

(OLSON2.OLSON) 07130
OLSON TWO DEPARTURE SL-1236 (FAA)

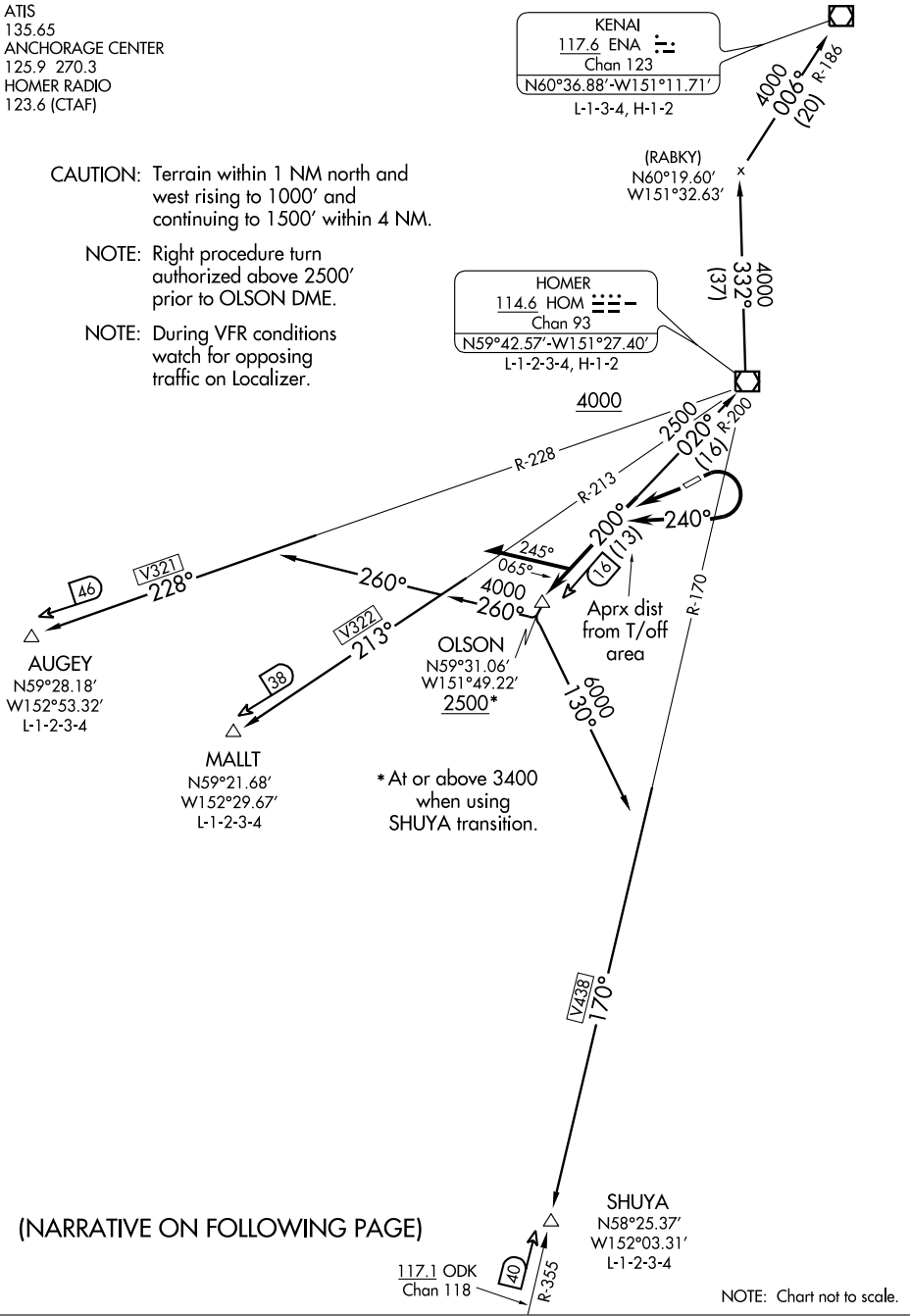
HOMER (HOM) (PAHO)
 HOMER, ALASKA

ATIS
 135.65
 ANCHORAGE CENTER
 125.9 270.3
 HOMER RADIO
 123.6 (CTAF)

CAUTION: Terrain within 1 NM north and west rising to 1000' and continuing to 1500' within 4 NM.

NOTE: Right procedure turn authorized above 2500' prior to OLSON DME.

NOTE: During VFR conditions watch for opposing traffic on Localizer.



AK, 22 OCT 2009 to 17 DEC 2009

AK, 22 OCT 2009 to 17 DEC 2009

(NARRATIVE ON FOLLOWING PAGE)

NOTE: Chart not to scale.

(OLSON2.OLSON) 07130
OLSON TWO DEPARTURE

HOMER, ALASKA
 HOMER (HOM) (PAHO)