

HOMER, ALASKA

AL-1236 (FAA)

# LOC/DME RWY 3 HOMER (HOM)(PAHO)

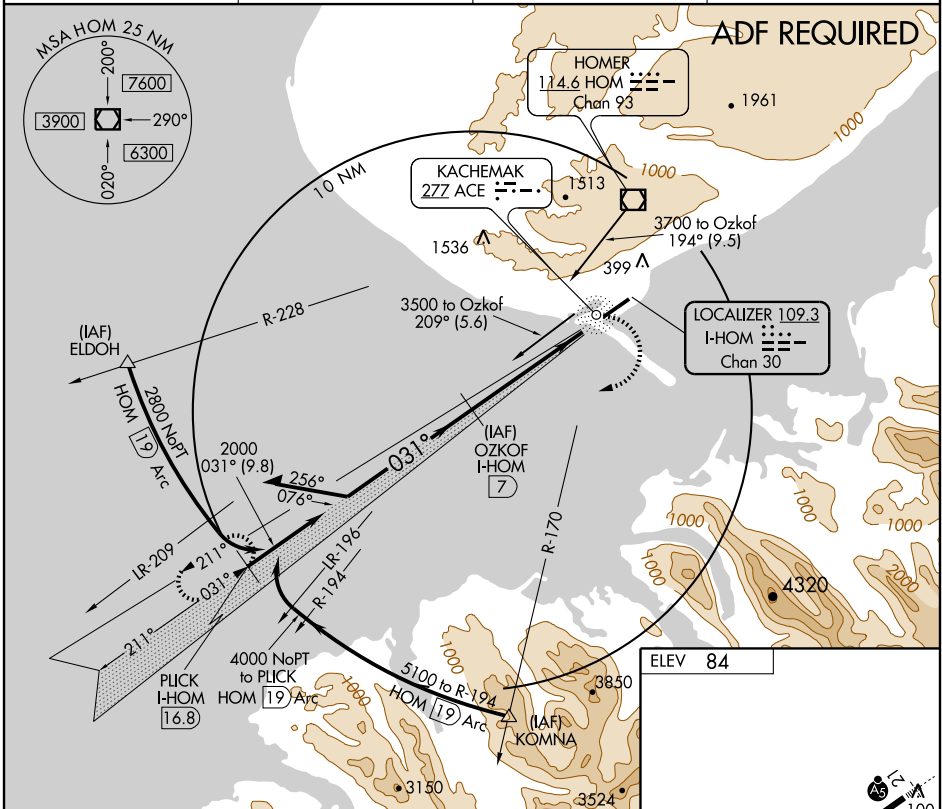
LOC/DME I-HOM <b>109.3</b> Chan <b>30</b>	APP CRS <b>031°</b>	Rwy Idg TDZE Apt Elev <b>6701</b> <b>78</b> <b>84</b>
-------------------------------------------------	------------------------	----------------------------------------------------------------------

**⚠** Circling not authorized northwest of Rwy 3-21. Inoperative table does not apply.

**MALSF**

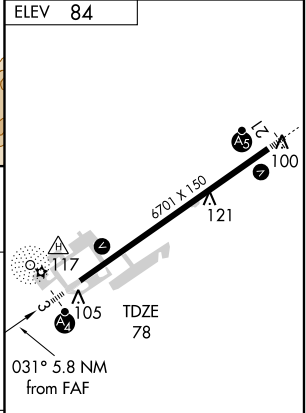
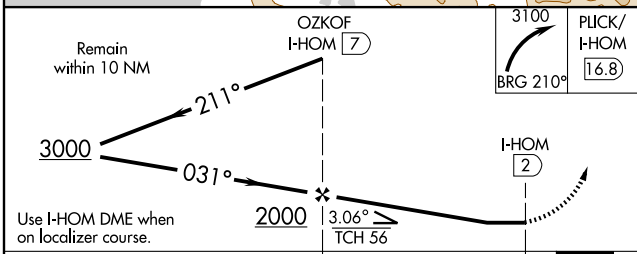
**MISSED APPROACH:** Climbing right turn to 3100 via 210° bearing from ACE NDB to PLICK/I-HOM 16.8 DME and hold.

ATIS <b>135.65</b>	ANCHORAGE CENTER <b>125.9 270.3</b>	HOMER RADIO <b>123.6</b> (CTAF)	UNICOM <b>122.7 123.0 123.05</b>
-----------------------	----------------------------------------	------------------------------------	-------------------------------------



AK, 22 OCT 2009 to 17 DEC 2009

AK, 22 OCT 2009 to 17 DEC 2009



CATEGORY	A	B	C	D
S-3		400-1	322 (400-1)	
CIRCLING	540-1	456 (500-1)	540-1½ 456 (500-1½)	640-2 556 (600-2)

HIRL Rwy 3-21					
Knots	60	90	120	150	180
Min:Sec					

HOMER, ALASKA  
Amdt 9B 07130

59° 39' N-151° 29' W

# HOMER (HOM)(PAHO) LOC/DME RWY 3