

KENAI, ALASKA

AL-1235 (FAA)

RNAV (GPS) RWY 1L

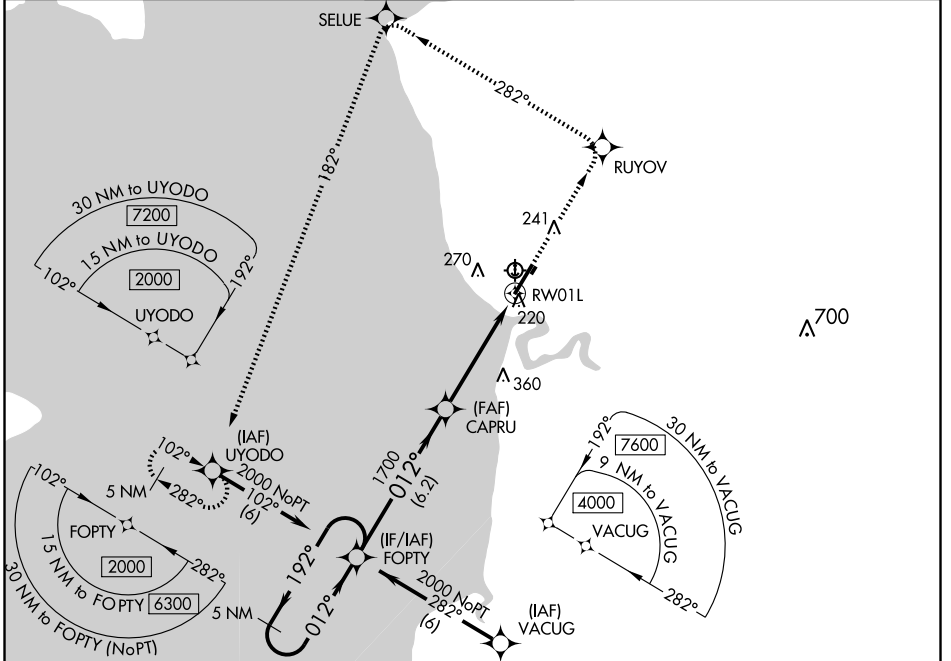
KENAI MUNI (ENA) (PAEN)

WAAS CH 69404 W01A	APP CRS 012°	Rwy Idg 7830 TDZE 94 Apt Elev 99
---------------------------------	------------------------	---

▼ BARO-VNAV NA when using Soldotna altimeter setting. For uncompensated BARO-VNAV systems, LNAV/VNAV NA below -25°C (-13°F) or above 48°C (118°F). DME/DME
 ▲ RNP-0.3 NA. Visibility reduction by helicopters NA. If local altimeter setting not received, use Soldotna altimeter setting and increase all DAs 22 feet and all MDAs 40 feet.

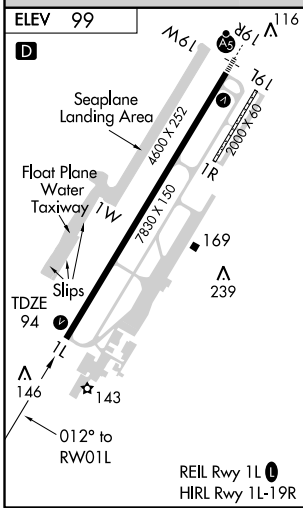
MISSED APPROACH: Climb to 2000 direct RUYOV and via 282° track to SELUE and left turn via 182° track to UYODO and hold.

ATIS 120.3	ANCHORAGE CENTER 125.7 379.1	KENAI TOWER* 121.3 (CTAF) 0 239.3	GND CON 121.9	KENAI RADIO 122.65
----------------------	--	---	-------------------------	------------------------------



AK, 22 OCT 2009 to 17 DEC 2009

AK, 22 OCT 2009 to 17 DEC 2009



5 NM Holding Pattern 2000 RUYOV SELUE UYODO	2000 ←192° 012° → 012° CAPRU RWY 1L	6.2 NM 4.8 NM	2000 RUYOV SELUE UYODO	
			GS 3.00° TCH 52	
CATEGORY LPV DA LNAV/VNAV DA LNAV MDA CIRCLING	A 360-1 481-1¼ 500-1 560-1 461 (500-1)	B 266 (300-1) 387 (400-1¼) 406 (500-1) 580-1 481 (500-1)	C 387 (400-1¼) 500-1¼ 406 (500-1¼) 580-1½ 481 (500-1½)	D 660-2 561 (600-2)

KENAI, ALASKA
Amdt 1A 09071

60° 34' N-151° 15' W

KENAI MUNI (ENA) (PAEN) RNAV (GPS) RWY 1L