

RNAV (GPS) RWY 19R

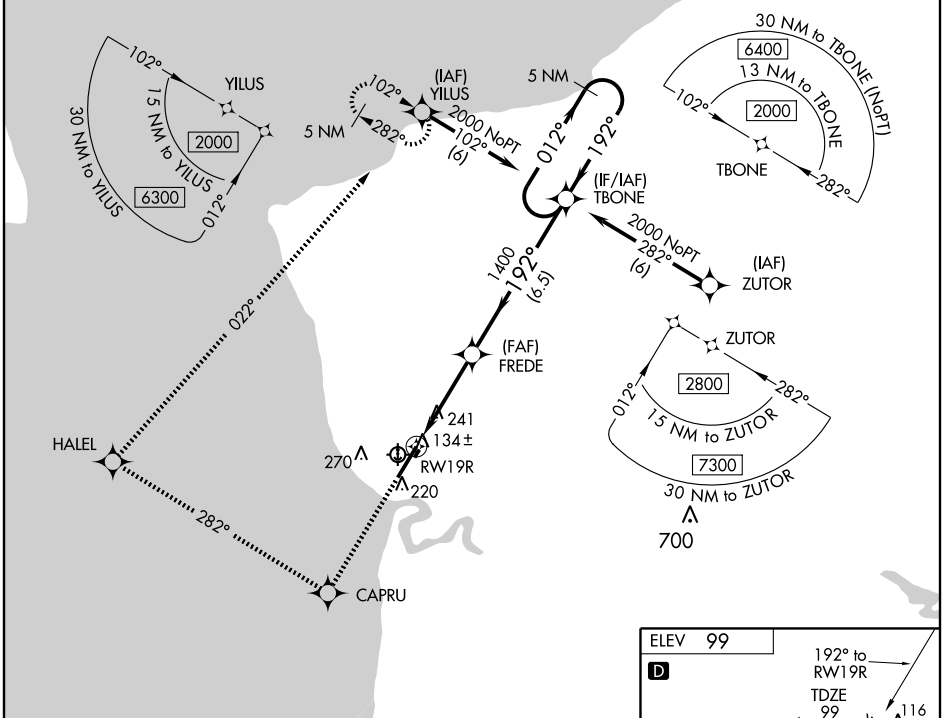
KENAI MUNI (ENA) (PAEN)

WAAS CH 99504 W19A	APP CRS 192°	Rwy Idg 7830 TDZE 99 Apt Elev 99
--	------------------------	---

⚠ For inoperative MALSRL increase LNAV/VNAV visibility to RVR 5000, and LNAV Cat D visibility to RVR 6000. BARO-VNAV NA when using Soldotna altimeter setting. For uncompensated BARO-VNAV systems, LNAV/VNAV NA below -25°C (-13°F) or above 48°C (118°F). DMÉ/DME RNP-0.3 NA. VDP NA when using Soldotna altimeter setting. If local altimeter setting not received, use Soldotna altimeter setting and increase all DAs 22 feet and all MDAs 40 feet.

MALSRL MISSED APPROACH: Climb to 2000 direct CAPRU, and via 282° track to HALEL, and right turn VIA 022° track to YILUS and hold.

ATIS 120.3	ANCHORAGE CENTER 125.7 379.1	KENAI TOWER* 121.3 (CTAF) 0 239.3	GND CON 121.9	KENAI RADIO 122.65
----------------------	--	---	-------------------------	------------------------------



AK, 22 OCT 2009 to 17 DEC 2009

AK, 22 OCT 2009 to 17 DEC 2009

2000	CAPRU	HALEL	YILUS	5 NM Holding Pattern
↑	282° TRK	022° TRK		
*LNAV only				
CATEGORY	A	B	C	D
LPV DA	349/24 250 (300-½)			
LNAV/VNAV DA	384/24 285 (300-½)		384/40 285 (300-¾)	
LNAV MDA	520/24	421 (500-½)	520/40 421 (500-¾)	520/50 421 (500-1)
CIRCLING	560-1 461 (500-1)	580-1 481 (500-1)	580-1½ 481 (500-½)	660-2 561 (600-2)

