

RNAV (GPS) X RWY 1L

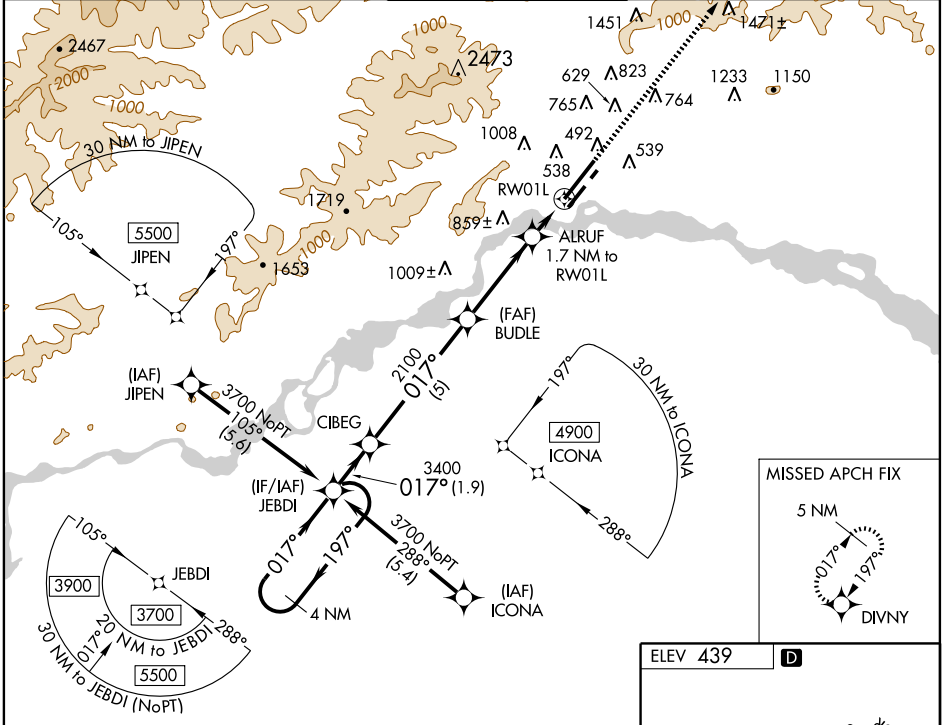
FAIRBANKS INTL (FAI) (PAFA)

APP CRS	Rwy Idg	10700
017°	TDZE	438
	Apt Elev	439

▼ Inoperative table does not apply to Cat C with LNAV MDA 860. Circling NA west of Rwy 1L-19R. DME/DME RNP-0.3 NA *Missed approach obstructions require a minimum climb of 205 feet per NM to 2300.

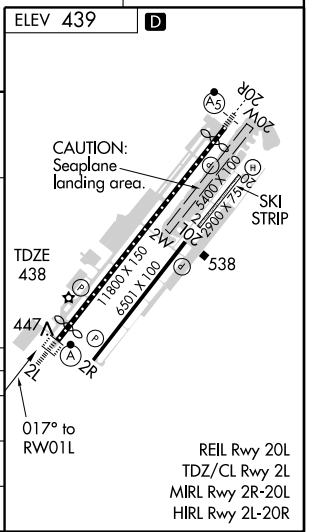
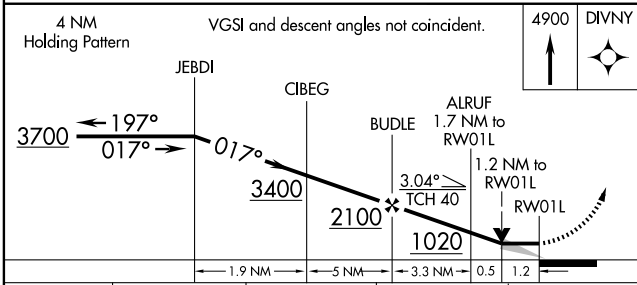
MALS MISSED APPROACH: Climb to 4900 direct DIVNY and hold. Continue climb-in-hold to 4900.

ATIS	FAIRBANKS APP CON *	FAIRBANKS TOWER *	GND CON	CLNC DEL
124.4	125.35 363.2	118.3 257.8	121.9	127.6



AK, 22 OCT 2009 to 17 DEC 2009

AK, 22 OCT 2009 to 17 DEC 2009



CATEGORY	A	B	C	D
LNAV MDA*	820- $\frac{3}{4}$ 382 (400- $\frac{3}{4}$)			820-1 $\frac{1}{4}$ 382 (400- $\frac{1}{4}$)
LNAV MDA	860- $\frac{3}{4}$	422 (500- $\frac{3}{4}$)	860-1 $\frac{1}{4}$	422 (500- $\frac{1}{4}$)
CIRCLING	860-1 421 (500-1)	900-1 461 (500-1)	900-1 $\frac{1}{2}$ 461 (500- $\frac{1}{2}$)	1000-2 561 (600-2)