

ANIAK, ALASKA

AL-1233 (FAA)

NDB ANI 359	APP CRS 273°	Rwy Idg TDZE Apt Elev	6000 88 88
-----------------------	------------------------	-----------------------------	---------------------------------------

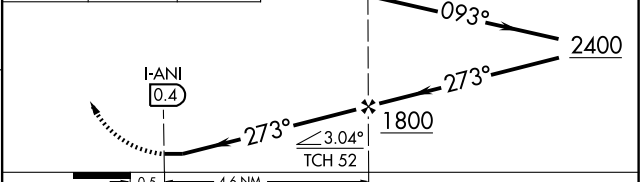
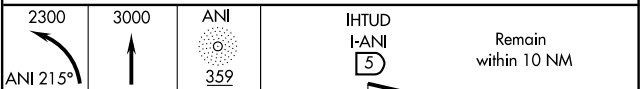
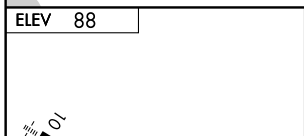
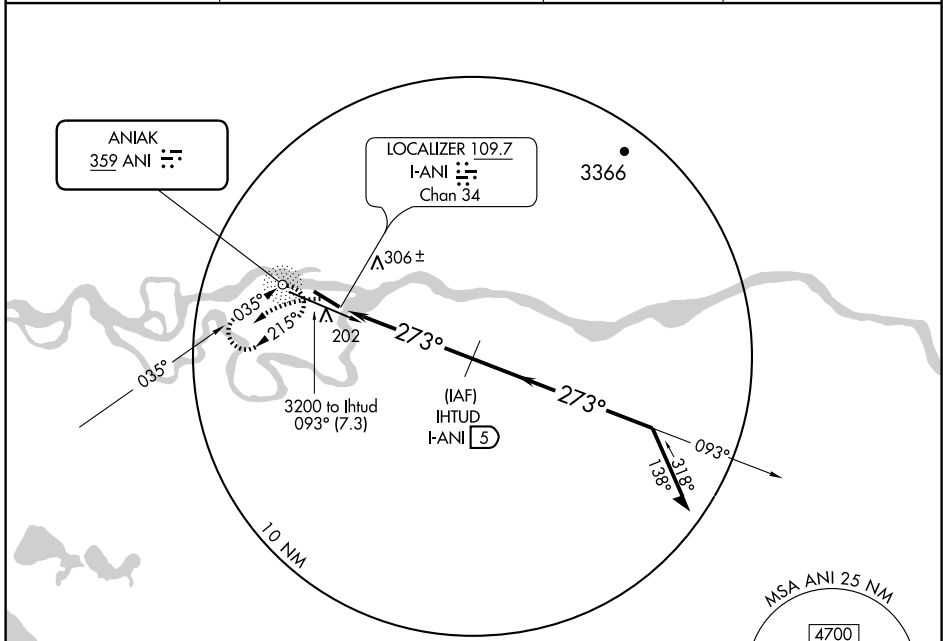
NDB/DME RWY 28

ANIAK (ANI)(PANI)

▼ Simultaneous reception of ANI and I-ANI DME required. DME from I-ANI LOC/DME.
Circling not authorized North of Runway 10-28.

MISSED APPROACH: Climbing left turn to 2300 on 215° bearing from ANI then direct ANI NDB climbing to 3000 and hold.

AWOS-3 124.3	ANCHORAGE CENTER 118.15 251.05	CLNC DEL 118.15	CTAF 122.10
------------------------	--	---------------------------	-----------------------



CATEGORY	A	B	C	D
S-28	620-1	532 (600-1)	620-1½ 532 (600-1½)	620-1¾ 532 (600-1¾)
CIRCLING	620-1	532 (600-1)	620-1½ 532 (600-1½)	640-2 552 (600-2)

ANIAK, ALASKA
Amdt 3 09183

61°35'N-159°33'W

ANIAK (ANI)(PANI) NDB/DME RWY 28

AK, 22 OCT 2009 to 17 DEC 2009

AK, 22 OCT 2009 to 17 DEC 2009