

ANIAK, ALASKA

AL-1233 (FAA)

LOC/DME I-ANI 109.7 Chan 34	APP CRS 103°	Rwy Idg 6000 TDZE 88 Apt Elev 88
---	------------------------	---

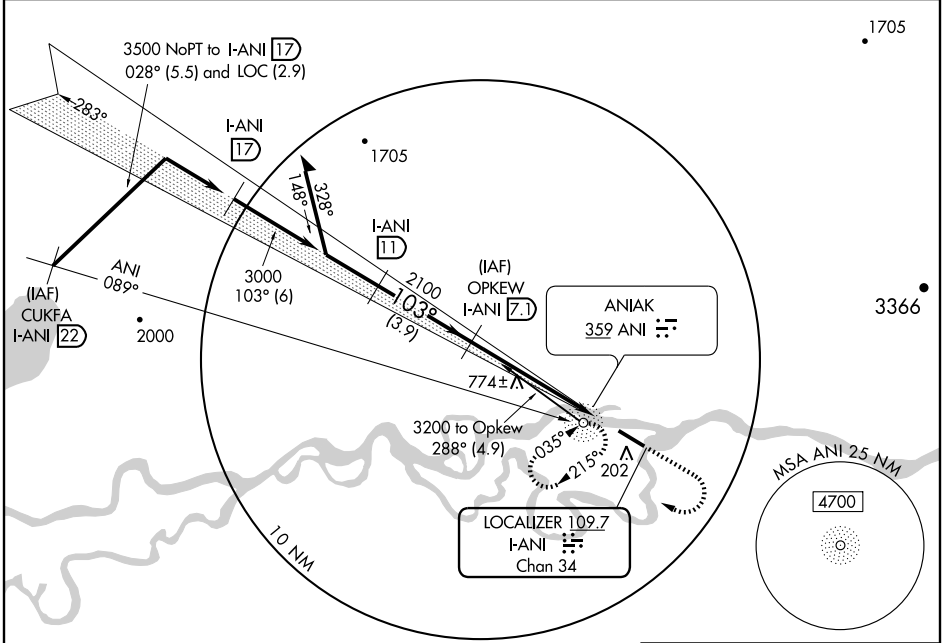
ILS/DME RWY 10
ANIAK (ANI)(PANI)

⚠ Circling not authorized north of Runway 10-28. Circling requires descent on glide slope to MDA. Localizer unusable from I-ANI 1.7 DME inbound.

MALSF

MISSED APPROACH: Climb to 3200 then climbing right turn to 3200 direct ANI NDB and hold.

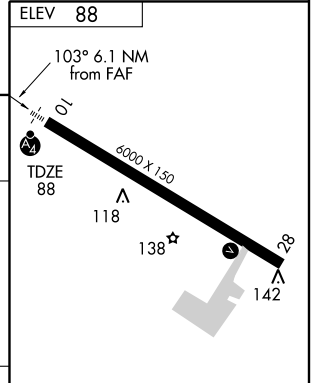
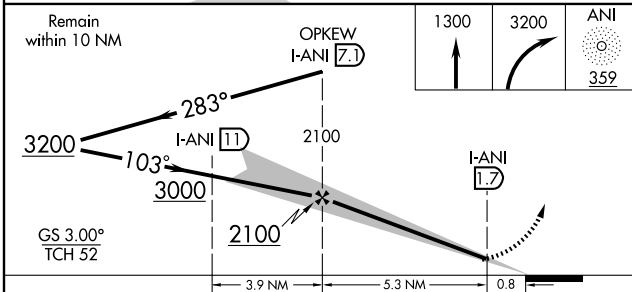
AWOS-3 124.3	ANCHORAGE CENTER 118.15 251.05	CLNC DEL 118.15	CTAF 122.1
------------------------	--	---------------------------	----------------------



AK, 22 OCT 2009 to 17 DEC 2009

AK, 22 OCT 2009 to 17 DEC 2009

ADF and DME REQUIRED



CATEGORY	A	B	C	D
S-ILS 10	338-¾ 250 (300-¾)			
S-LOC 10	NA			
CIRCLING	580-1	492 (500-1)	580-1½ 492 (500-1½)	640-2 552 (600-2)

HIRL Rwy 10-28					
Knots	60	90	120	150	180
Min:Sec					

ANIAK, ALASKA
Amdt 7C 07074

61° 35' N-159° 33' W

ILS/DME RWY 10
ANIAK (ANI)(PANI)