

NOME, ALASKA

AL-1231 (FAA)

NDB/DME OYN <b>208</b>	APP CRS <b>035°</b>	Rwy Idg TDZE Apt Elev	<b>5576</b> <b>24</b> <b>37</b>
Chan <b>85 (113.8)</b>			

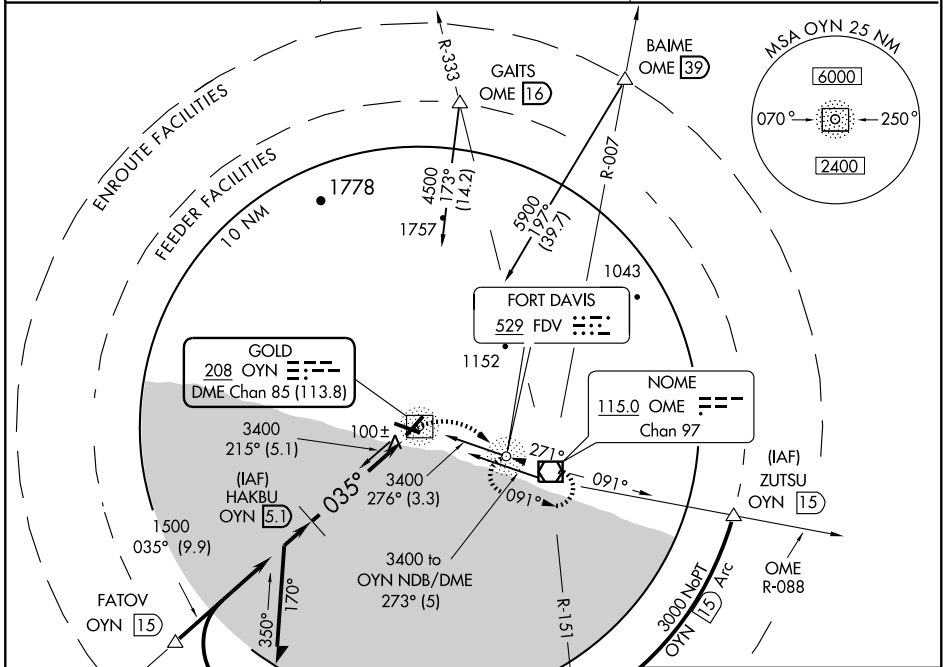
# NDB/DME RWY 3

NOME (OME)(PAOM)

**▼**  
**▲**

MISSED APPROACH: Climbing right turn to 3000 direct FDV NDB and hold.

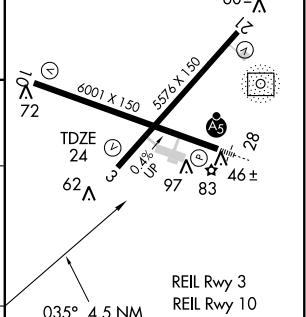
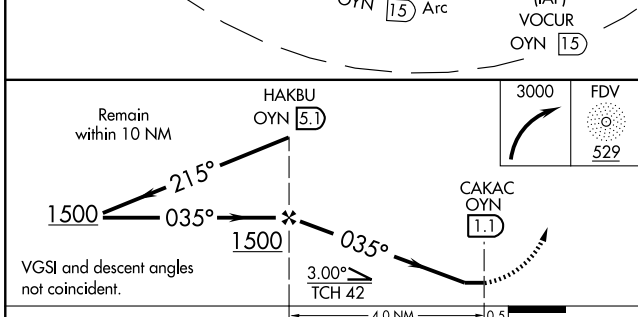
ATIS <b>119.925</b>	ANCHORAGE CENTER <b>133.3 290.4</b>	NOME RADIO <b>123.6 (CTAF) 0255.4</b>
------------------------	--	--



AK, 22 OCT 2009 to 17 DEC 2009

AK, 22 OCT 2009 to 17 DEC 2009

ELEV 37
---------



CATEGORY	A	B	C	D	Knots	60	90	120	150	180
S-3	460-1	436 (500-1)	460-1¼ 436 (500-1¼)	460-1½ 436 (500-1½)	Min:Sec					
CIRCLING	520-1	483 (500-1)	580-1½ 543 (600-1½)	800-2½ 763 (800-2½)						

NOME, ALASKA  
Amdt 2 07130

64° 31' N-165° 27' W

# NOME (OME)(PAOM)

## NDB/DME RWY 3