

GALENA, ALASKA

AL-1229 (FAA)

# VOR RWY 25

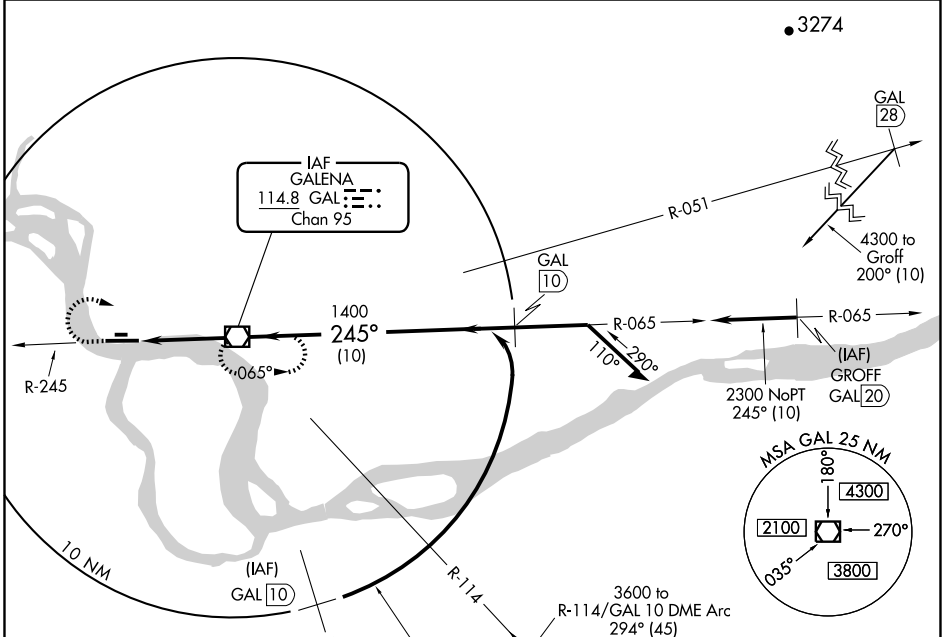
GALENA/EDWARD G. PITKA SR (GAL)(PAGA)

VORTAC GAL <b>114.8</b> Chan <b>95</b>	APP CRS <b>245°</b>	Rwy Idg TDZE <b>152</b> Apt Elev <b>152</b>	<b>7249</b>
--	------------------------	---	-------------

Inoperative table does not apply.

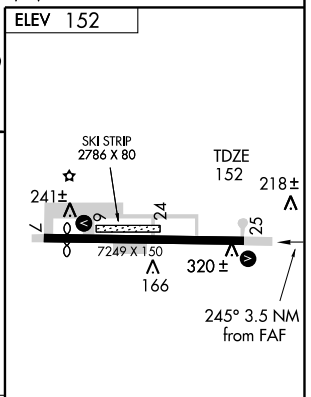
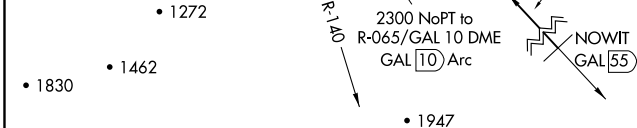
MISSED APPROACH: Climb to 1500 on GAL R-245, then climbing right turn to 3000 direct to GAL VOR/DME and hold.

AWOS-3 <b>132.525</b>	ANCHORAGE CENTER <b>127.0 290.2</b>	FAIRBANKS RADIO <b>122.2</b>	CTAF <b>123.0</b>
--------------------------	--	---------------------------------	----------------------



AK, 22 OCT 2009 to 17 DEC 2009

AK, 22 OCT 2009 to 17 DEC 2009



CATEGORY	A	B	C	D	E
S-25	560-1 408 (500-1)		560-1¼ 408 (500-1¼)		NA
CIRCLING	620-1 468 (500-1)		620-1½ 468 (500-1½)	720-2 568 (600-2)	

REIL Rwy 7	
HIRL Rwy 7-25	
FAF to MAP 3.5 NM	
Knots	60 90 120 150 180
Min:Sec	3:30 2:20 1:45 1:24 1:10

GALENA, ALASKA  
Amdt 9E 09183

GALENA/EDWARD G. PITKA SR (GAL)(PAGA)

64°44'N-156°56'W

# VOR RWY 25