

WAAS CH 86907 W07A	APP CRS 066°	Rwy ldg 6648 TDZE 150 Apt Elev 153
--	------------------------	---

RNAV (GPS) RWY 7

GALENA/EDWARD G. PITKA SR (GAL)(PAGA)

⚠ For uncompensated Baro-VNAV systems, LNAV/VNAV NA below -25°C (-13°F) or above 48°C (118°F). DME/DME RNP-0.3 NA. Visibility reduction by helicopters NA. Baro-VNAV NA when using Ruby altimeter setting. When local altimeter setting not received, use Ruby altimeter setting and increase all DA/MDA 160 feet and all visibilities ¾ mile.

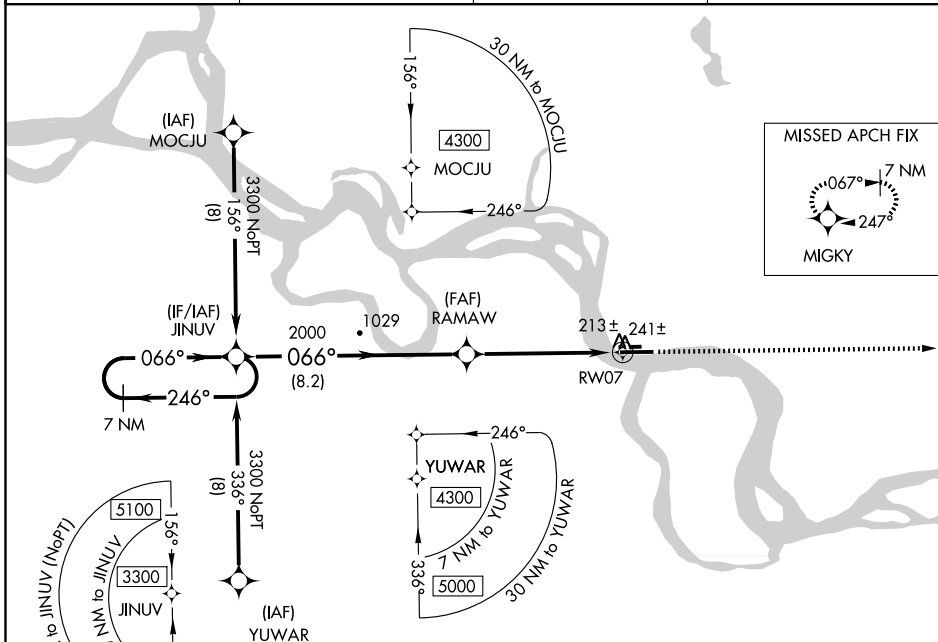
MISSED APPROACH:
Climb to 5000 direct MIGKY and hold, continue climb-in-hold to 5000.

AWOS-3
132.525

ANCHORAGE CENTER
127.0 290.2

FAIRBANKS RADIO
122.2

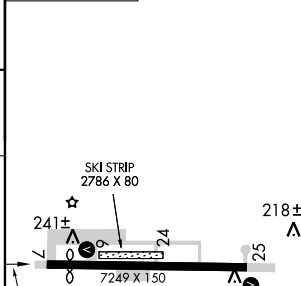
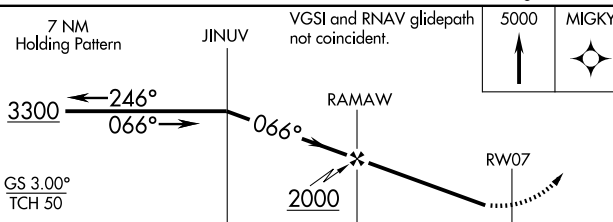
CTAF
123.0



AK, 22 OCT 2009 to 17 DEC 2009

AK, 22 OCT 2009 to 17 DEC 2009

ELEV 153



CATEGORY	A	B	C	D	E
LPV DA	403-1		253 (300-1)		
LNAV/VNAV DA	473-1		323 (400-1)		473-1¼ 323 (400-1¼)
LNAV MDA	500-1 350 (400-1)		500-1¼ 350 (400-1¼)		
CIRCLING	620-1 467 (500-1)		620-1½ 467 (500-1½)		720-2 567 (600-2)

066° to RW07

REIL Rwy 7 **0**
HIRL Rwy 7-25 **0**