

RNAV (GPS) RWY 25

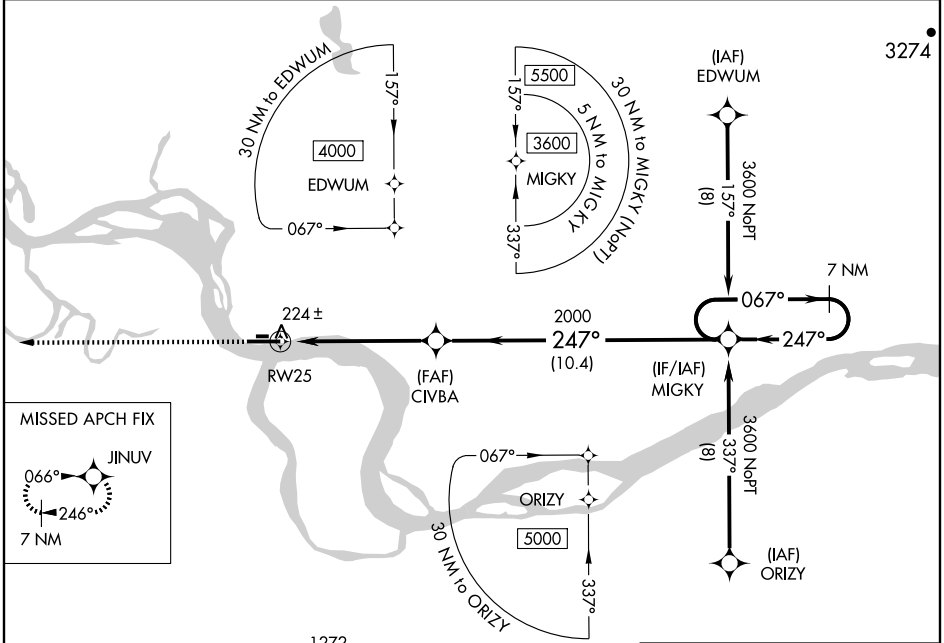
GALENA/EDWARD G. PITKA SR (GAL)(PAGA)

WAAS CH 77707 W25A	APP CRS 247°	Rwy ldg 7249 TDZE 153 Apt Elev 153
--	------------------------	---

⚠ For uncompensated Baro-VNAV systems, LNAV/VNAV NA below -25°C (-13°F) or above 48°C (118°F). DME/DME RNP-0.3 NA. Visibility reduction by helicopters NA.
⚠ Baro-VNAV NA when using Ruby altimeter setting. When local altimeter setting not received, use Ruby altimeter setting and increase all DA/MDA 160 feet and all visibilities ½ mile. Inoperative table does not apply.

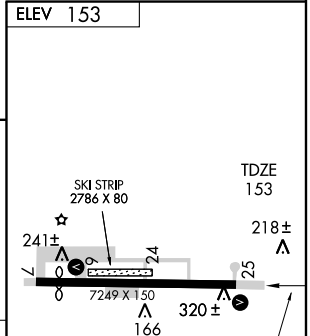
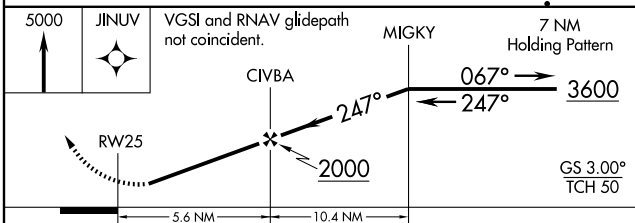
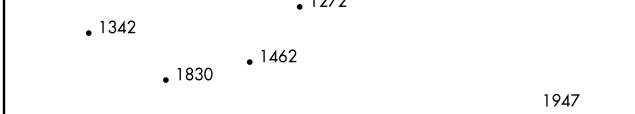
MISSED APPROACH:
Climb to 5000 direct JINUV and hold, continue climb-in-hold 5000.

AWOS-3 132.525	ANCHORAGE CENTER 127.0 290.2	FAIRBANKS RADIO 122.2	CTAF 123.0
--------------------------	--	---------------------------------	----------------------



AK, 22 OCT 2009 to 17 DEC 2009

AK, 22 OCT 2009 to 17 DEC 2009



CATEGORY	A	B	C	D	E
LPV DA	424-1 271 (300-1)				
LNAV/VNAV DA	502-1¼ 349 (400-1¼)				
LNAV MDA	580-1 427 (500-1)	580-1¼ 427 (500-1¼)	580-1½ 427 (500-1½)		
CIRCLING	620-1 467 (500-1)	620-1½ 467 (500-1½)	720-2 567 (600-2)		

REIL Rwy 7 **0**
HIRL Rwy 7-25 **0**

RNAV (GPS) RWY 25