

GALENA, ALASKA

# HI-VOR/DME or TACAN RWY 25

VORTAC GAL 114.8 Chan 95	APCH CRS 245°	Rwy ldg 7200 TDZE 152 Arpt Elev 152
--------------------------------	------------------	--

JAL-1229 [USAF]

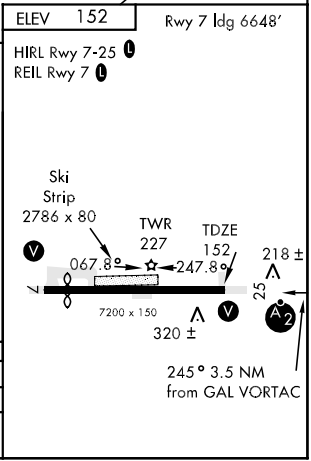
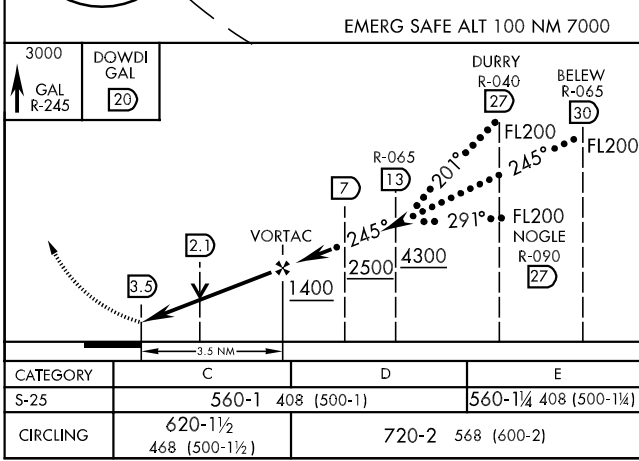
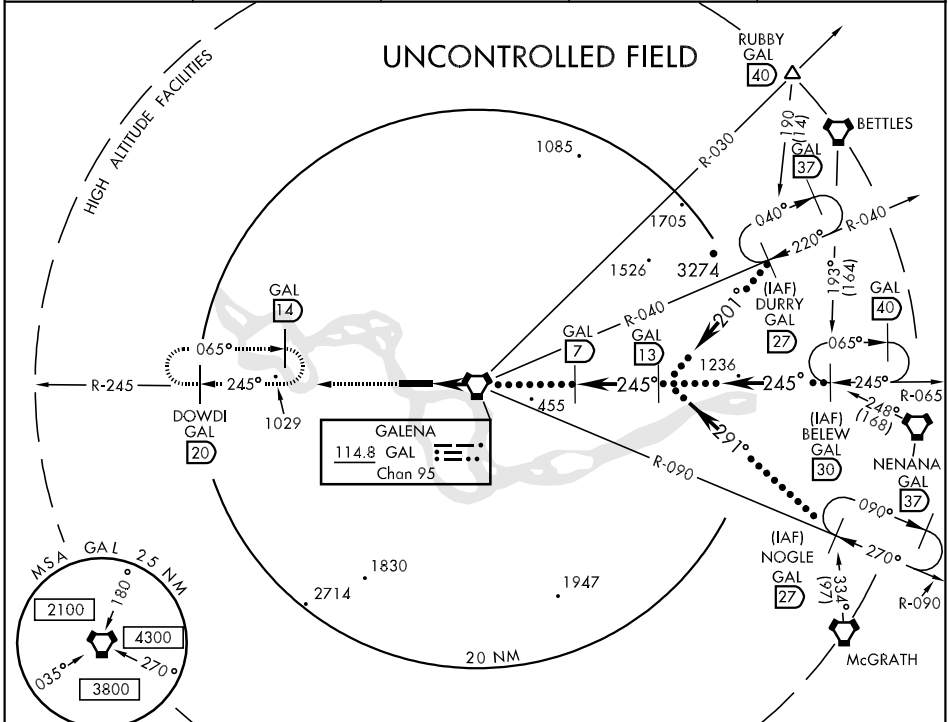
GALENA/EDWARD G. PITKA SR (PAGA)

Cat D and E S-25 visibility increased to 1¼ miles for inoperative ALSF-1.  
CAUTION: Numerous opposite direction operations.



MISSED APPROACH: At 3.5 DME, climb to 3000 via GAL R-245 to DOWDI 20 DME and hold.

ANCHORAGE CENTER 127.0 290.2	CTAF 0 * 123.0 352.05	FAIRBANKS RADIO 122.2	MILITARY CONTACT "GALENA OPERATIONS" 391.2	AWOS-3 132.525
---------------------------------	--------------------------	--------------------------	--	-------------------



GALENA, ALASKA  
Amdt 1 08269

64°44'N-156°56'W

GALENA/EDWARD G. PITKA SR (PAGA)

# HI-VOR/DME or TACAN RWY 25

AK, 22 OCT 2009 to 17 DEC 2009

AK, 22 OCT 2009 to 17 DEC 2009