

MCGRATH, ALASKA

AL-1225 (FAA)

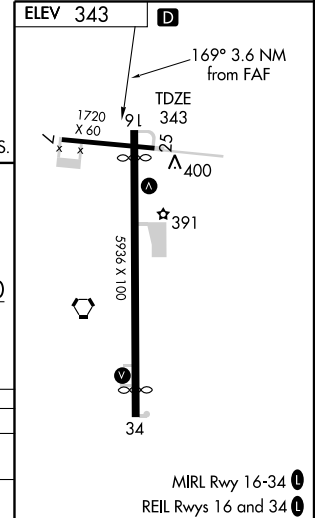
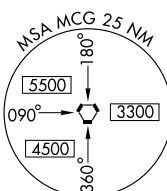
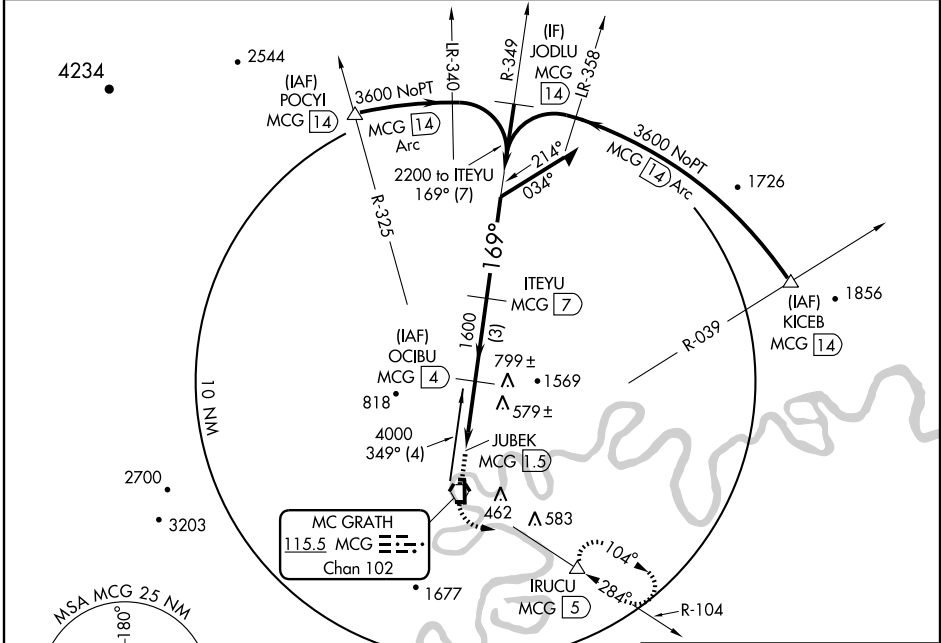
VOR/DME or TACAN RWY 16

MC GRATH (MCG)(PAMC)

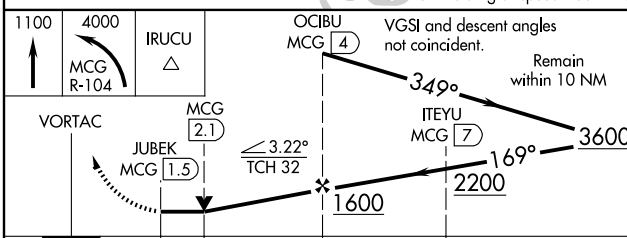
VORTAC MCG 115.5 Chan 102	APP CRS 169°	Rwy Idg TDZE Apt Elev	5390 343 343
---	------------------------	-----------------------------	---

MISSED APPROACH: Climb to 1100 then climbing left turn to 4000 via MCG VORTAC R-104 to IRUCU/5 DME and hold, continue climb in hold to 4000.

ASOS 135.65	ANCHORAGE CENTER 128.1 353.8	MCGRATH RADIO 123.6 (CTAF) 0
-----------------------	--	---



Maximum holding airspeed 230 KIAS.



CATEGORY	A	B	C	D
S-16	900-1¼ 557 (600-1¼)		900-1½ 557 (600-1½)	900-1¾ 557 (600-1¾)
CIRCLING	900-1¼ 557 (600-1¼)		900-1½ 557 (600-1½)	1180-2¾ 837 (900-2¾)

AK, 22 OCT 2009 to 17 DEC 2009

AK, 22 OCT 2009 to 17 DEC 2009