

MCGRATH, ALASKA

AL-1225 (FAA)

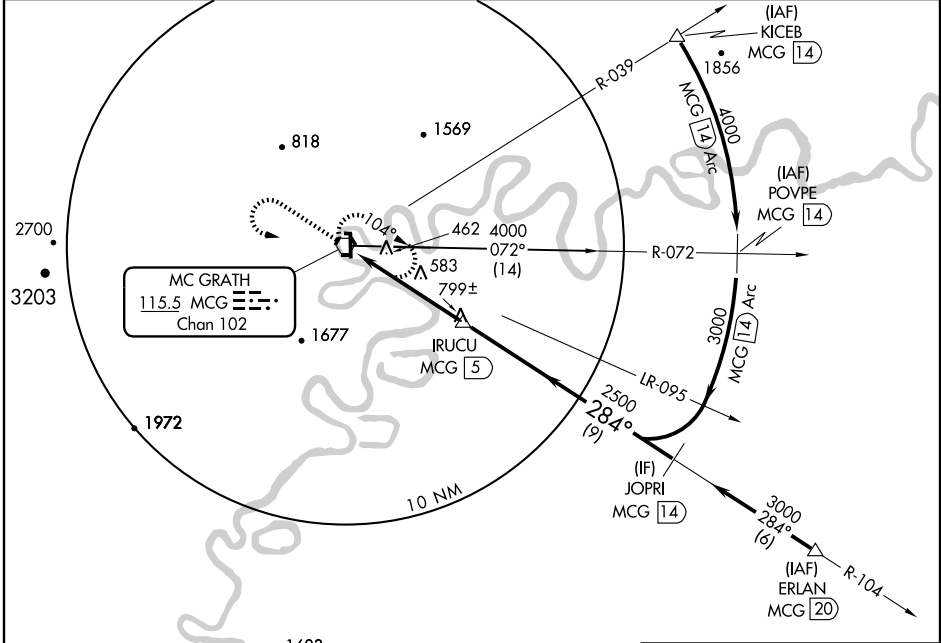
VORTAC MCG <b>115.5</b> Chan <b>102</b>	APP CRS <b>284°</b>	Rwy Idg TDZE Apt Elev <b>N/A</b> <b>N/A</b> <b>343</b>
---	------------------------	---

# VOR/DME-C

MC GRATH (MCG)(PAMC)

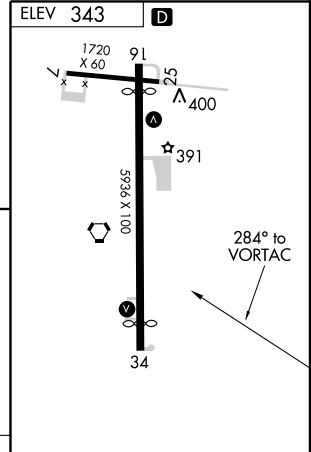
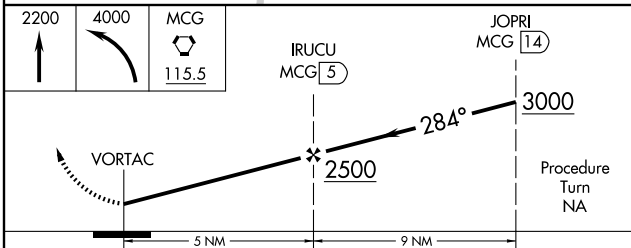
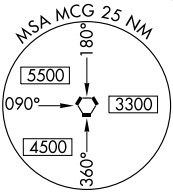
**▲**  
**▲** MISSED APPROACH: Climb to 2200, then climbing left turn to 4000 direct MCG VORTAC and hold, continue climb in hold to 4000.

ASOS <b>135.65</b>	ANCHORAGE CENTER <b>128.1 353.8</b>	MCGRATH RADIO <b>123.6 (CTAF) 0</b>
-----------------------	--	--



AK, 22 OCT 2009 to 17 DEC 2009

AK, 22 OCT 2009 to 17 DEC 2009



CATEGORY	A	B	C	D
CIRCLING	1060-1 717 (800-1)	1060-2 717 (800-2)	1180-2 837 (900-2 3/4)	

MIRL Rwy 16-34  
REIL Rwy 16 and 34

MCGRATH, ALASKA  
Amdt 1 09183

62° 57' N-155° 36' W

# MC GRATH (MCG)(PAMC)

## VOR/DME-C