

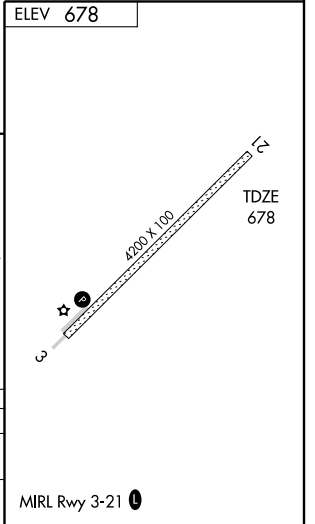
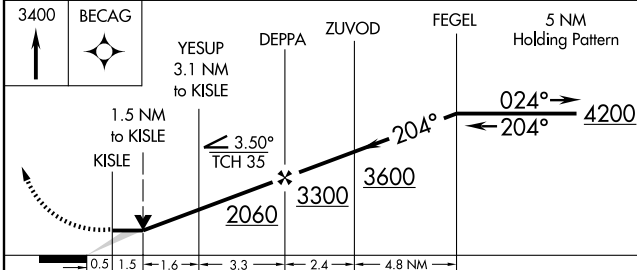
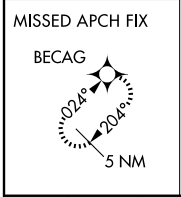
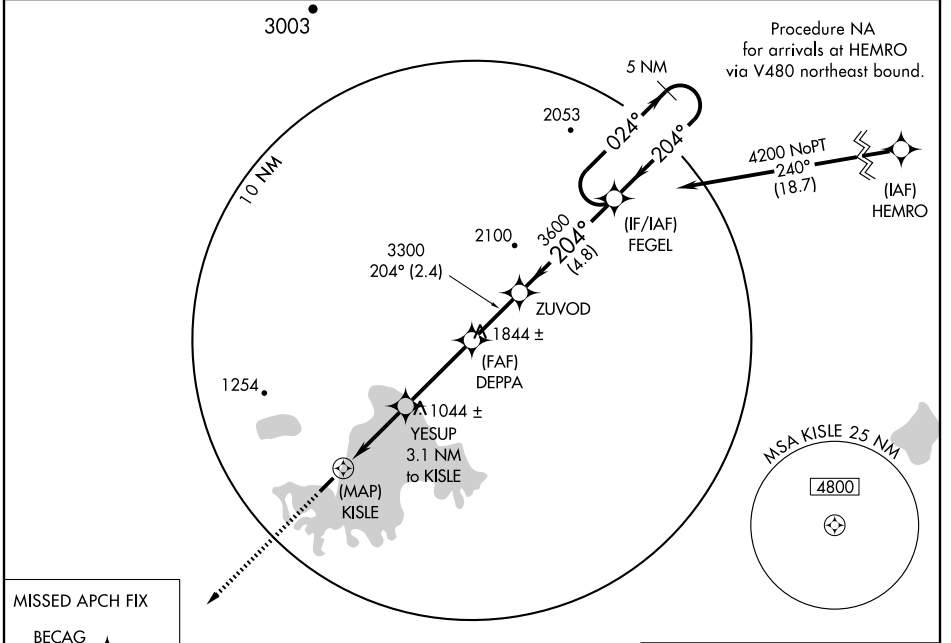
RNAV (GPS) RWY 21

MINCHUMINA (MHM) (PAMH)

APP CRS 204°	Rwy Idg 4200
	TDZE 678
	Apt Elev 678

DME/DME RNP-0.3 NA. Circling NA west of Rwy 3-21. MISSED APPROACH: Climb to 3400 direct BECAG and hold.

AWOS-3 135.55	ANCHORAGE CENTER 120.9 319.2	FAIRBANKS RADIO 122.2	CTAF 122.9
-------------------------	--	---------------------------------	----------------------



CATEGORY	A	B	C	D
RNAV MDA	1460-1 782 (800-1)	1460-1½ 782 (800-1¼)	1460-2¼ 782 (800-2¼)	1460-2½ 782 (800-2½)
CIRCLING	1460-1 782 (800-1)	1460-1½ 782 (800-1¼)	1460-2¼ 782 (800-2¼)	1460-2½ 782 (800-2½)

AK, 22 OCT 2009 to 17 DEC 2009

AK, 22 OCT 2009 to 17 DEC 2009