

APP CRS 038°	Rwy Idg 4600
	TDZE 368
	Apt Elev 368

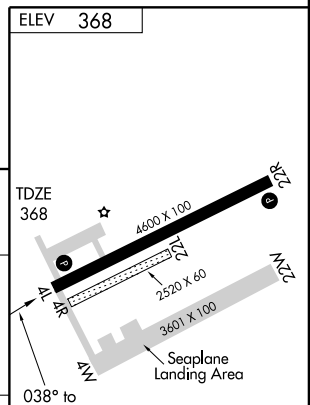
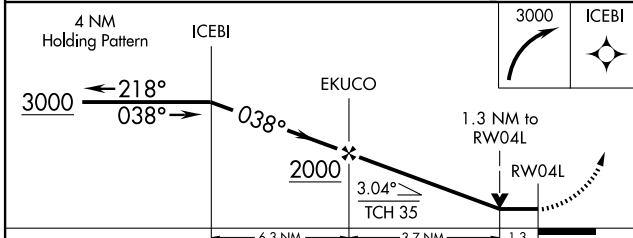
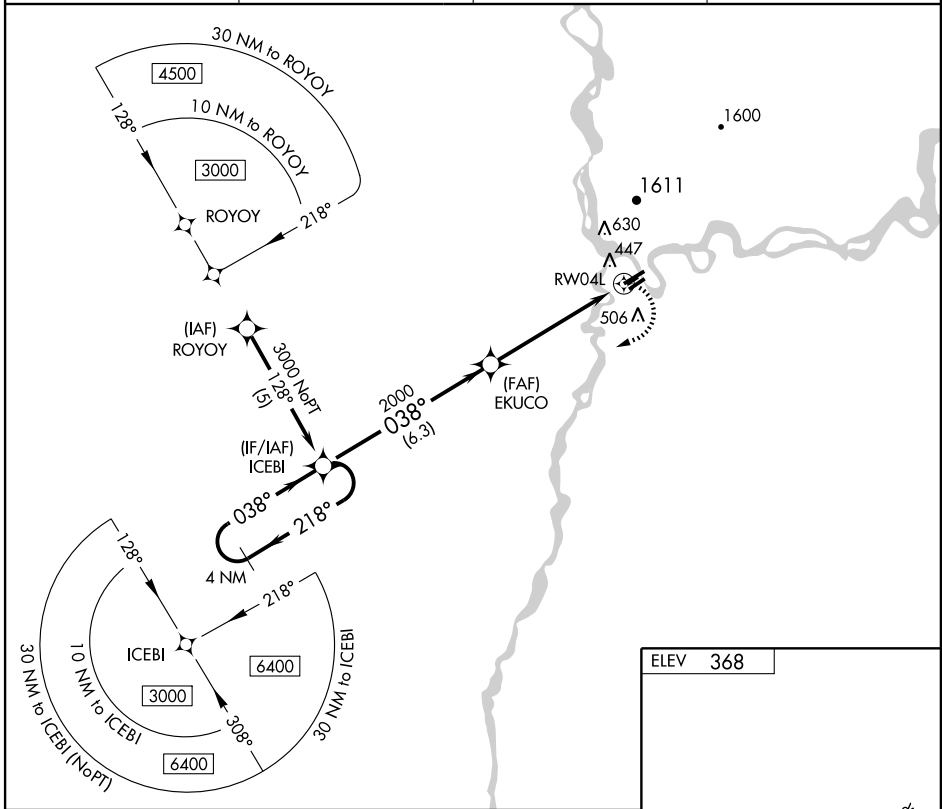
RNAV (GPS) RWY 4L

NENANA MUNI (ENN) (PANN)

⚠ Circling NA west of Rwy 4L-22R. DME/DME RNP-0.3 NA.
⚠ Visibility reduction by helicopters NA. When local altimeter setting not received, use Fairbanks Intl altimeter setting; increase all MDA 100 feet and LNAV visibility Cat. C/D ¼ mile.

MISSED APPROACH: Climbing right turn to 3000 direct ICEBI and hold.

ASOS 125.2	FAIRBANKS APP CON 125.35 363.2 (180°-359°)	FAIRBANKS RADIO 122.5	CTAF 122.1
----------------------	------------------------------------------------------	---------------------------------	----------------------



CATEGORY	A	B	C	D
LNAV MDA	800-1	432 (500-1)	800-1½ 432 (500-1½)	800-1½ 432 (500-1½)
CIRCLING	860-1	492 (500-1)	860-1½ 492 (500-1½)	920-2 552 (600-2)

MIRL Rwy 4L-22R
 REIL Rwys 4L and 22R
 MIRL Rwy 4R-22L

AK, 22 OCT 2009 to 17 DEC 2009

AK, 22 OCT 2009 to 17 DEC 2009