

GULKANA, ALASKA

AL-1220 (FAA)

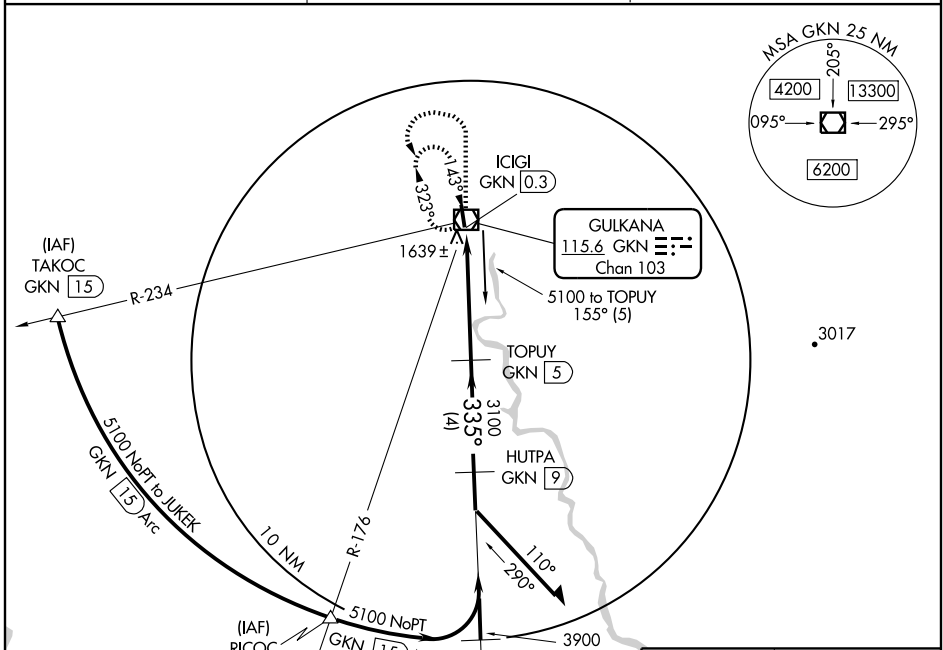
VOR/DME RWY 33

GULKANA (GKN) (PAGK)

VOR/DME GKN 115.6 Chan 103	APP CRS 335°	Rwy Ldg TDZE 1566 Apt Elev 1580
--	------------------------	---

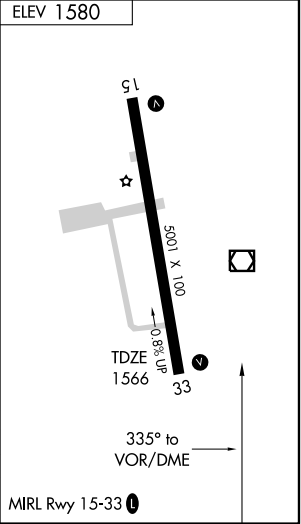
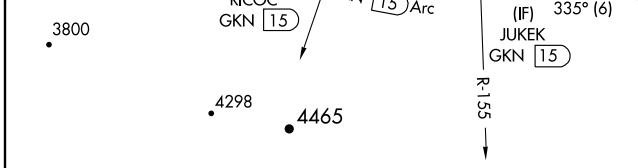
MISSED APPROACH: Climb to 2800 then climbing left turn to 4000 direct GULKANA VOR/DME and hold, continue climb-in-hold to 4000.

ASOS 134.85	ANCHORAGE CENTER 119.5 317.5	CTAF 122.9 0
-----------------------	--	------------------------



AK, 22 OCT 2009 to 17 DEC 2009

AK, 22 OCT 2009 to 17 DEC 2009



2800	4000	GKN 115.6	TOPUY GKN 5	Remain within 10 NM

CATEGORY	A	B	C	D
S-33	1900-1 334 (400-1)			
CIRCLING	2000-1 420 (500-1)	2040-1 460 (500-1)	2040-1½ 460 (500-1½)	2140-2 560 (600-2)

GULKANA, ALASKA
Orig 09183

62°09'N-145°27'W

GULKANA (GKN) (PAGK) VOR/DME RWY 33