

GULKANA, ALASKA

AL-1220 (FAA)

# RNAV (GPS) RWY 33

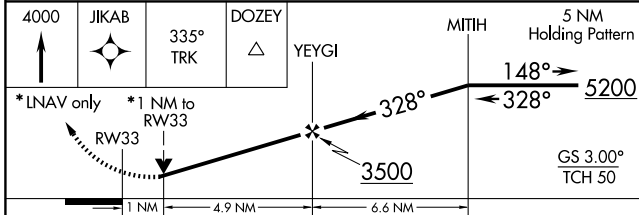
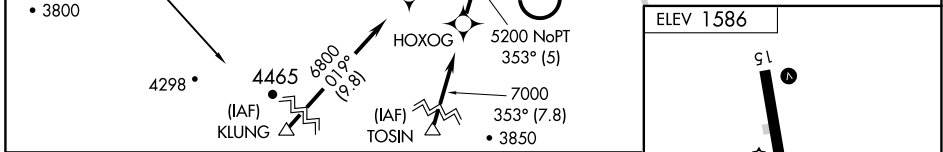
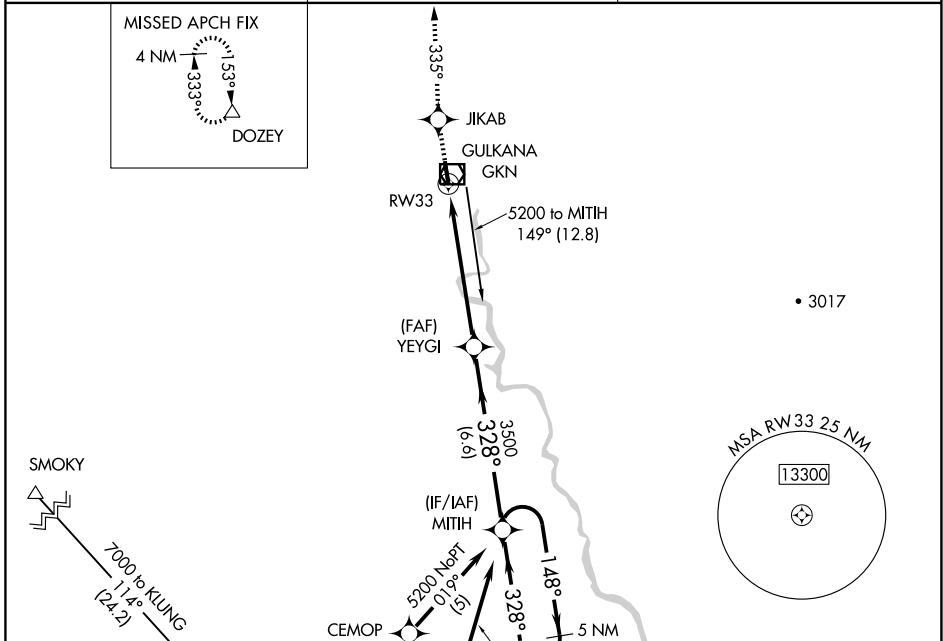
GULKANA (GKN) (PAGK)

WAAS CH <b>42507</b> <b>W33A</b>	APP CRS <b>328°</b>	Rwy Idg TDZE Apt Elev	<b>5001</b> <b>1573</b> <b>1586</b>
--	------------------------	-----------------------------	---

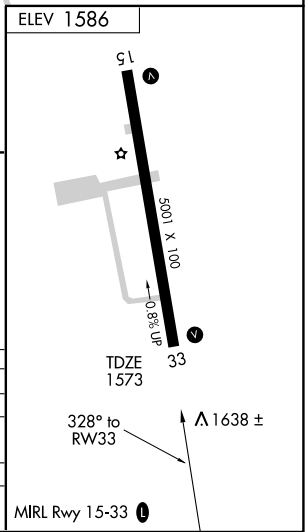
**⚠** For uncompensated Baro-VNAV systems, LNAV/VNAV NA below -28°C (-18°F) or above 46°C (114°F). DME/DME RNP- 0.3 NA. Visibility reduction by helicopters NA. When local altimeter setting not received, procedure NA.

**MISSED APPROACH:** Climb to 4000 direct JIKAB and via 335° track to DOZEY and hold.

ASOS <b>134.85</b>	ANCHORAGE CENTER <b>119.5 317.5</b>	CTAF <b>122.9</b>
-----------------------	--	----------------------



CATEGORY	A	B	C	D
LPV DA		1890-1¼	317 (400-1¼)	
LNAV/VNAV DA		1908-1¼	335 (400-1¼)	
LNAV MDA		1900-1	327 (400-1)	
CIRCLING	1980-1 394 (400-1)	2040-1 454 (500-1)	2040-1½ 454 (500-1½)	2140-2 554 (600-2)



AK, 22 OCT 2009 to 17 DEC 2009

AK, 22 OCT 2009 to 17 DEC 2009

GULKANA, ALASKA  
Amdt 2 08213

62° 09' N-145° 27' W

# GULKANA (GKN) (PAGK)

## RNAV (GPS) RWY 33