

GULKANA, ALASKA

AL-1220 (FAA)

RNAV (GPS) RWY 15

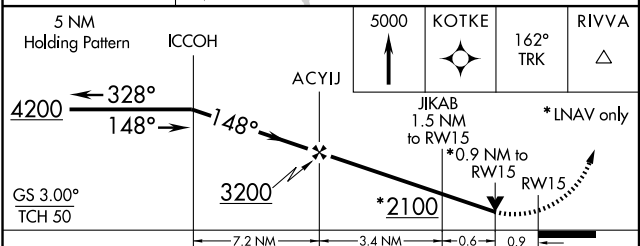
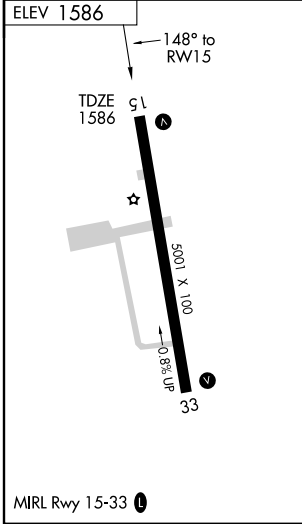
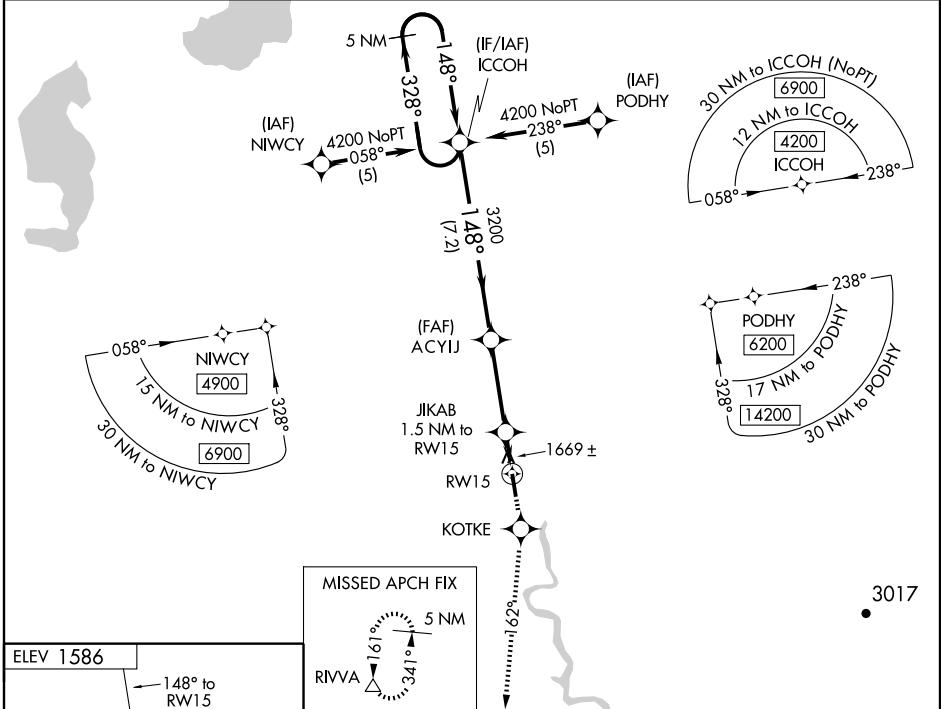
GULKANA (GKN) (PAGK)

WAAS CH 56307 W15A	APP CRS 148°	Rwy Idg TDZE Apt Elev	5001 1586 1586
--	------------------------	-----------------------------	---

⚠ For uncompensated Baro-VNAV systems, LNAV/VNAV NA below -28°C (-18°F) or above 45°C (114°F). DME/DME RNP-0.3 NA. Visibility reduction by helicopters NA. When local altimeter setting not received, procedure NA.

MISSED APPROACH: Climb to 5000 direct KOTKE and via 162° track to RIVVA and hold.

ASOS 134.85	ANCHORAGE CENTER 119.5 317.5	CTAF 122.9
-----------------------	--	----------------------



CATEGORY	A	B	C	D
LPV DA		1918-1¼	332 (400-1¼)	
LNAV/VNAV DA		1952-1¼	366 (400-1¼)	
LNAV MDA		1920-1	334 (400-1)	
CIRCLING	1980-1 394 (400-1)	2040-1 454 (500-1)	2040-1½ 454 (500-1½)	2140-2 554 (600-2)

GULKANA, ALASKA
Amdt 2 08213

62° 09' N-145° 27' W

GULKANA (GKN) (PAGK)

RNAV (GPS) RWY 15

AK, 22 OCT 2009 to 17 DEC 2009

AK, 22 OCT 2009 to 17 DEC 2009