

APCH CRS	Rwy Idg	8570
248°	TDZE	454
	Arpt Elev	454

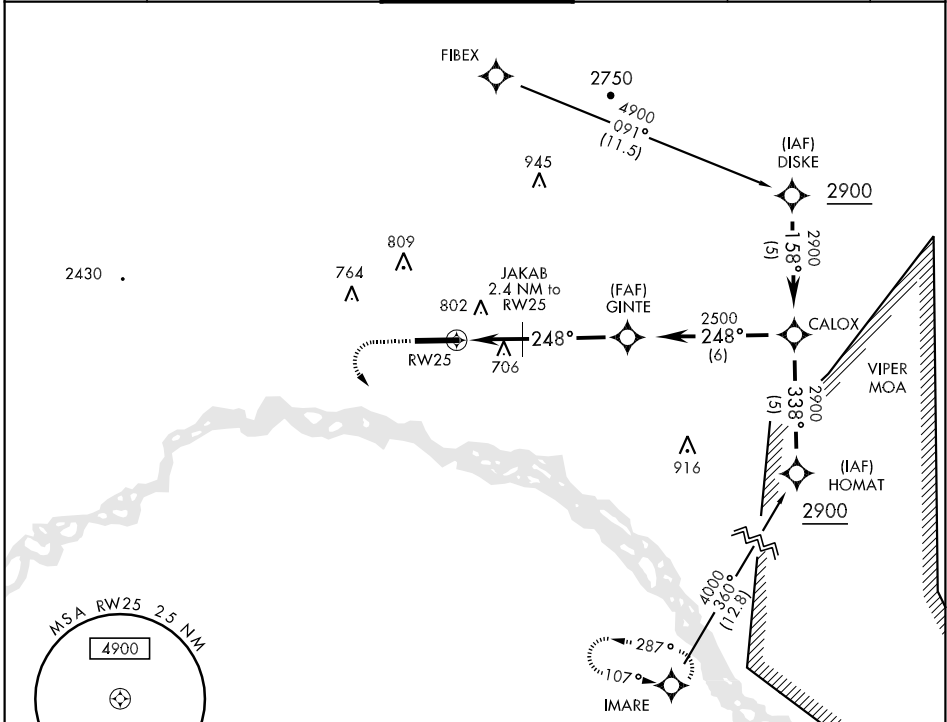
AL-1219 [USA]

LADD AAF (PAFB)

▼ *Circling not authorized N of Rwy 7-25.
DME/DME RNP-0.3 not authorized.

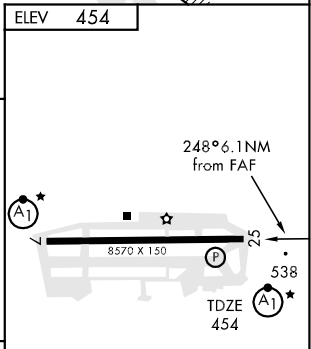
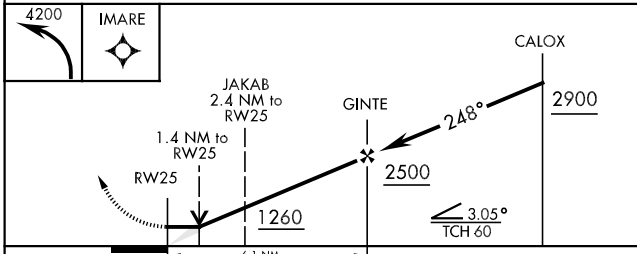
ALSIF-1 MISSED APPROACH: Climbing left turn to 4200 direct IMARE and hold.

ATIS ★	FAIRBANKS APP CON	LADD TOWER ★	GND CON	BASE OPS	ASR/PAR
134.25	126.5 381.4 (360°-179°) 125.35 363.2 (180°-359°)	125.0 (CTAF) 0 241.0	121.7 261.3	118.9	



AK, 22 OCT 2009 to 17 DEC 2009

AK, 22 OCT 2009 to 17 DEC 2009



CATEGORY	A	B	C	D
LNAV MDA	960-½	506 (600-½)	960-1	506 (600-1)
CIRCLING *	960-1	506 (600-1)	1000-1½ 546 (600-1½)	1020-2 566 (600-2)

HIRL Rwy 7-25

* ALS non-standard