

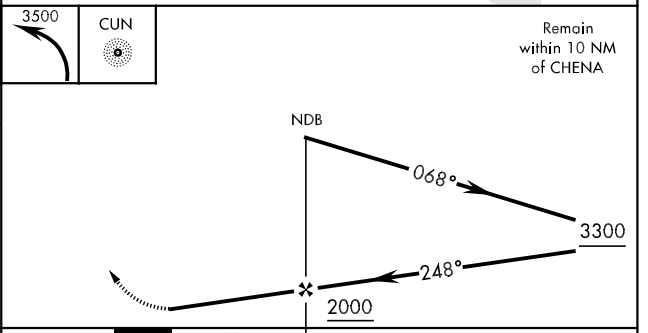
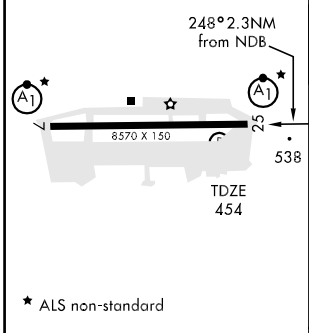
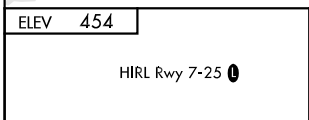
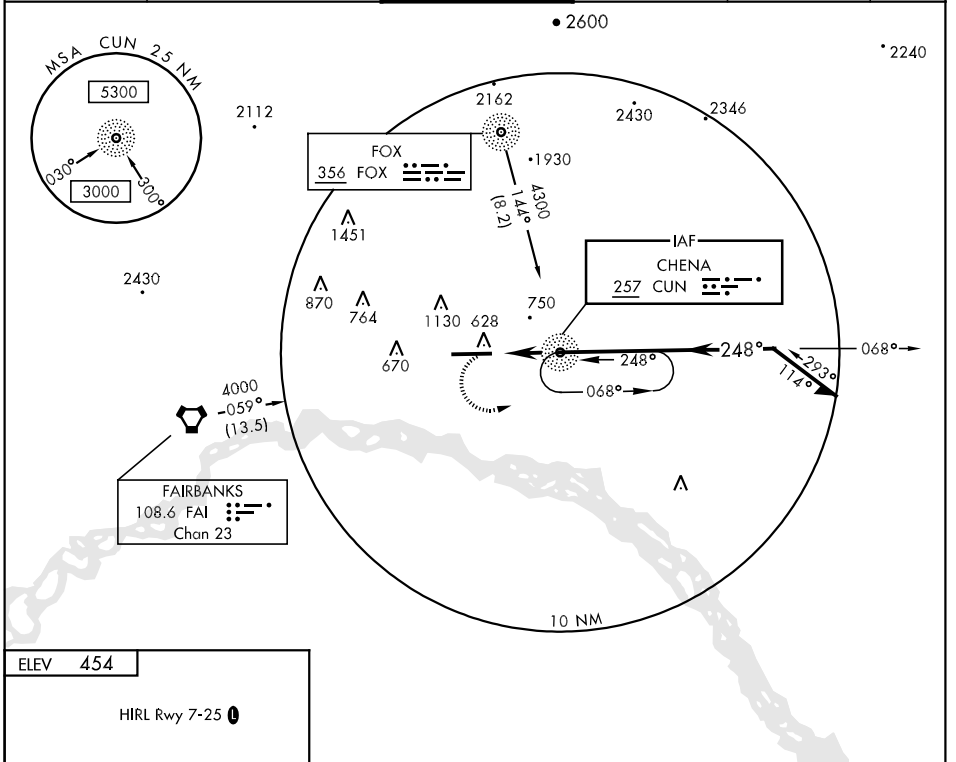
NDB CUN <b>257</b>	APCH CRS <b>248°</b>	Rwy Idg TDZE Arprt Elev <b>8570</b> <b>454</b> <b>454</b>
-----------------------	-------------------------	--

AL-1219 [USA]

LADD AAF (PAFB)

▼ \* Circling not authorized N of Rwy 7-25. ALSIF-1 MISSED APPROACH: Climbing left turn to 3500 direct to CUN NDB and hold, continue climb in hold to 3500.

ATIS* <b>134.25</b>	FAIRBANKS APP CON <b>126.5 381.4</b> (360°-179°) <b>125.35 363.2</b> (180°-359°)	LADD TOWER* <b>125.0</b> (CTAF) <b>0 241.0</b>	GND CON <b>121.7 261.3</b>	BASE OPS <b>118.9</b>	ASR/PAR
------------------------	--	---	-------------------------------	--------------------------	---------



FAF to MAP 2.3 NM					
Knots	60	90	120	150	180
Min:Sec	2:18	1:32	1:09	0:55	0:46
CATEGORY	A	B	C	D	
CIRCLING	1220-1 766 (800-1)	1220-1½ 766 (800-1¼)	1220-2¼ 766 (800-2¼)	1220-2½ 766 (800-2½)	

AK, 22 OCT 2009 to 17 DEC 2009

AK, 22 OCT 2009 to 17 DEC 2009