


VORTAC FAI 108.6 Chan 23	APCH CRS 237°	Rwy Idg 8570 TDZE 454 Arpt Elev 454
--	-------------------------	--

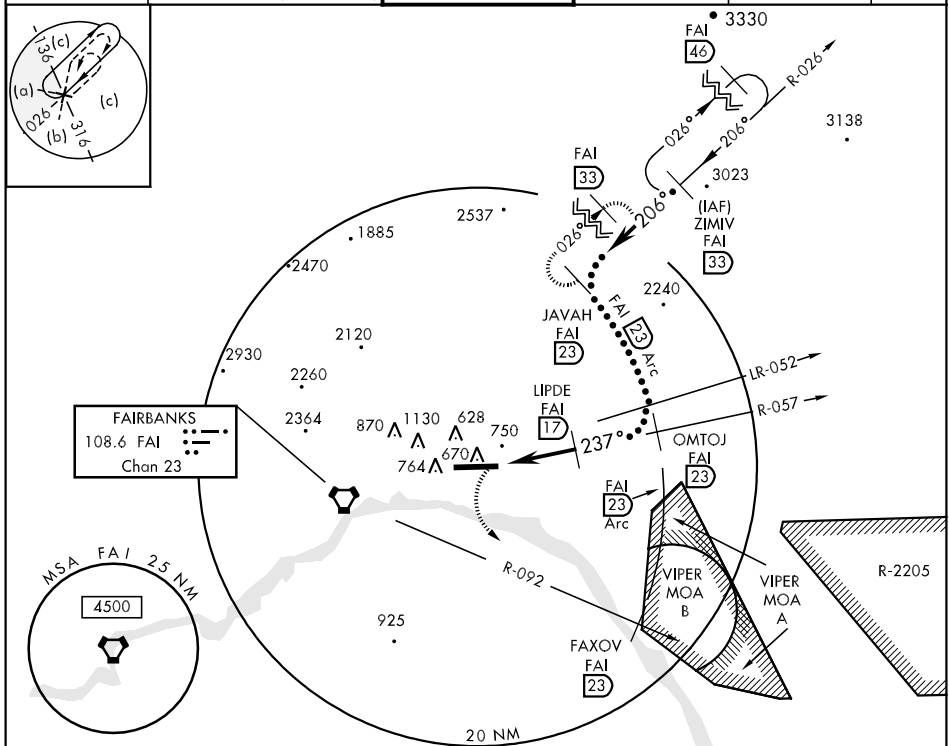
JAL-1219 [USA]

LADD AAF (PAFB)

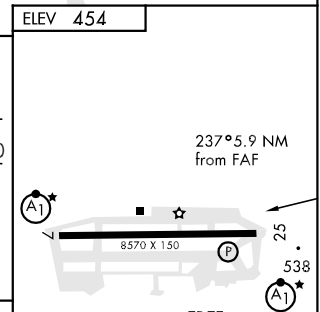
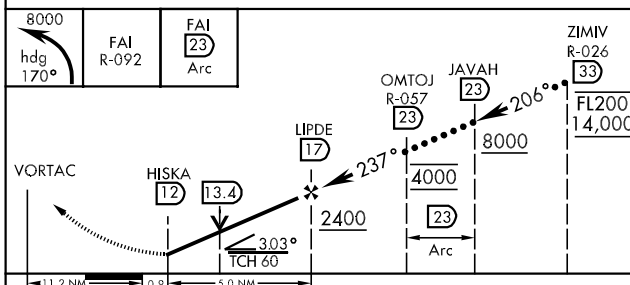
* When ALS inop, increase visibilities ½ mile.
 ** Circling Not Authorized North of Rwy 7-25.

ALSF-1
 MISSED APPROACH: Climbing left turn to 8000 via heading 170° and FAI R-092 to FAXOV/23 DME then Arc Northbound to JAVAH/23 DME and hold.

ATIS* 134.25	FAIRBANKS APP CON 126.5 381.4 (360°-179°) 125.35 363.2 (180°-359°)	LADD TOWER* 125.0 (CTAF) 0 241.0	GND CON 121.7 261.3	BASE OPS 118.9	ASR/PAR
------------------------	--	---	-------------------------------	--------------------------	---------



EMERG SAFE ALT 100 NM FROM VORTAC 15,100



CATEGORY	C	D	E
S-25 *	1240-1¾ 786 (800-1¾)	1240-2 786 (800-2)	1240-2¼ 786 (800-2¼)
CIRCLING **	1240-2¼ 786 (800-2¼)	1240-2½ 786 (800-2½)	1240-2¾ 786 (800-2¾)

* ALS non-standard

AK, 22 OCT 2009 to 17 DEC 2009

AK, 22 OCT 2009 to 17 DEC 2009