

APCH CRS	Rwy Idg	8000
187°	TDZE	1251
	Arpt Elev	1291

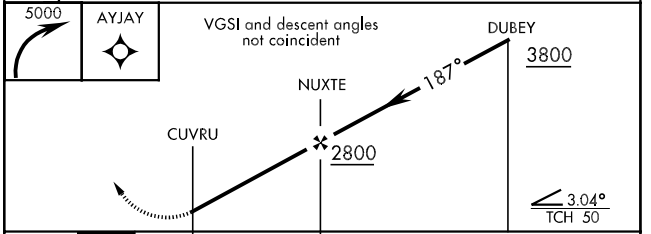
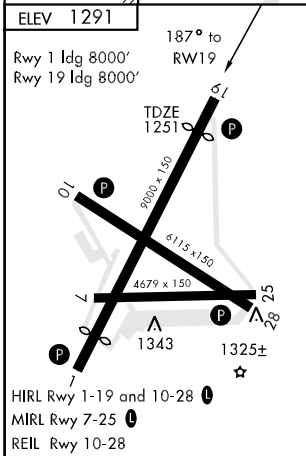
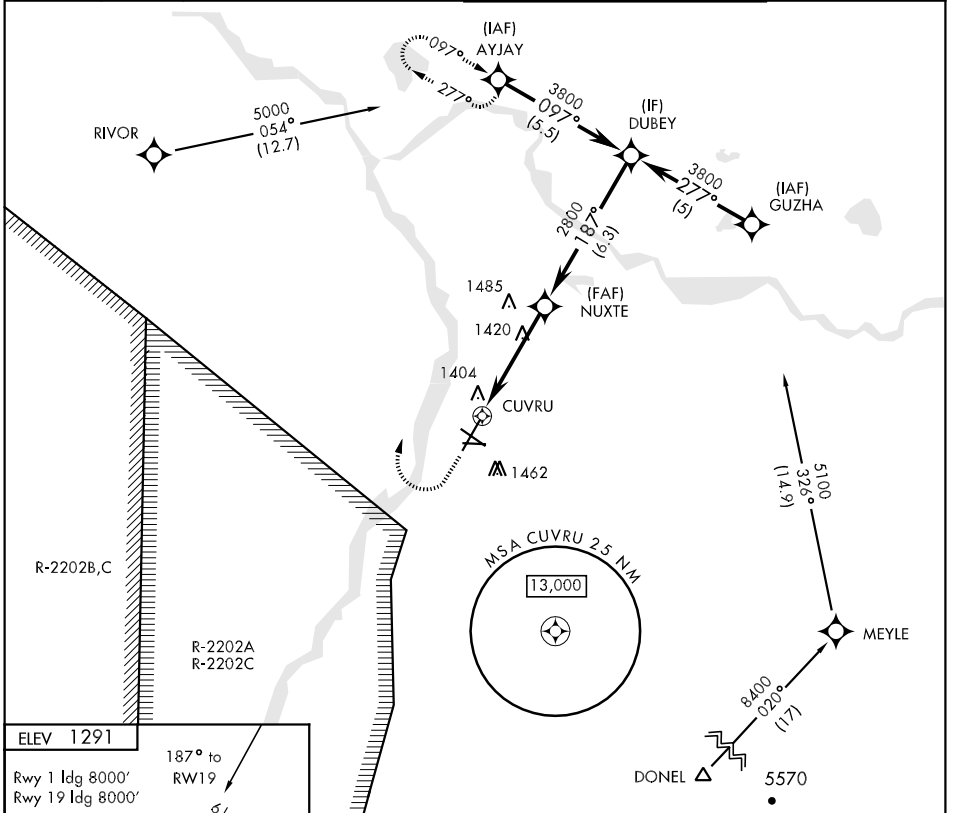
AL-1218 [USA]

ALLEN AAF (PABI)

▽ DME/DME RNP -0.3 NA
 * Circling not authorized South of Rwy 7-25.

MISSED APPROACH: Climbing right turn to 5000, direct AYJAY and hold.

ATIS	ASOS	ANCHORAGE CENTER	ALLEN TOWER *	GND CON
132.075	135.65	135.3 322.5 (CTAF) 122.9	119.8 235.775 40.8 (E) FM	118.225 251.05



CATEGORY	A	B	C	D
LNAV MDA	1720-1 469 (500-1)	1720-1 1/4 469 (500-1 1/2)	1720-1 1/2 469 (500-1 1/2)	1720-1 1/2 469 (500-1 1/2)
CIRCLING *	1720-1 429 (500-1)	1760-1 469 (500-1)	1760-1 1/2 469 (500-1 1/2)	1860-2 569 (600-2)

AK, 22 OCT 2009 to 17 DEC 2009

AK, 22 OCT 2009 to 17 DEC 2009