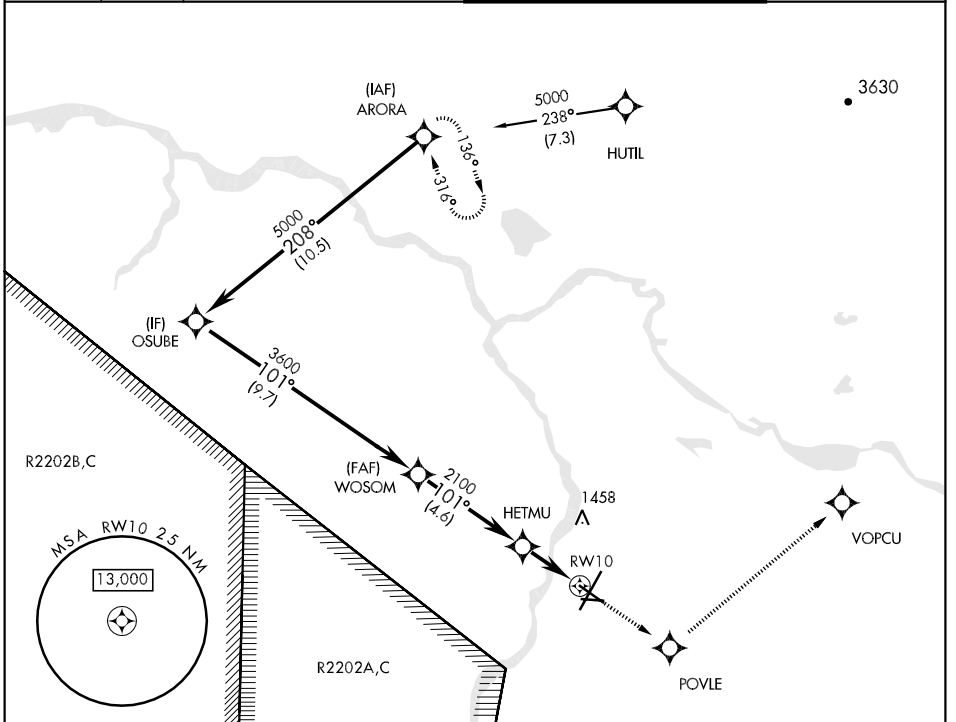


APCH CRS	Rwy Idg	<b>6115</b>
<b>101°</b>	TDZE	<b>1258</b>
	Arpt Elev	<b>1291</b>

AL-1218 [USA]

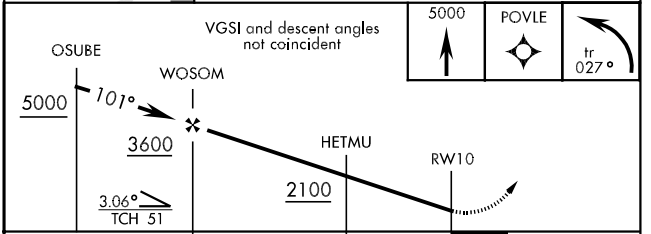
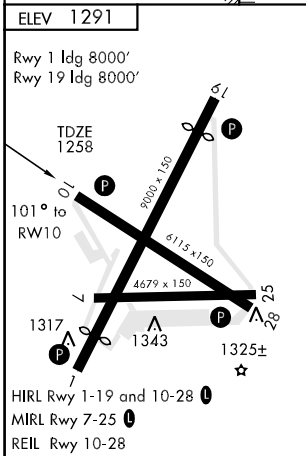
ALLEN AAF (PABI)

<p><b>▽</b> DME/DME RNP -0.3 NA. * Circling not authorized South of Rwy 7-25.</p>		<p>MISSED APPROACH: Climb to 5000 direct POVLE, and via 027° track to VOPCU, left turn via 289° track to ARORA and hold.</p>	
<p>ATIS <b>132.075</b></p>	<p>ASOS <b>135.65</b></p>	<p>ANCHORAGE CENTER <b>135.3 322.5 (CTAF) 122.9</b></p>	<p>ALLEN TOWER * <b>119.8 235.775 40.8 (E) FM</b></p>
		<p>GND CON <b>118.225 251.05</b></p>	



AK, 22 OCT 2009 to 17 DEC 2009

AK, 22 OCT 2009 to 17 DEC 2009



CATEGORY	A	B	C	D
LNAV MDA	1580-1 322 (300-1)			
CIRCLING *	1720-1 429 (500-1)	1760-1 469 (500-1)	1760-1½ 469 (500-1½)	1860-2 569 (600-2)