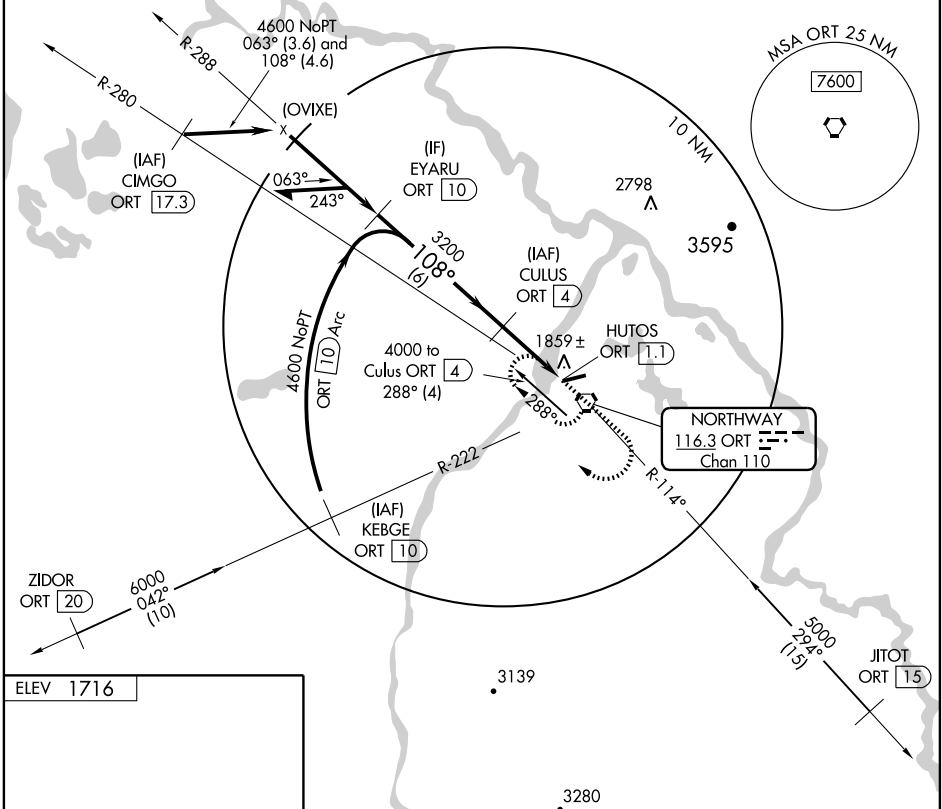


VORTAC ORT <b>116.3</b> Chan <b>110</b>	APP CRS <b>108°</b>	Rwy Idg TDZE Apt Elev <b>1716</b>	<b>N/A</b> <b>N/A</b> <b>1716</b>
---	------------------------	---	---

**VOR/DME-A**  
NORTHWAY (ORT)(PAOR)

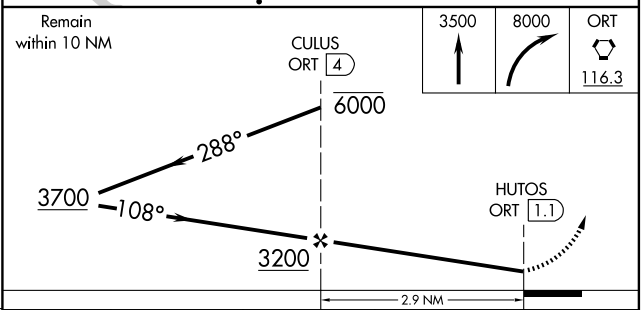
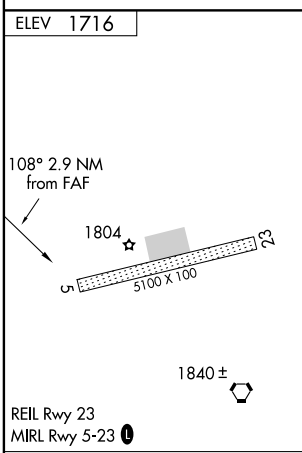
**MISSED APPROACH:** Climb to 3500 then climbing right turn to 8000 direct ORT VORTAC and hold, continue climb-in-hold to 8000.

ASOS <b>135.4</b>	ANCHORAGE CENTER <b>126.55 323.0</b>	NORTHWAY RADIO <b>123.6 (CTAF) 0</b>
----------------------	---	---



AK, 22 OCT 2009 to 17 DEC 2009

AK, 22 OCT 2009 to 17 DEC 2009



CATEGORY	A	B	C	D
	2220-1	504 (600-1)	2220-1½ 504 (600-1½)	2280-2 564 (600-2)

Knots	60	90	120	150	180
Min:Sec					