

NORTHWAY, ALASKA

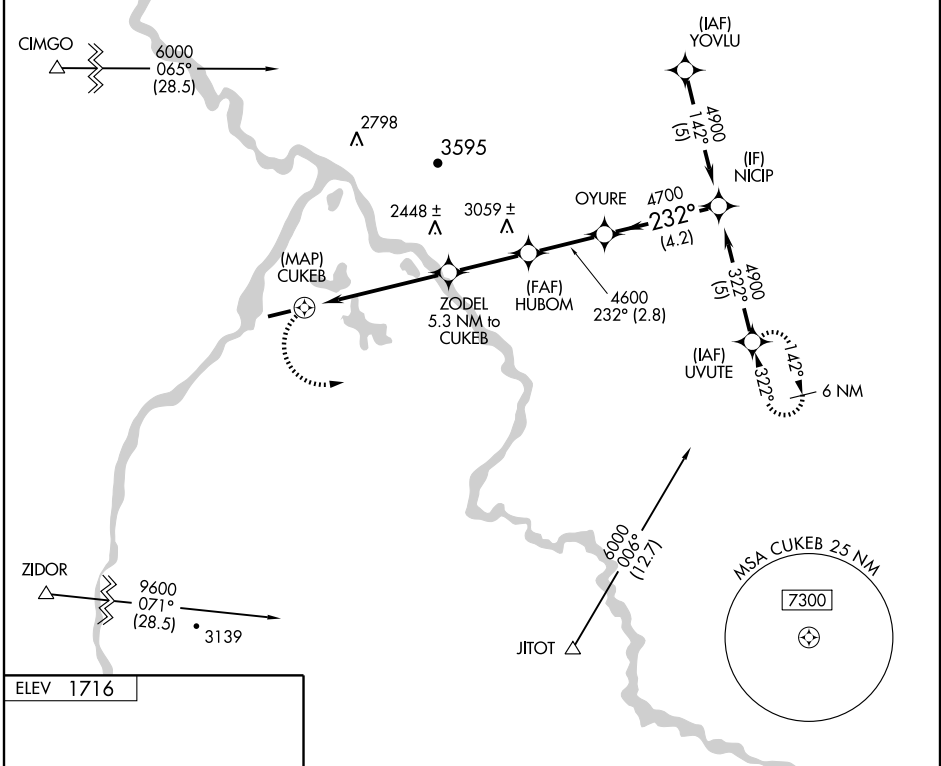
AL-1216 (FAA)

RNAV (GPS) RWY 23 NORTHWAY (ORT)(PAOR)

APP CRS 232°	Rwy Idg TDZE Apt Elev	5100 1713 1716
------------------------	-----------------------------	---

▼ DME/DME RNP-0.3 NA.	MISSED APPROACH: Climbing left turn to 4700 direct UVUTE and hold.
------------------------------	--

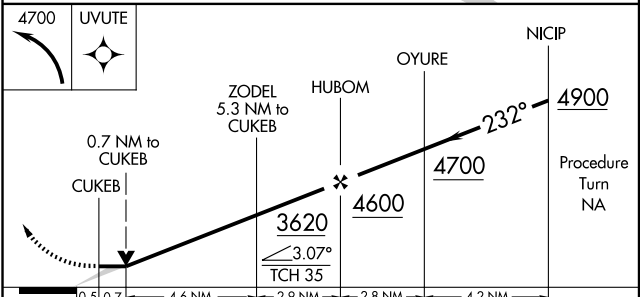
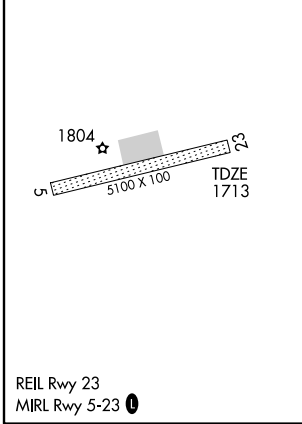
ASOS 135.4	ANCHORAGE CENTER 126.55 323.0	NORTHWAY RADIO 123.6 (CTAF) 0
----------------------	---	---



AK, 22 OCT 2009 to 17 DEC 2009

AK, 22 OCT 2009 to 17 DEC 2009

ELEV 1716



CATEGORY	A	B	C	D
LNAV MDA	2140-1	427 (500-1)	2140-1¼ 427 (500-1¼)	2140-1½ 427 (500-1½)
CIRCLING	2220-1	504 (600-1)	2220-1½ 504 (600-1½)	2280-2 564 (600-2)

NORTHWAY, ALASKA
Orig 09127

62° 58' N-141° 56' W

NORTHWAY (ORT)(PAOR) RNAV (GPS) RWY 23