

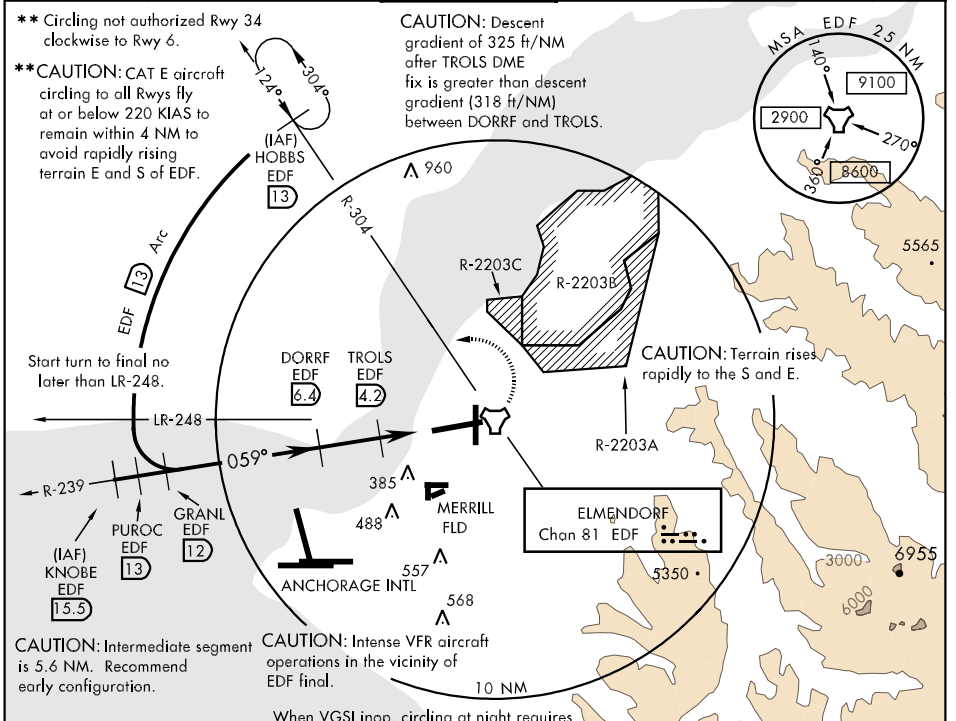
TACAN Chan 81	EDF APCH CRS 059°	Rwy Idg 10,000 TDZE 174 Arpt Elev 212	AL-1196 [USAF]	ELMENDORF AFB (PAED)
----------------------	--------------------------	--	----------------	----------------------

⚠ *When ALS inop, increase CAT AB RVR to 50 and vis to 1 mile, CAT C RVR to 60 and vis to 1½ miles, CAT D vis to 1½ miles, CAT E vis to 1¾ miles.

ALSF-1

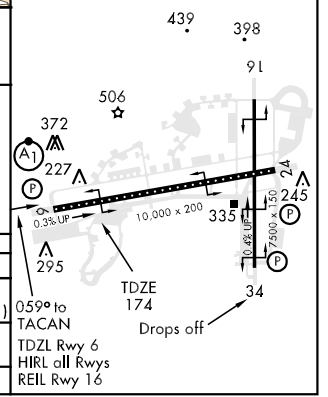
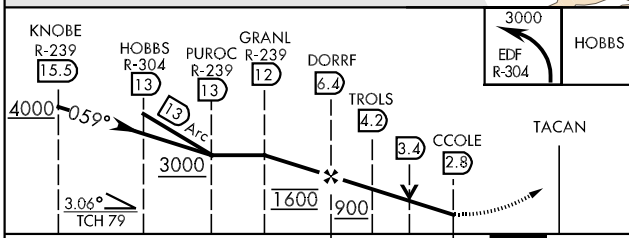
MISSED APPROACH: Climbing left turn to 3000 via EDF R-304 to HOBBS and hold. Climb in holding authorized.

ATIS ★ 124.3 273.5	ANCHORAGE APP CON North 118.6 290.5 South 123.8 259.3	ELMENDORF TOWER 127.2 352.05	GND CON 121.8 275.8	CLNC DEL 128.8 306.925	PAR
------------------------------	---	--	-------------------------------	----------------------------------	-----



EMERG SAFE ALT 100 NM 15,200

ELEV 212



CATEGORY	A	B	C	D	E
S-6 *	640/24 466 (500-½)		640/40 466 (500-¾)	640/50 466 (500-1)	640/60 466 (500-1½)
CIRCLING **	820-1 608 (700-1)		820-1¾ 608 (700-1¾)	820-2 608 (700-2)	880-3 668 (700-3)
S-PAR 6	374/18 200 (200-½)		374/24 200 (200-½)		GS 3.0°

AK, 22 OCT 2009 to 17 DEC 2009

AK, 22 OCT 2009 to 17 DEC 2009