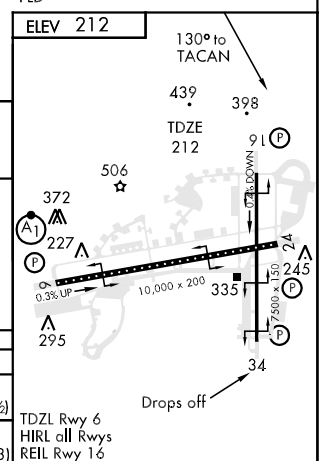
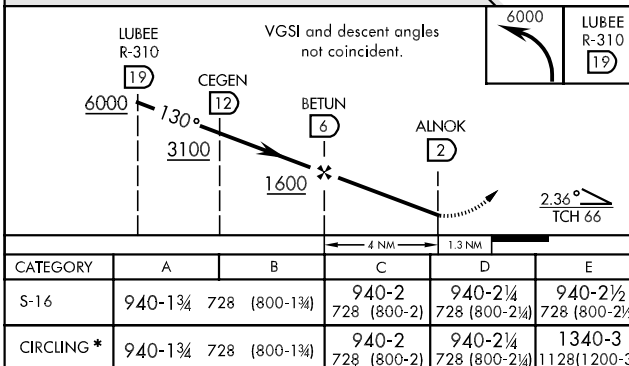
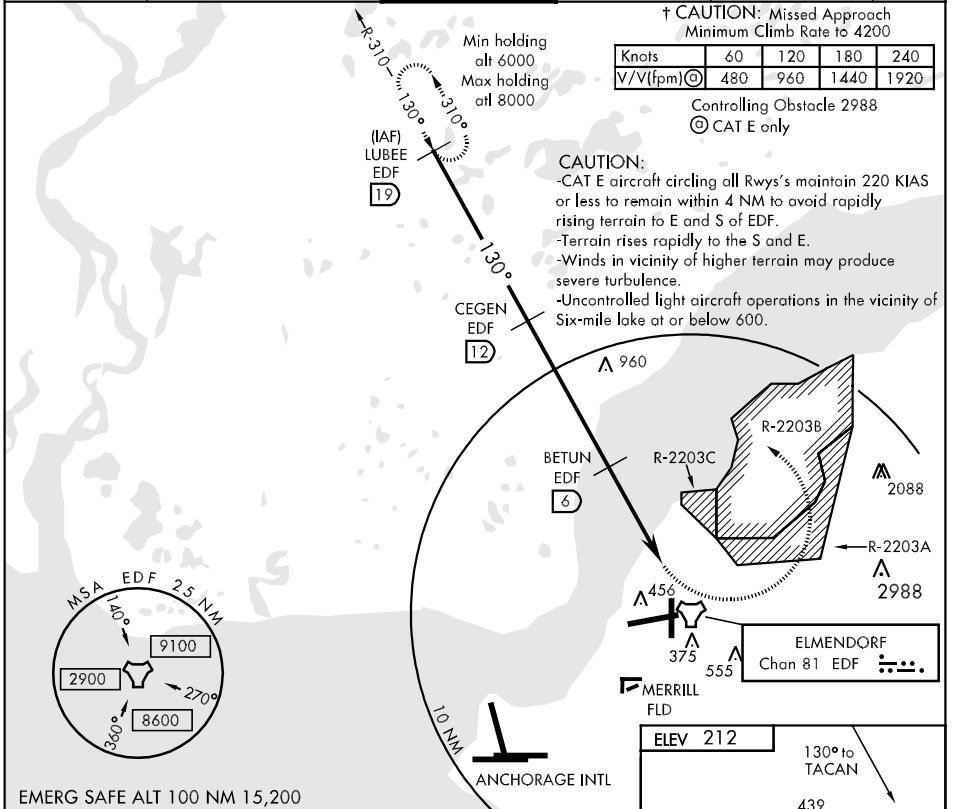


TACAN EDF Chan <b>81</b>	APCH CRS <b>130°</b>	Rwy Idg TDZE Arpt Elev <b>7500</b> <b>212</b> <b>212</b>	AL-1196 [USAF]	ELMENDORF AFB (PAED)
▼ * Circling not authorized RWY 34 clockwise to RWY 6.			† MISSED APPROACH: Climbing left turn to 6000 direct EDF TACAN R-310/19 DME (LUBEE) and hold. Climb in hold authorized.	

ATIS ★ <b>124.3 273.5</b>	ANCHORAGE APP CON <b>North 118.6 290.5</b> <b>South 123.8 259.3</b>	ELMENDORF TOWER <b>127.2 352.05</b>	GND CON <b>121.8 275.8</b>	CLNC DEL <b>128.8 306.925</b>	PAR
------------------------------	---	--	-------------------------------	----------------------------------	-----



AK, 22 OCT 2009 to 17 DEC 2009

AK, 22 OCT 2009 to 17 DEC 2009