

(MATSU.MATSU5) 09127  
**MATSU FIVE ARRIVAL**

ST-1196 (FAA)

ELMENDORF AFB  
 ANCHORAGE, ALASKA

ANCHORAGE APP CON  
 118.6 290.5  
 ANCHORAGE CENTER  
 125.55 254.3  
 ELMENDORF TOWER  
 127.2 352.05  
 GND CON  
 121.8 275.8  
 ATIS  
 124.3 273.5

CRUZR  
 N 62°17.62'  
 W 148°50.83'  
FL350  
FL260

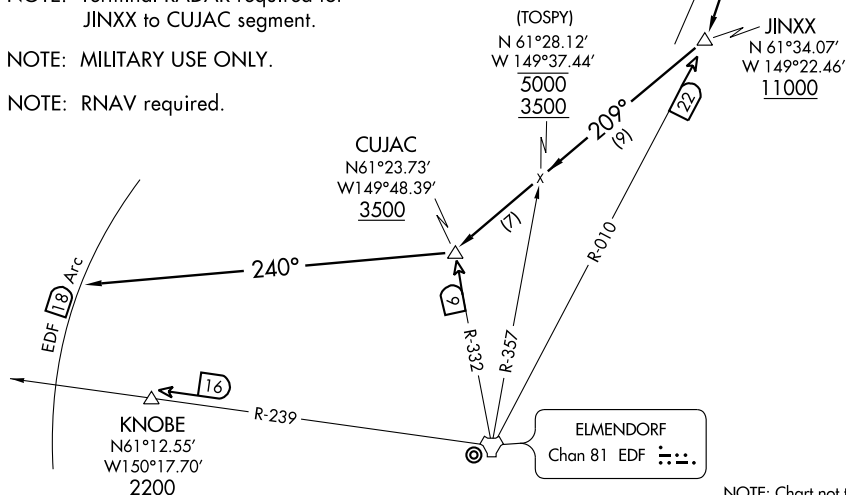
FOX  
 MOA

NOTE: If no ATC radar vector instructions have been received prior to EDF 13 DME when outbound from CUJAC, execute lost communications instructions.

NOTE: Terminal RADAR required for JINXX to CUJAC segment.

NOTE: MILITARY USE ONLY.

NOTE: RNAV required.



AK, 22 OCT 2009 to 17 DEC 2009

AK, 22 OCT 2009 to 17 DEC 2009

**ARRIVAL DESCRIPTION**

**CRUZR TRANSITION (CRUZR.MATSU5):** From over CRUZR via heading 178° to JINXX, then heading 209° to CUJAC, depart CUJAC heading 240°. Thence ....

... Expect vectors within EDF 18 DME to ILS Y or TACAN Rwy 6 approach.

**LOST COMMUNICATIONS:**

If practicable, proceed to EDF VFR via CUJAC direct Point No-Name Visual Check Point. Then proceed to Rwy 6 or one mile initial to Rwy 24. Rock wings on initial. If unable to proceed to EDF VFR, descend via the MATSU arrival to CUJAC. Cross CUJAC at or above 3500. Fly heading 240° and join the EDF 18 DME Arc west of EDF. Arc south and join the EDF R-239 to KNOBE. Cross KNOBE at or above 2200 and execute ILS Y or TACAN Rwy 6 approach to ELMENDORF AFB.

**MATSU FIVE ARRIVAL**  
 (MATSU.MATSU5) 09127

ANCHORAGE, ALASKA  
 ELMENDORF AFB