

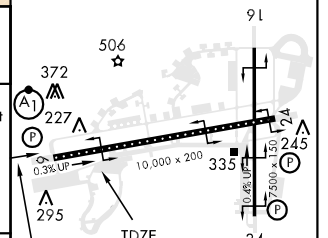
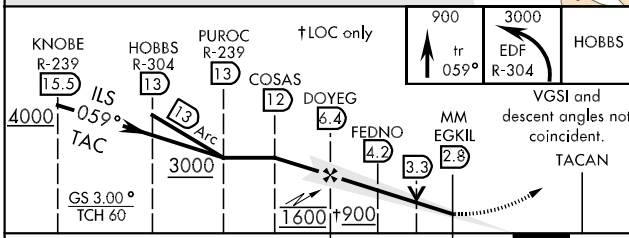
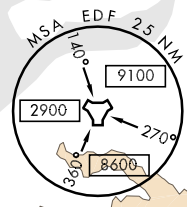
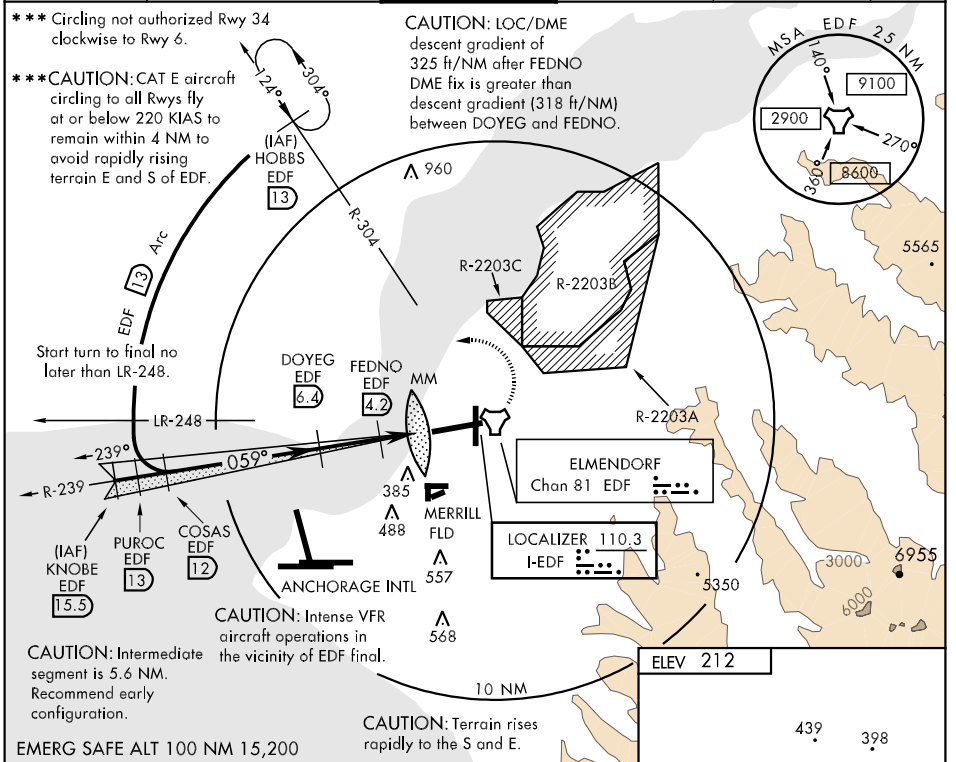
LOCALIZER <b>110.3</b>	APCH CRS <b>059°</b>	Rwy Idg <b>10,000</b> TDZE <b>174</b> Arpt Elev <b>212</b>	AL-1196 [USAF]	ELMENDORF AFB (PAED)
---------------------------	-------------------------	--	----------------	----------------------

**▼** \* When ALS inop, increase RVR to 40 and vis to 3/4 mile all CATS.  
**\*\*** When ALS inop, increase CAT AB RVR to 50 and vis to 1 mile, CAT CD RVR to 60 and vis to 1 1/4 miles, CAT E vis to 1 1/2 miles.



**MISSED APPROACH:** Climb to 900 tracking 059° then climbing left turn to 3000 via the EDF R-304 to HOBBS and hold.

ATIS ★ <b>124.3 273.5</b>	ANCHORAGE APP CON North <b>118.6 290.5</b> South <b>123.8 259.3</b>	ELMENDORF TOWER <b>127.2 352.05</b>	GND CON <b>121.8 275.8</b>	CLNC DEL <b>128.8 306.925</b>	PAR
------------------------------	---	--	-------------------------------	----------------------------------	-----



CATEGORY	A	B	C	D	E
S-ILS 6 *	374/18 200 (200-1/2)		374/24 200		(200-1/2)
S-LOC 6 **	600/24 426(400-1/2)		600/40 426(400-3/4)		600/50 426(400-1)
CIRCLING ***	820-1 608 (700-1)		820-1 3/4 608(700-1 3/4)	820-2 608(700-2)	880-3 668(700-3)
S-PAR 6	374/18 200 (200-1/2)		374/24 200 (200-1/2)		GS 3.0°

LOC FAF to MAP 3.6 NM					
Knots	60	90	120	150	180
Min:Sec	3:36	2:24	1:48	1:26	1:12

AK, 22 OCT 2009 to 17 DEC 2009

AK, 22 OCT 2009 to 17 DEC 2009