

CORDOVA, ALASKA

AL-1195 (FAA)

RNAV (GPS) RWY 27

CORDOVA/ MERLE K (MUDHOLE) SMITH (CDV)(PACV)

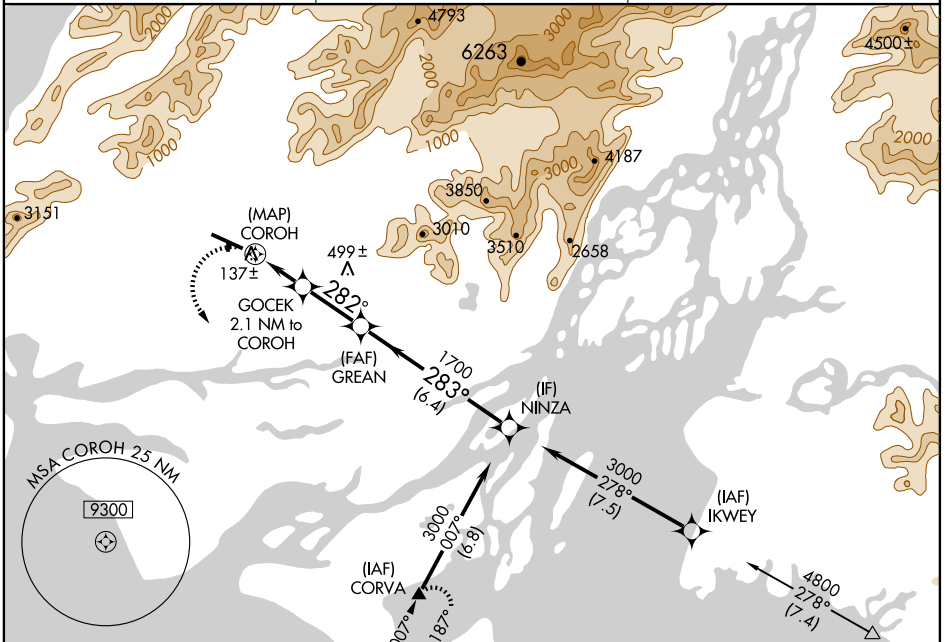
APP CRS	Rwy Idg	7500
282°	TDZE	53
	Apt Elev	54

▽ DME/DME RNP-0.3 NA. Circling NA north Rwy 9-27. Circling NA at night to Rwy 16-34. For inoperative MALSR, increase LNAV Cat A and B visibility to 1 mile, increase Cat D visibility to 1½ mile.



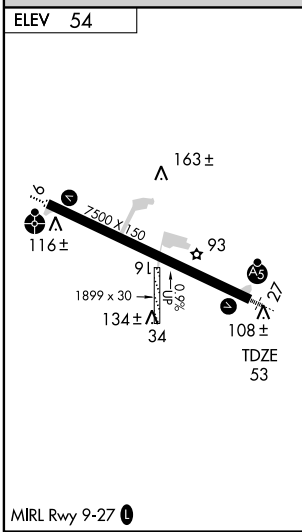
MISSED APPROACH: Climbing left turn to 3000 direct CORVA and hold.

ASOS 134.8	ANCHORAGE CENTER 119.3 133.6 269.4	JUNEAU RADIO 123.6 (CTAF) 122.2
----------------------	--	---



AK, 22 OCT 2009 to 17 DEC 2009

AK, 22 OCT 2009 to 17 DEC 2009



CORDOVA, ALASKA
Orig-B 09239

ELEV 54					
	0.5	0.7	1.4 NM	2.5 NM	6.4 NM
CATEGORY	A		B		D
LNAV MDA	460-¾ 407 (500-¾)				460-1 407 (500-1)
CIRCLING	460-1 406 (500-1)	520-1 466 (500-1)	520-1½ 466 (500-1½)	620-2 566 (600-2)	

CORDOVA/ MERLE K (MUDHOLE) SMITH (CDV)(PACV)
60° 30' N-145° 29' W

RNAV (GPS) RWY 27