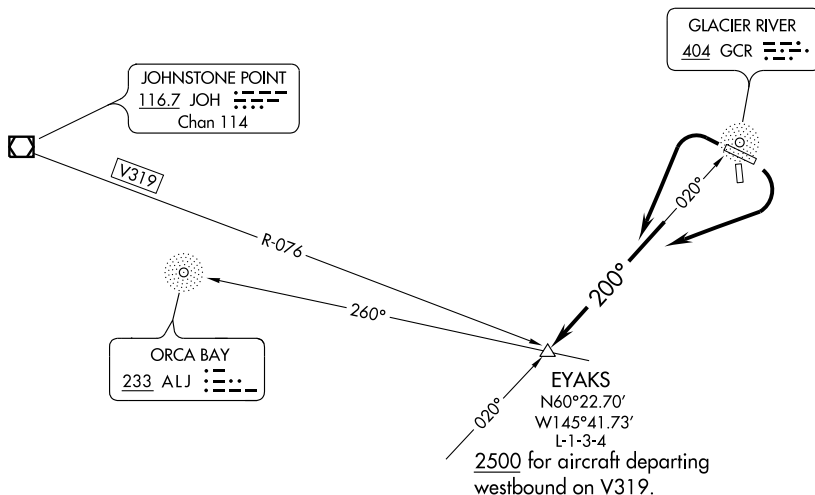


(EYAKS3.EYAKS) 09239

# EYAKS THREE DEPARTURE

CORDOVA/MERLE K. (MUDHOLE) SMITH (CDV)(PACV)  
SL-1195 (FAA) CORDOVA, ALASKA

ANCHORAGE CENTER  
119.3 269.4  
JUNEAU RADIO  
123.6 (CTAF) 122.2  
ASOS 134.8



NOTE: ADF required.

NOTE: Rwy 27: ATC climb of 219' per NM to 2500 required for aircraft departing westbound on V319.

### TAKE-OFF MINIMUMS

Rwy 9, 27, Standard. Do not exceed 210K until established on 200° bearing from GCR NDB.

### TAKE-OFF OBSTACLE NOTES

Rwy 9, Multiple trees and bushes beginning 149' from DER, 150' right of centerline, up to 27' AGL/119' MSL.

Multiple trees, bushes, and poles beginning 197' from DER, 106' left of centerline, up to 27' AGL/130' MSL.

Rwy 27, Multiple poles and bushes beginning 162' from DER, 261' right of centerline, up to 27' AGL/53' MSL.

Multiple trees beginning 69' from DER, 431' left of centerline, up to 27' AGL/48' MSL.

NOTE: Chart not to scale



### DEPARTURE ROUTE DESCRIPTION

TAKE-OFF RUNWAY 9: Climbing right turn to intercept the 200° bearing from GCR NDB to EYAKS INT, Thence. . . .

TAKE-OFF RUNWAY 27: Climbing left turn to intercept the 200° bearing from GCR NDB to EYAKS INT, Thence. . . .

. . . . via assigned route, maintain 5000, expect higher altitude 10 minutes after departure.

EYAKS THREE DEPARTURE  
(EYAKS3.EYAKS) 09239

CORDOVA, ALASKA  
CORDOVA/MERLE K. (MUDHOLE) SMITH (CDV)(PACV)

AK, 22 OCT 2009 to 17 DEC 2009

AK, 22 OCT 2009 to 17 DEC 2009