

(CASEL4.CASEL) 09239

# CASEL FOUR DEPARTURE

CORDOVA/MERLE K. (MUDHOLE) SMITH (CDV)(PACV)  
SL-1195 (FAA) CORDOVA, ALASKA

ANCHORAGE CENTER  
119.3 269.4  
JUNEAU RADIO  
123.6 (CTAF) 122.2  
ASOS 134.8

JOHNSTONE POINT  
116.7 JOH  
Chan 114

### TAKE-OFF MINIMUMS

Rwy 9, 27, Standard.

NOTE: ADF required.

NOTE: Do not exceed 210K until established on the 130° bearing from GCR NDB.

### TAKE-OFF OBSTACLE NOTES

- Rwy 9, Multiple trees and bushes beginning 149' from DER 150' right of centerline, up to 27' AGL/119' MSL. Multiple trees, bushes, and poles beginning 197' from DER, 106' left of centerline, up to 27' AGL/130' MSL.
- Rwy 27, Multiple poles and bushes beginning 162' from DER, 261' right of centerline, up to 27' AGL/53' MSL. Multiple trees beginning 69' from DER, 431' left of centerline, up to 27' AGL/48' MSL.

NOTE: Chart not to scale

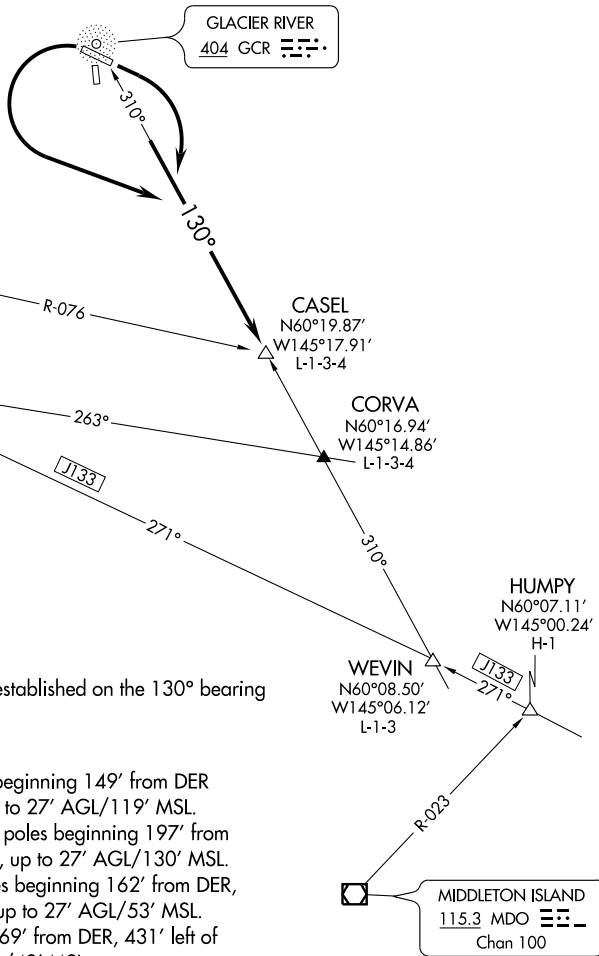


### DEPARTURE ROUTE DESCRIPTION

TAKE-OFF RUNWAY 9: Climbing right turn to intercept the 130° bearing from GCR NDB to CASEL INT, Thence. . . .

TAKE-OFF RUNWAY 27: Climbing left turn to intercept the 130° bearing from GCR NDB to CASEL INT, Thence. . . .

. . . .via assigned route. Maintain 5000 expect higher altitude 10 minutes after departure.



AK, 22 OCT 2009 to 17 DEC 2009

AK, 22 OCT 2009 to 17 DEC 2009

CASEL FOUR DEPARTURE  
(CASEL4.CASEL) 09239

CORDOVA, ALASKA  
CORDOVA/MERLE K. (MUDHOLE) SMITH (CDV)(PACV)