

YAKUTAT, ALASKA

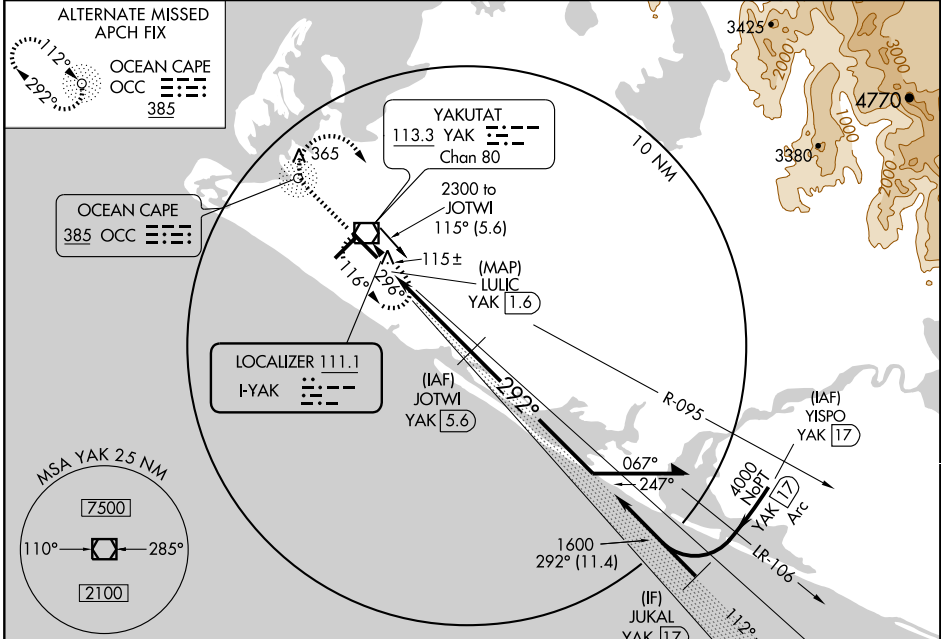
AL-1193 (FAA)

LOC/DME BC RWY 29 YAKUTAT (YAK) (PAYA)

LOC I-YAK 111.1	APP CRS 292°	Rwy Idg 7745 TDZE 26 Apt Elev 33
---------------------------	------------------------	---

DME from YAK VOR/DME. Simultaneous reception of I-YAK and YAK VOR/DME required.	MALSR	MISSED APPROACH: Climb to 500, then climbing right turn to 2000 direct YAK VOR/DME and hold, continue climb-in-hold to 2000.
--	-------	---

ASOS 135.75	ANCHORAGE CENTER 119.0 263.1	JUNEAU RADIO 123.6 (CTAF) 122.2
-----------------------	--	---



ALTERNATE MISSED APCH FIX

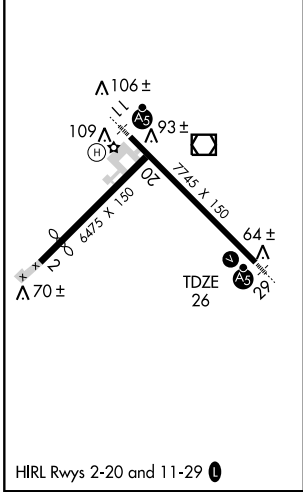
OCEAN CAPE
OCC **385**

OCEAN CAPE
385 OCC

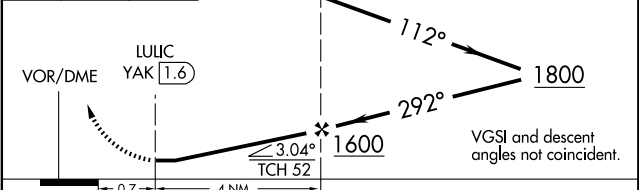
LOCALIZER 111.1
I-YAK

MSA YAK 25 NM

ELEV 33



500	2000	YAK 113.3	Remain within 10 NM
-----	------	------------	---------------------



CATEGORY	A	B	C	D
S-29	380-1/2 354 (400-1/2)		380-3/4 354 (400-3/4)	
CIRCLING	480-1 447 (500-1)	500-1 467 (500-1)	520-1 1/2 487 (500-1 1/2)	600-2 567 (600-2)

YAKUTAT, ALASKA
Amdt 5 09183

59°30'N - 139°39'W

YAKUTAT (YAK) (PAYA) LOC/DME BC RWY 29

AK, 22 OCT 2009 to 17 DEC 2009

AK, 22 OCT 2009 to 17 DEC 2009