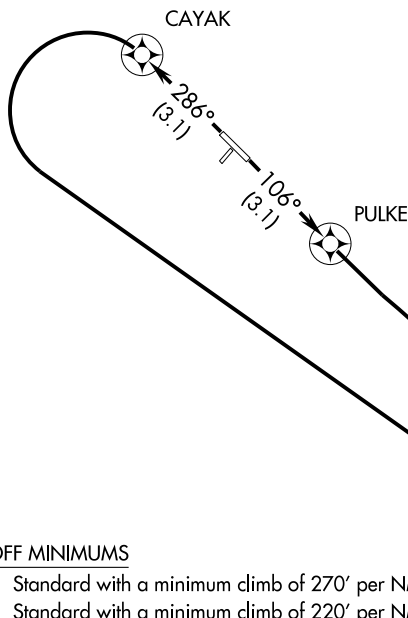


# SISTERS ONE DEPARTURE (RNAV)

ANCHORAGE CENTER  
133.2 360.65  
JUNEAU RADIO  
122.65  
CTAF  
122.5



### DEPARTURE OBSTACLES

Rwy 11: 747' MSL tree.  
Rwy 29: 1914' MSL tree.

### TAKE-OFF MINIMUMS

Rwy 11: Standard with a minimum climb of 270' per NM to 5400.  
Rwy 29: Standard with a minimum climb of 220' per NM to 5400.  
Rwy 2, 20: NA - Rwy limitations.

### NOTE:

1. GPS Required
2. RNAV 1

NOTE: Chart not to scale.



### DEPARTURE ROUTE DESCRIPTION

TAKE-OFF RUNWAY 11: Climb via 106° course to PULKE WP, then climbing right turn to 6000 or assigned altitude direct SSR VORTAC. . . .

TAKE-OFF RUNWAY 29: Climb via 286° course to CAYAK WP, then climbing left turn to 6000 or assigned altitude direct SSR VORTAC. . . .

. . . . cross SSR VORTAC at or above MEA/MCA for direction of flight thence further clearance.