

# CUSHI FOUR DEPARTURE

SL-1191 (FAA)

JUNEAU INTL (JNU)(PAJN)

JUNEAU, ALASKA

ATIS 135.2  
 GND CON  
 121.9  
 JUNEAU TOWER\*  
 118.7 (CTAF) 278.3  
 ANCHORAGE CENTER  
 133.9  
 JUNEAU RADIO  
 122.2

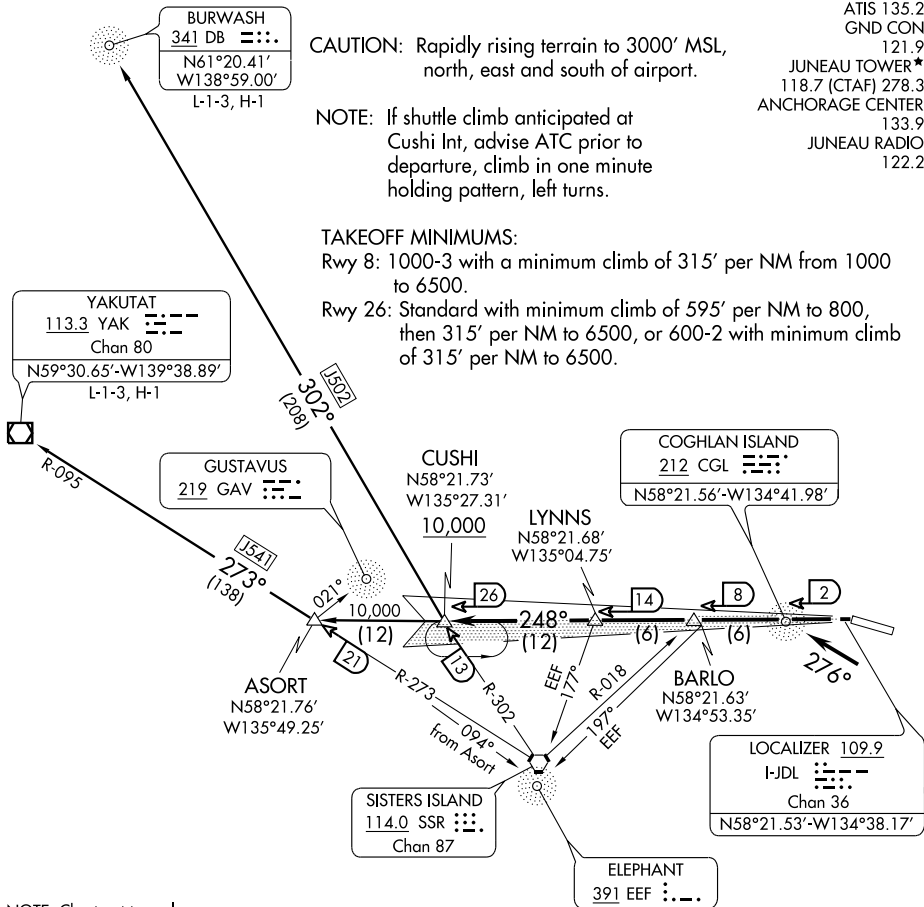
**CAUTION:** Rapidly rising terrain to 3000' MSL, north, east and south of airport.

**NOTE:** If shuttle climb anticipated at Cushi Int, advise ATC prior to departure, climb in one minute holding pattern, left turns.

### TAKEOFF MINIMUMS:

Rwy 8: 1000-3 with a minimum climb of 315' per NM from 1000 to 6500.

Rwy 26: Standard with minimum climb of 595' per NM to 800, then 315' per NM to 6500, or 600-2 with minimum climb of 315' per NM to 6500.



AK, 22 OCT 2009 to 17 DEC 2009

AK, 22 OCT 2009 to 17 DEC 2009

NOTE: Chart not to scale.

## DEPARTURE ROUTE DESCRIPTION

**TAKE-OFF RUNWAY 8:** Turn right as soon as practical. Climb in visual conditions direct CGL NDB or heading 276° to I-JDL W course/2 DME (visual conditions must be maintained from takeoff until established over CGL NDB or I-JDL W course/2 DME at or above 1000 MSL); cross CGL NDB or I-JDL W course/2 DME at or above 1000 MSL, Thence . . . .

**TAKE-OFF RUNWAY 26:** Turn left heading 248° to CGL NDB or I-JDL W course/2 DME.

Thence . . . .

. . . . then via I-JDL W course or 248° bearing from CGL NDB to cross CUSHI INT/I-JDL 26 DME at or above 10,000, Thence . . . . via (transition).

**BURWASH TRANSITION (CUSHI4.DB):** From over CUSHI INT via J502 to DB NDB.

**YAKUTAT TRANSITION (CUSHI4.YAK):** From over CUSHI INT via CGL or I-JDL W course 248° bearing to ASORT INT, thence via J541 to YAK VORTAC.

# CUSHI FOUR DEPARTURE