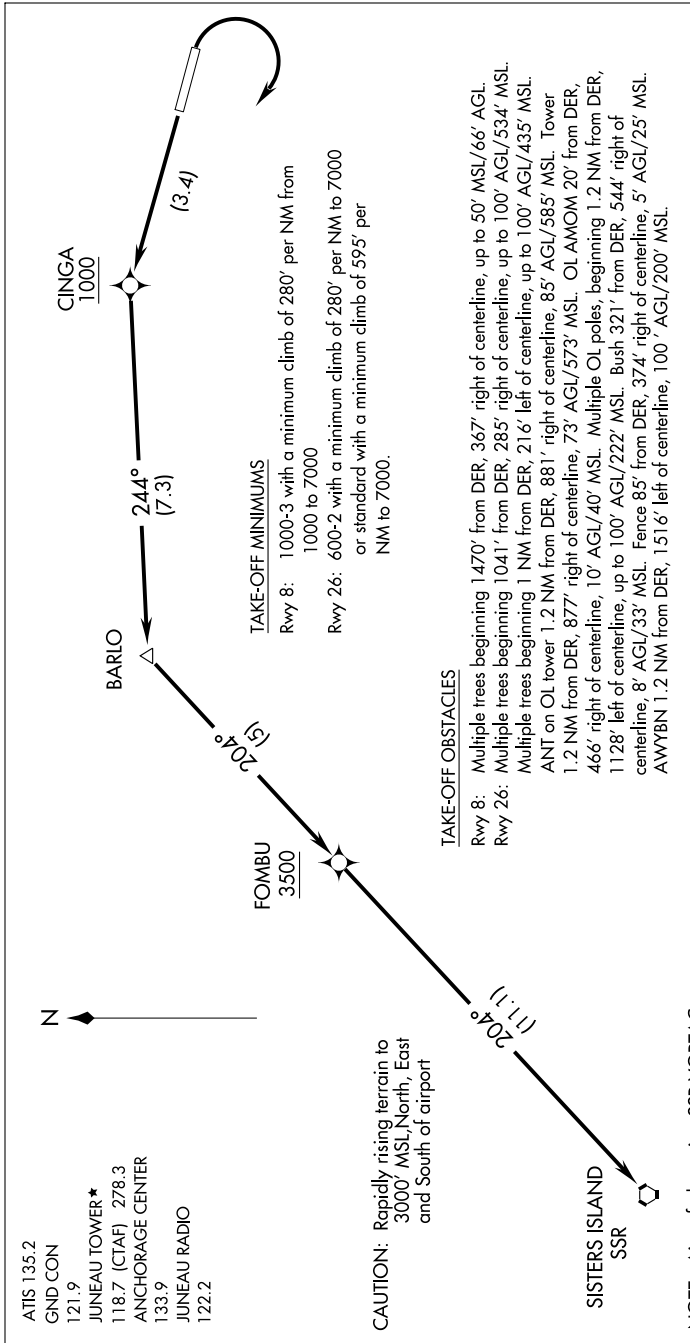


CINGA THREE DEPARTURE (RNAV) (OBSTACLE)

AK, 22 OCT 2009 to 17 DEC 2009



TAKE-OFF MINIMUMS

Rwy 8: 1000-3 with a minimum climb of 280' per NM from 1000 to 7000

Rwy 26: 600-2 with a minimum climb of 280' per NM to 7000 or standard with a minimum climb of 595' per NM to 7000.

TAKE-OFF OBSTACLES

Rwy 8: Multiple trees beginning 1470' from DER, 367' right of centerline, up to 50' MSL/66' AGL. Multiple trees beginning 1041' from DER, 285' right of centerline, up to 100' AGL/534' MSL.

Rwy 26: Multiple trees beginning 1 NM from DER, 216' left of centerline, up to 100' AGL/435' MSL. Multiple trees beginning 1.2 NM from DER, 881' right of centerline, 85' AGL/585' MSL. Tower ANT on OL tower 1.2 NM from DER, 877' right of centerline, 73' AGL/573' MSL. OL ANOM 20' from DER, 466' right of centerline, 10' AGL/40' MSL. Multiple OL poles, beginning 1.2 NM from DER, 1128' left of centerline, up to 100' AGL/222' MSL. Bush 321' from DER, 544' right of centerline, 8' AGL/33' MSL. Fence 85' from DER, 374' right of centerline, 5' AGL/25' MSL. AWYBN 1.2 NM from DER, 1516' left of centerline, 100' AGL/200' MSL.

NOTE: Aircraft departing SSR VORTAC northwest bound on V428 require a minimum climb of 340 feet per NM to 8500.

NOTE: 1. GPS Required
2. RNAV 1

NOTE: Chart not to scale.

DEPARTURE ROUTE DESCRIPTION

TAKE-OFF RWY 8: Turn right as soon as practical. Climb in visual conditions direct CINGA (visual conditions must be maintained from takeoff until established over CINGA at or above 1000 MSL); cross CINGA at or above 1000 MSL, thence

TAKE-OFF RWY 26: Climb direct CINGA, thence

. . . . Then via 244° track to BARLO, then via 204° track to cross FOMBU at or above 3500', then via 204° track to cross SSR VORTAC at or above MEA for direction of flight.

AK, 22 OCT 2009 to 17 DEC 2009