

WESTHAMPTON BEACH, NEW YORK

TACAN RWY 6

WESTHAMPTON BEACH/
FRANCIS S. GABRESKI (KFOK)

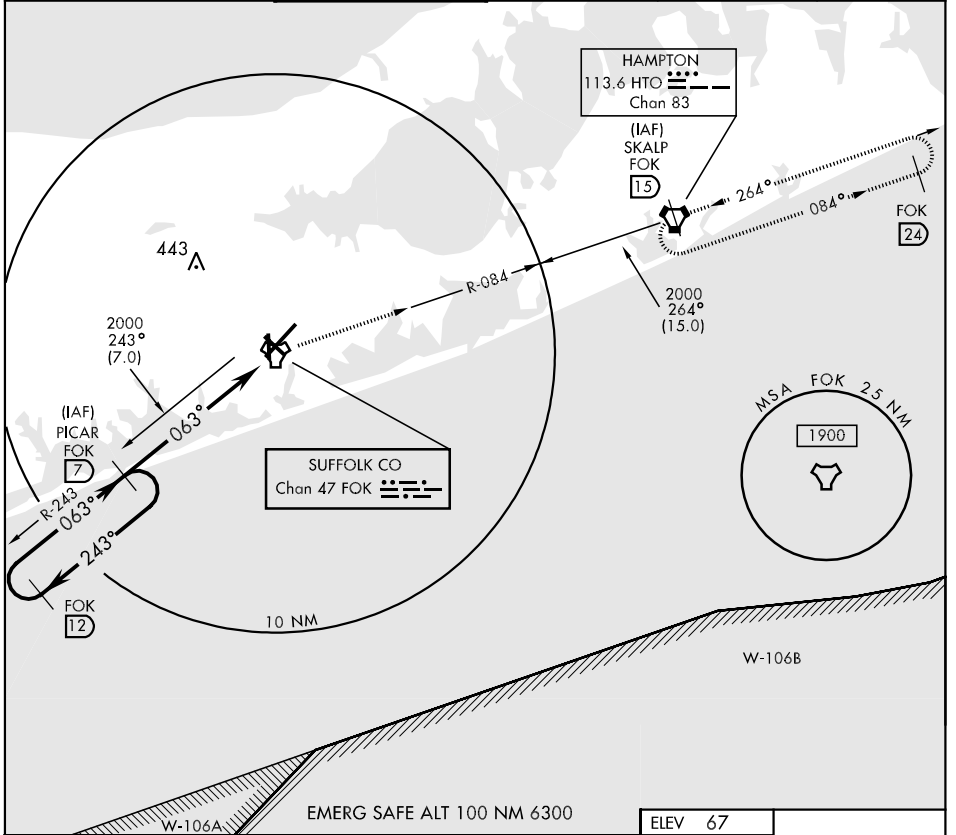
FOK TACAN Chan 47	APCH CRS 063°	Rwy Idg TDZE Arpt Elev 9000 57 67
-----------------------------	-------------------------	---

AL-996 [USAF]

When control zone not effective, procedure not authorized.

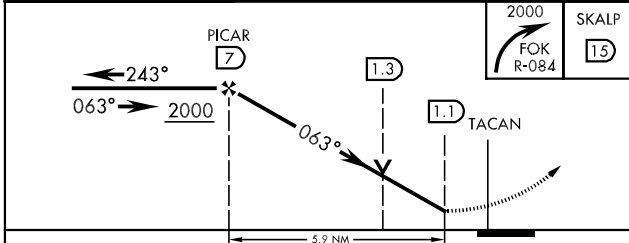
MISSED APPROACH: Climbing right turn to 2000 via FOK TACAN R-084 to FOK 15 DME (SKALP) and hold.

NEW YORK APP CON 125.975 343.65	SUFFOLK CO TOWER ★ 125.3 (CTAF) 0 236.6	GND CON 121.8 225.4	UNICOM 122.95	ASOS 119.925
---	---	-------------------------------	-------------------------	------------------------

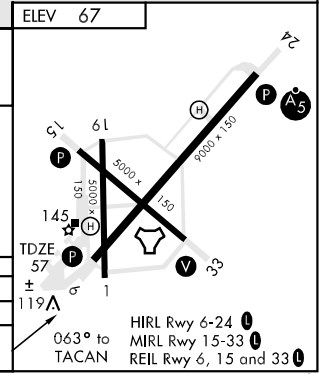


NE-2, 22 OCT 2009 to 19 NOV 2009

NE-2, 22 OCT 2009 to 19 NOV 2009



CATEGORY	A	B	C	D
S-6		380-1	323 (400-1)	
CIRCLING	600-1 533 (600-1)	620-1 553 (600-1)	620-1½ 553 (600-1½)	640-2 573 (600-2)



WESTHAMPTON BEACH, NEW YORK
08325

40° 51' N-72° 38' W

WESTHAMPTON BEACH/
FRANCIS S. GABRESKI (KFOK)
TACAN RWY 6