

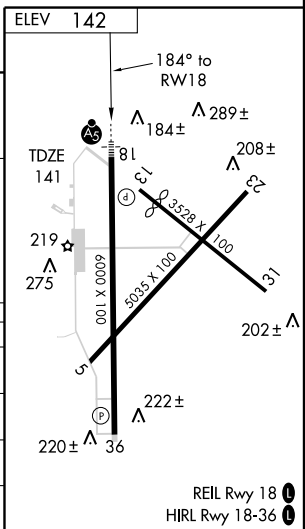
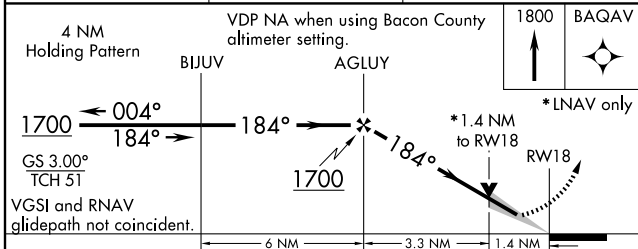
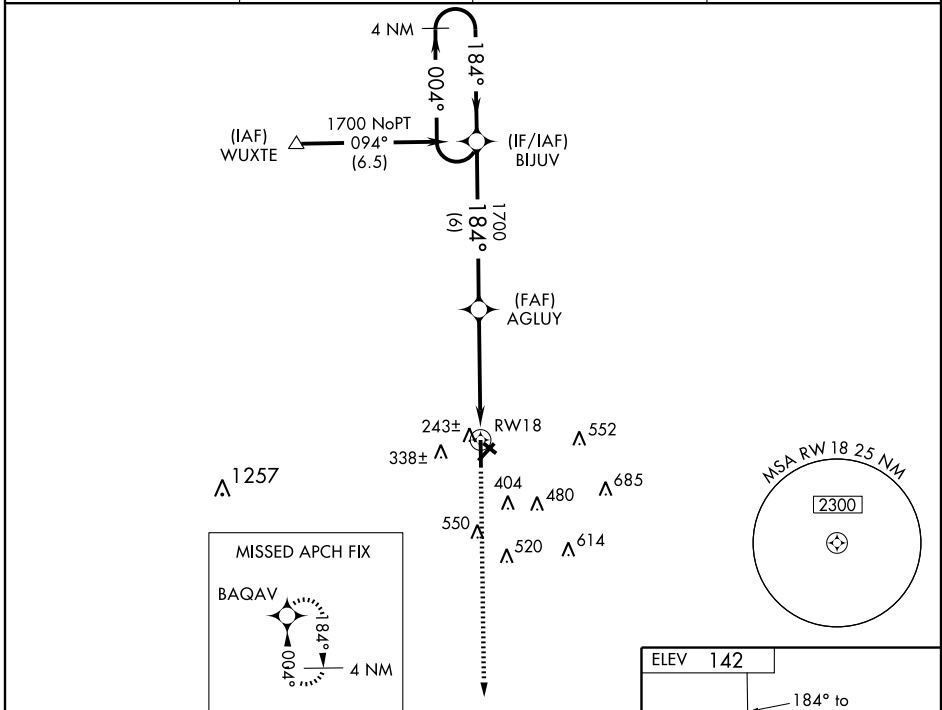
WAAS CH <b>45509</b> <b>W18A</b>	APP CRS <b>184°</b>	Rwy Idg TDZE Apt Elev	<b>6000</b> <b>141</b> <b>142</b>
--	------------------------	-----------------------------	---

# RNAV (GPS) RWY 18

WAYCROSS-WARE COUNTY (AYS)

<p><b>⚠</b> DME/DME RNP-0.3 NA. If local altimeter setting not received, use Bacon County altimeter setting and increase all DAs/MDAs 60 feet.</p> <p><b>⚠</b> For inoperative MALSRS, increase LPV all Cats visibility to 1.</p>	<p>MALSRS</p>	<p>MISSED APPROACH: Climb to 1800 direct BAQAV and hold.</p>
---	---------------	--

AWOS-3 <b>118.575</b>	JACKSONVILLE CENTER <b>132.3 290.4</b>	GCO <b>121.725</b>	UNICOM <b>122.8</b> (CTAF) <b>📻</b>
--------------------------	---	-----------------------	--



CATEGORY	A	B	C	D
LPV DA	400-½ 259 (300-½)			
LNNAV/VNAV DA	NA			
LNNAV MDA	620-½ 479 (500-½)	620-¾ 479 (500-¾)	620-1 479 (500-1)	620-1 479 (500-1)
CIRCLING	680-1 538 (600-1)	700-1 558 (600-1)	700-½ 558 (600-½)	720-2 578 (600-2)

SE-4, 22 OCT 2009 to 19 NOV 2009

SE-4, 22 OCT 2009 to 19 NOV 2009