

RNAV (GPS) RWY 31

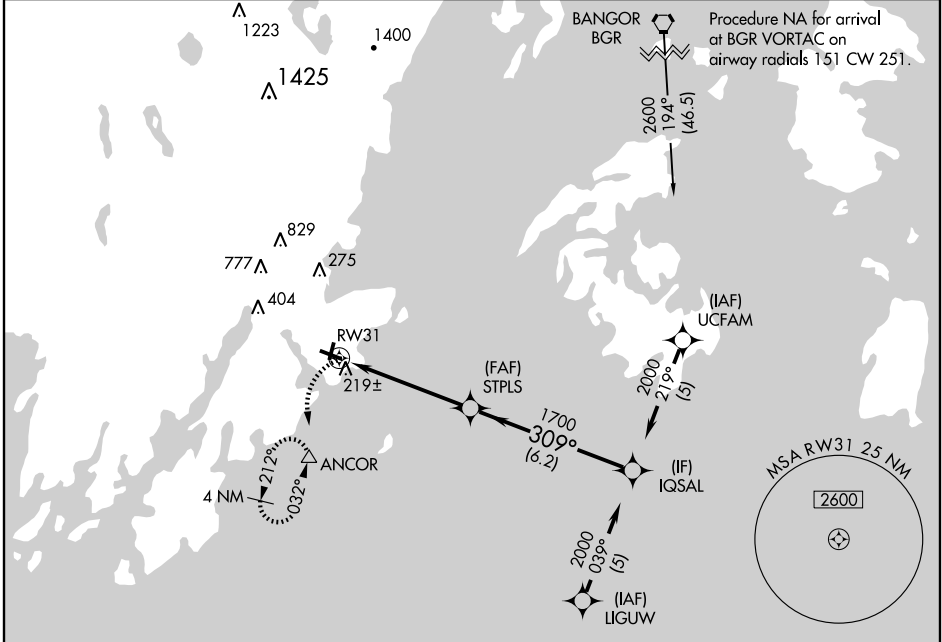
ROCKLAND/ KNOX COUNTY RGNL (R.KD)

APP CRS	Rwy Idg	5007
309°	TDZE	55
	Apt Elev	55

▽ DME/DME RNP-0.3 NA. Visibility reduction by helicopters NA.
▲ When local altimeter setting not received, use Wiscasset altimeter setting and increase all MDA 80 feet, LNAV Cat C and D and circling Cat C visibility ¼ mile.

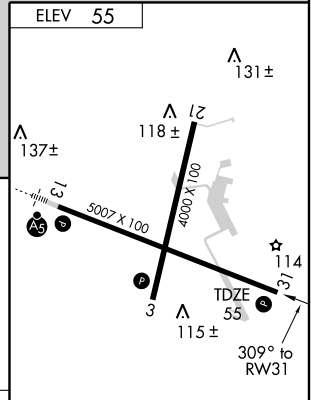
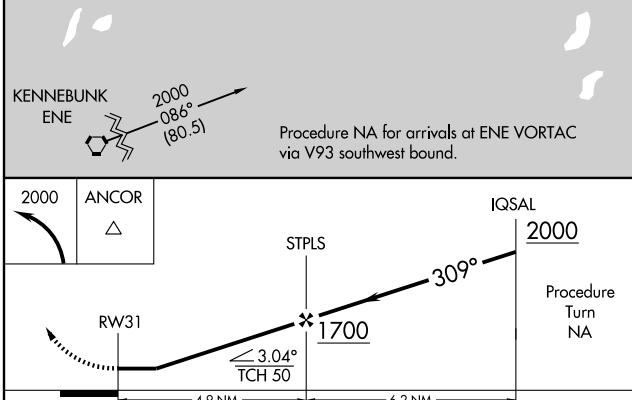
MISSED APPROACH: Climbing left turn to 2000 direct ANCOR and hold, continue climb-in-hold to 2000.

AWOS-3 119.025	BRUNSWICK APP CON * 123.8 263.6	UNICOM 123.05 (CTAF) 📻
--------------------------	---	---



NE-1, 22 OCT 2009 to 19 NOV 2009

NE-1, 22 OCT 2009 to 19 NOV 2009



CATEGORY	A	B	C	D
LNAV MDA	480-1	425 (500-1)	480-1¼	425 (500-1¼)
CIRCLING	600-1	545 (600-1)	600-1½	620-2
			545 (600-1½)	565 (600-2)

REIL Rwy 3 and 31 **📻**
 MIRL Rwy 3-21 **📻**
 HIRL Rwy 13-31 **📻**