

ROCKLAND, MAINE

AL-993 (FAA)

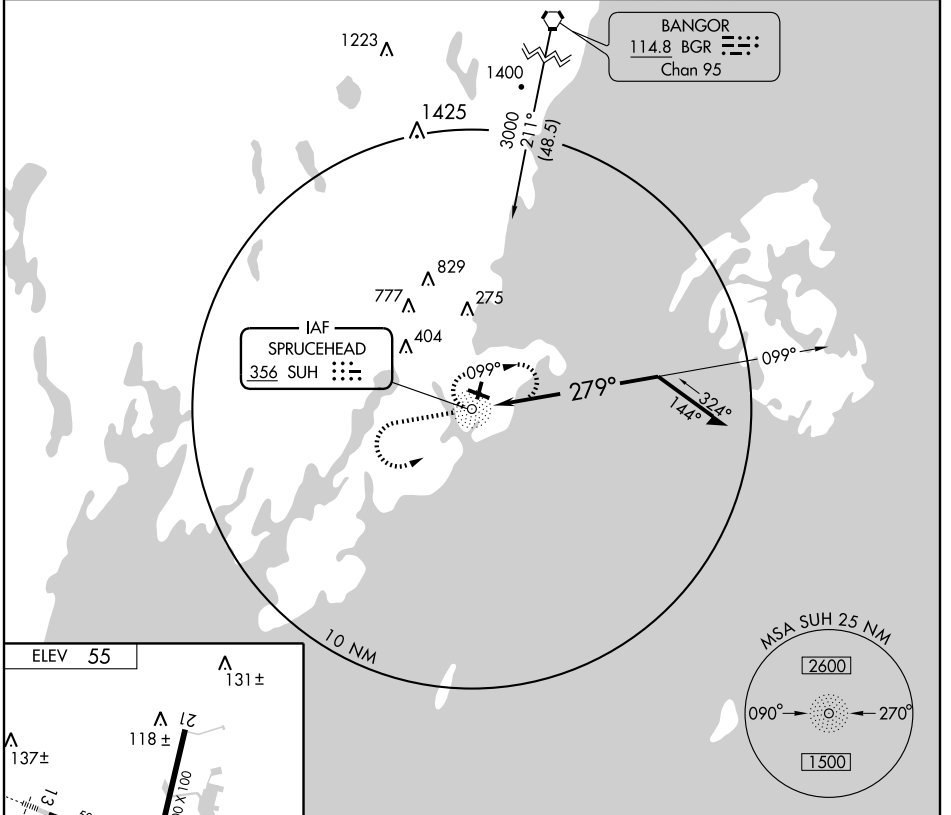
NDB SUH	APP CRS	Rwy Idg	<b>5007</b>
<b>356</b>	<b>279°</b>	TDZE	<b>55</b>
		Apt Elev	<b>55</b>

# NDB RWY 31

ROCKLAND/ KNOX COUNTY RGNL (R.KD)

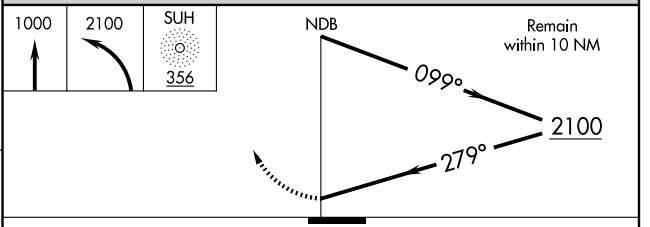
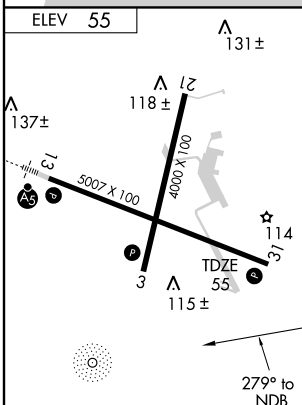
<b>NA</b> Straight-In minimums not authorized at night.	<b>MISSED APPROACH:</b> Climb to 1000 then left climbing turn to 2100 direct SUH NDB and hold.
--	--

AWOS-3 <b>119.025</b>	BRUNSWICK APP CON* <b>123.8 263.6</b>	UNICOM <b>123.05 (CTAF)</b>
--------------------------	--	--------------------------------



NE-1, 22 OCT 2009 to 19 NOV 2009

NE-1, 22 OCT 2009 to 19 NOV 2009



CATEGORY	A	B	C	D
S-31	620-1	565 (600-1)	620-1½ 565 (600-1½)	620-1¾ 565 (600-1¾)
CIRCLING	620-1	565 (600-1)	620-1½ 565 (600-1½)	620-2 565 (600-2)

ROCKLAND, MAINE  
Orig-B 09127

ROCKLAND/ KNOX COUNTY RGNL (R.KD)

44°04'N - 69°06'W

# NDB RWY 31