

ROCKLAND, MAINE

AL-993 (FAA)

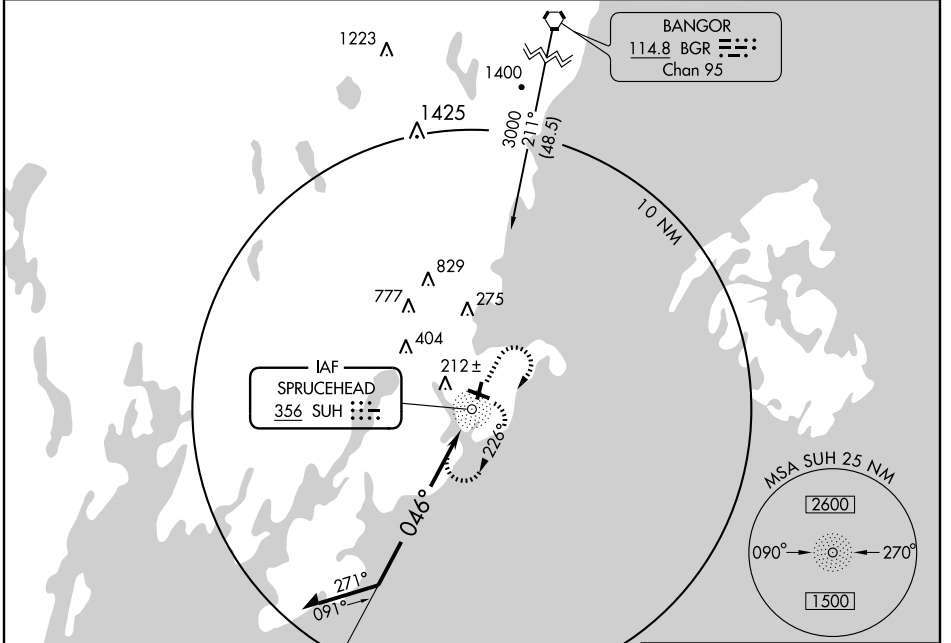
# NDB RWY 3

ROCKLAND/ KNOX COUNTY RGNL (R.KD)

NDB SUH	APP CRS	Rwy Idg	<b>4000</b>
<b>356</b>	<b>046°</b>	TDZE	<b>54</b>
		Apt Elev	<b>55</b>

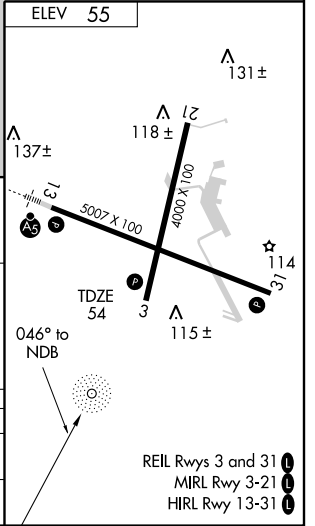
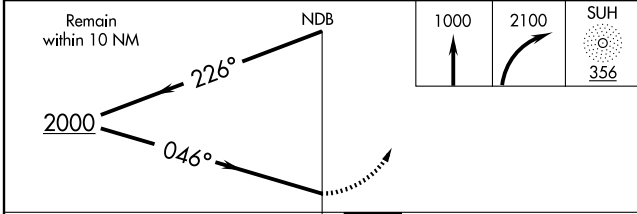
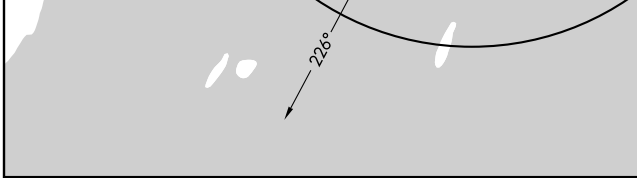
▼ MISSED APPROACH: Climb to 1000, then right climbing turn to 2100 direct SUH NDB and hold.  
▲ NA

AWOS-3 <b>119.025</b>	BRUNSWICK APP CON* <b>123.8 263.6</b>	UNICOM <b>123.05 (CTAF)</b> <span>📻</span>
--------------------------	--	---



NE-1, 22 OCT 2009 to 19 NOV 2009

NE-1, 22 OCT 2009 to 19 NOV 2009



CATEGORY	A	B	C	D
S-3	580-1 526 (600-1)		580-1½ 526 (600-1½)	580-1¾ 526 (600-1¾)
CIRCLING	580-1 525 (600-1)		580-1½ 525 (600-1½)	620-2 565 (600-2)

📻 REIL Rwy 3 and 31  
📻 MIRL Rwy 3-21  
📻 HIRL Rwy 13-31

ROCKLAND, MAINE  
Orig-A 09127

44°04'N - 69°06'W

ROCKLAND/ KNOX COUNTY RGNL (R.KD)  
**NDB RWY 3**