

LOC/DME I-RMZ 111.7 Chan 54	APP CRS 129°	Rwy Idg TDZE 54 Apt Elev 55
------------------------------------------	------------------------	-------------------------------------------------

ILS or LOC RWY 13

ROCKLAND/ KNOX COUNTY RGNL (R.KD)

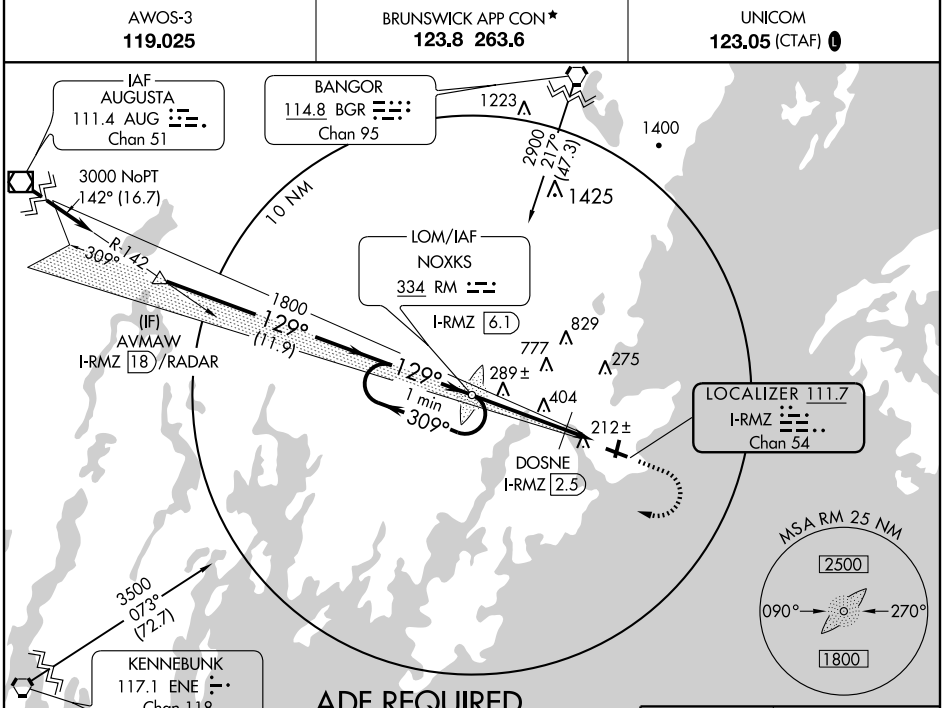
AWOS-3
119.025

BRUNSWICK APP CON*
123.8 263.6

UNICOM
123.05 (CTAF)

MALSR

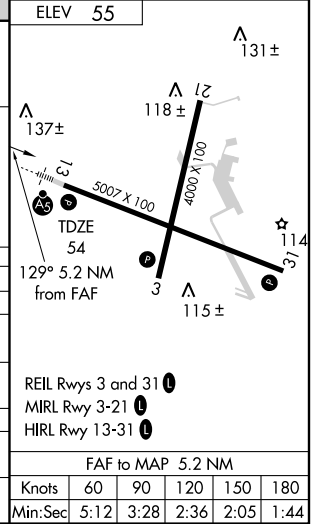
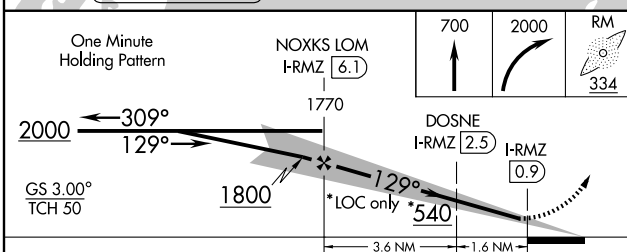
MISSED APPROACH: Climb to 700 then climbing right turn to 2000 direct NOXKS LOM and hold.



NE-1, 22 OCT 2009 to 19 NOV 2009

NE-1, 22 OCT 2009 to 19 NOV 2009

ADF REQUIRED



CATEGORY	A	B	C	D
S-ILS 13		254-½	200 (200-½)	
S-LOC 13	540-½	486 (500-½)	540-¾ 486 (500-¾)	540-1 486 (500-1)
CIRCLING	600-1	545 (600-1)	600-1½ 545 (600-1½)	620-2 565 (600-2)
DME MINIMUMS				
S-LOC 13	440-½ 386 (400-½)		440-¾ 386 (400-¾)	
CIRCLING	600-1	545 (600-1)	600-1½ 545 (600-1½)	620-2 565 (600-2)

REIL Rwy 3 and 31

MIRL Rwy 3-21

HIRL Rwy 13-31

FAF to MAP 5.2 NM

Knots	60	90	120	150	180
Min:Sec	5:12	3:28	2:36	2:05	1:44