



RNAV (GPS) RWY 22

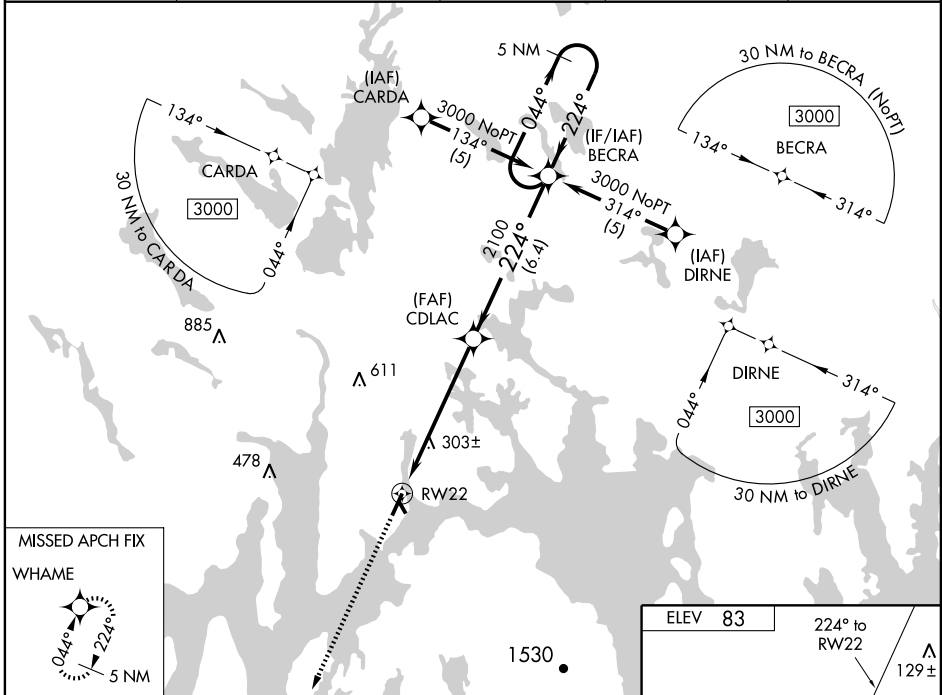
BAR HARBOR / HANCOCK COUNTY-BAR HARBOR (BHB)

WAAS Ch 86305 W22A	APP CRS 224°	Rwy Idg TDZE Apt Elev	5200 83 83
--	------------------------	-----------------------------	---------------------------------------

⚠ WAAS VNAV NA. If local altimeter setting not received, use Bangor altimeter setting and increase LPV DA to 416, LNAV/VNAV DA to 623, all MDAs 100'. VDP NA when using Bangor altimeter setting. Baro-VNAV NA when using Bangor altimeter setting. For uncompensated Baro-VNAV systems, procedure NA below -15°C (5°F) or above 49°C (120°F). Inoperative table does not apply to LNAV Cat C. DME/DME RNP-0.3 NA.

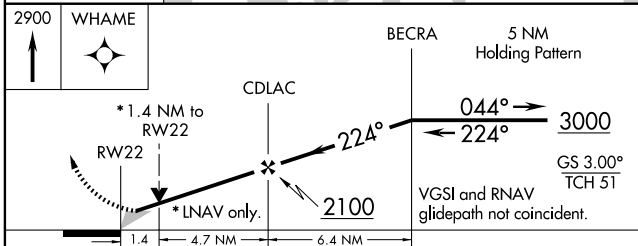
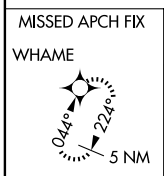
MALS  **MISSED APPROACH:** Climb to 2900 direct WHAME and hold.

AWOS-3 118.025	BANGOR APP CON 124.5 251.125	CLNC DEL 119.9	UNICOM 123.0 (CTAF)	122.7 
--------------------------	--	--------------------------	-------------------------------	--



NE-1, 22 OCT 2009 to 19 NOV 2009

NE-1, 22 OCT 2009 to 19 NOV 2009



CATEGORY	A	B	C	D
LPV DA	333-1 250 (300-1)			
LNAV/VNAV DA	472-1½ 389 (400-1½)			
LNAV MDA	580-¾ 497 (500-¾)	580-1¼ 497 (500-1¼)	580-1½ 497 (500-1½)	580-1½ 497 (500-1½)
CIRCLING	600-1 517 (600-1)	620-1 537 (600-1)	620-1½ 537 (600-1½)	640-2 557 (600-2)

