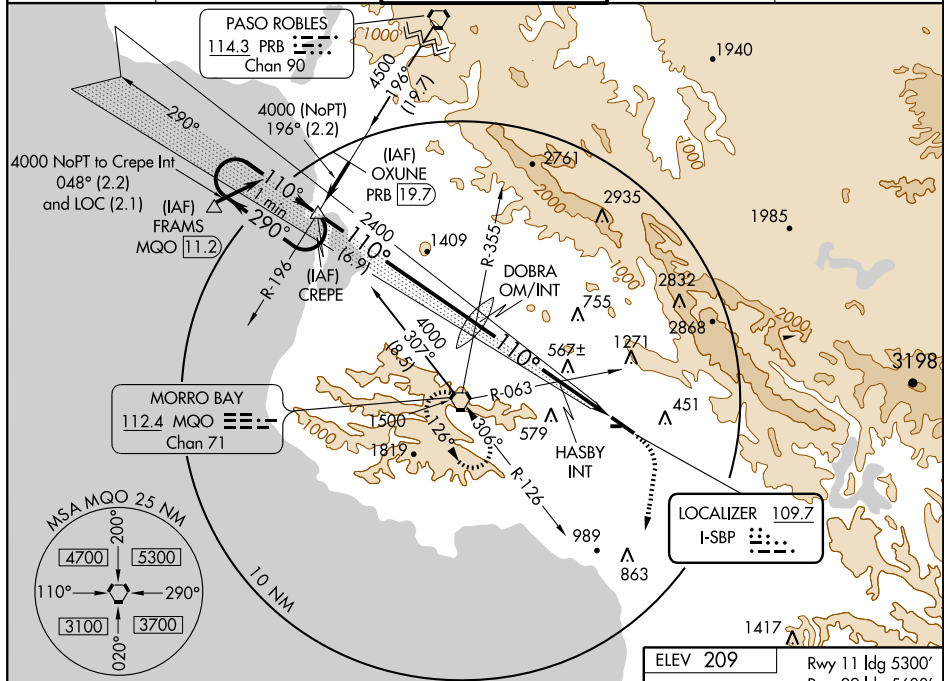


LOC I-SBP 109.7	APP CRS 110°	Rwy ldg TDZE Apt Elev	5300 195 209
---------------------------	------------------------	-----------------------------	---

ILS RWY 11
SAN LUIS COUNTY RGNL (SBP)

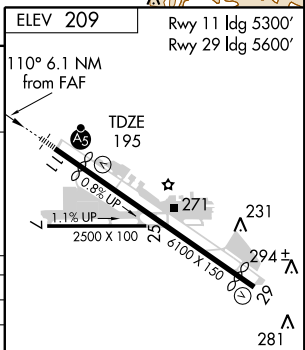
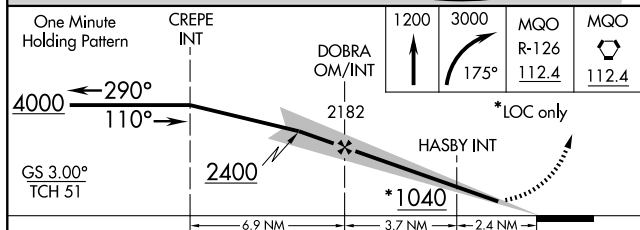
<p>▼ Circling NA north of Rwy 11-29.</p> <p>▲</p>	<p>MALSRL</p>	<p>MISSED APPROACH: Climb to 1200, then climbing right turn to 3000 via heading 175° and MQO R-126 to MQO VORTAC and hold.</p>
---	---------------	--

<p>ATIS 120.6</p>	<p>SANTA BARBARA APP CON* 127.725 244.575</p>	<p>SAN LUIS TOWER* 124.0 (CTAF) 0 379.9</p>	<p>GND CON 121.6</p>	<p>UNICOM 122.95</p>
------------------------------	--	--	---------------------------------	---------------------------------



SW-3, 22 OCT 2009 to 19 NOV 2009

SW-3, 22 OCT 2009 to 19 NOV 2009



CATEGORY	A	B	C	D
S-ILS 11	395-½ 200 (200-½)			
S-LOC 11	1040-½ 845 (900-½)	1040-¾ 845 (900-¾)	1040-2 845 (900-2)	1040-2¼ 845 (900-2¼)
CIRCLING	1040-1 831 (900-1)	1040-1¼ 831 (900-1¼)	1120-2¾ 911 (1000-2¾)	1220-3 1011 (1100-3)
HASBY INT MINIMUMS				
S-LOC 11	540-½ 345 (400-½)		540-¾ 345 (400-¾)	
CIRCLING	840-1 631 (700-1)	920-1 711 (800-1)	1120-2¾ 911 (1000-2¾)	1220-3 1011 (1100-3)

HIRL Rwy 11-29 REIL Rwy 29	FAF to MAP 6.1 NM				
Knots	60	90	120	150	180
Min:Sec	6:06	4:04	3:03	2:26	2:02