

WICHITA ONE DEPARTURE

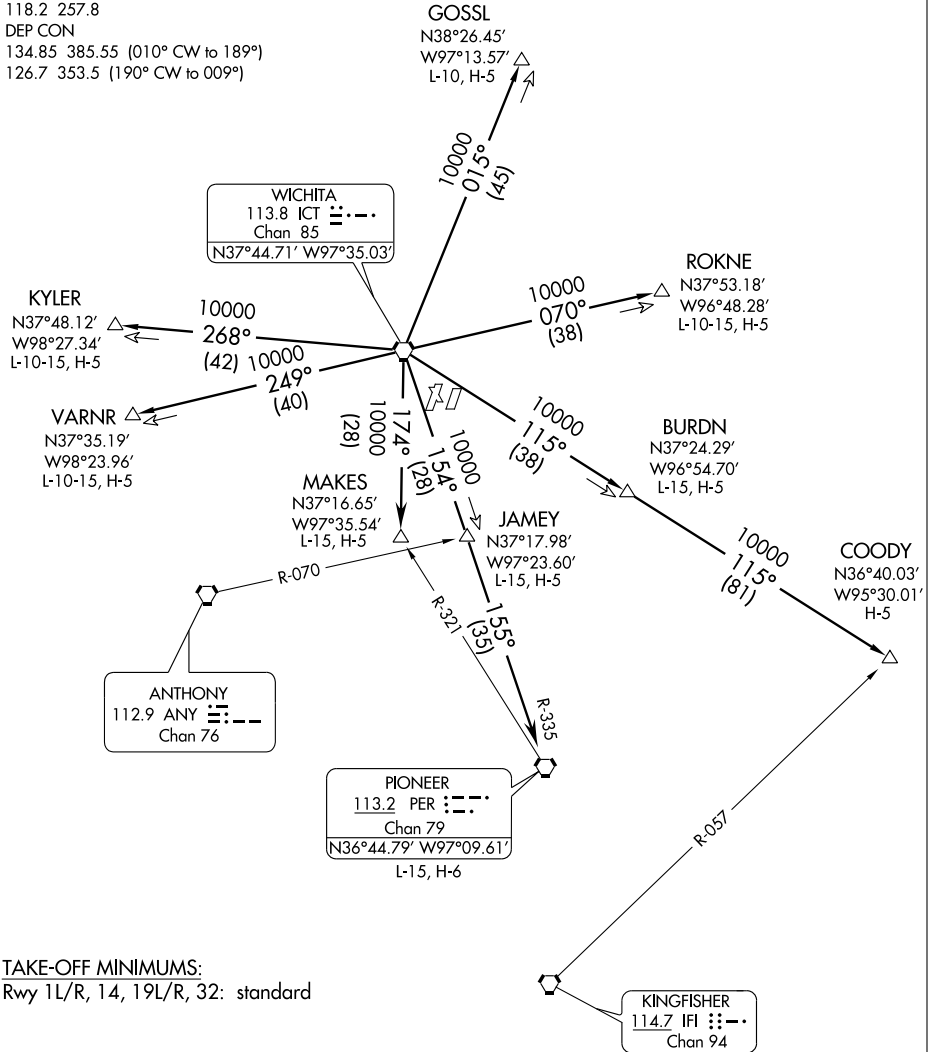
SL-987 (FAA)

WICHITA MID-CONTINENT (ICT)

WICHITA, KANSAS

ATIS 122.15
 CLINC DEL
 125.7
 GND CON
 121.9 348.6
 WICHITA TOWER
 118.2 257.8
 DEP CON
 134.85 385.55 (010° CW to 189°)
 126.7 353.5 (190° CW to 009°)

NOTE: This DP to be used only for aircraft filed 10000 and above



NC-2, 22 OCT 2009 to 19 NOV 2009

NC-2, 22 OCT 2009 to 19 NOV 2009

TAKE-OFF MINIMUMS:
Rwy 1L/R, 14, 19L/R, 32: standard

TAKE-OFF OBSTACLE:
NOTE: Rwy 1L, Tree and poles beginning 1219' from DER, 679' left of centerline, up to 34' AGL/1366' MSL.

NOTE: Chart not to scale.

(NARRATIVE ON FOLLOWING PAGE)

NOTE: Radar required.

WICHITA ONE DEPARTURE