

# RNAV (GPS) Z RWY 1L

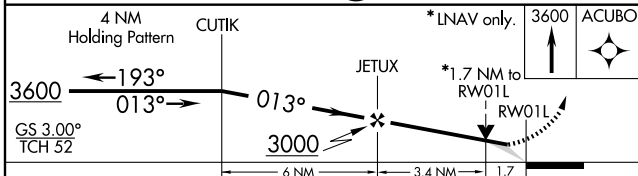
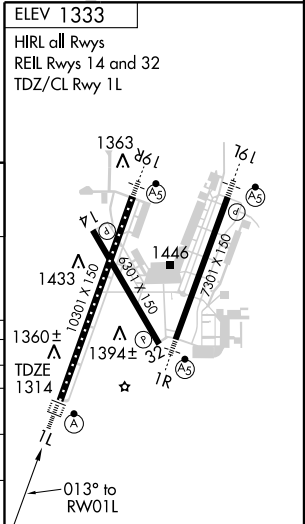
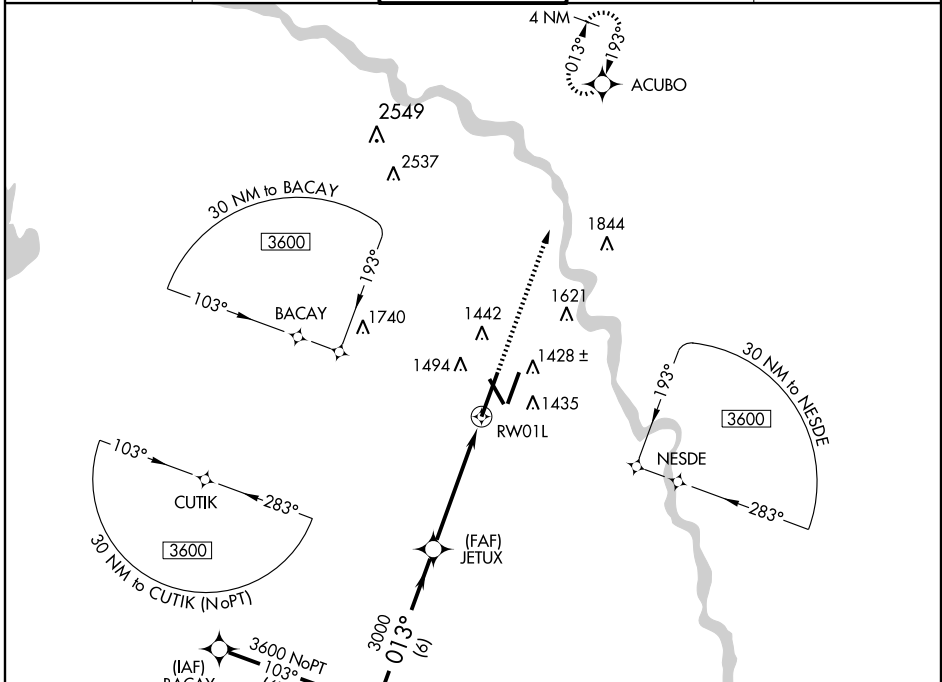
WICHITA MID-CONTINENT (ICT)

APP CRS	Rwy Idg	<b>10301</b>
<b>013°</b>	TDZE	<b>1314</b>
	Apt Elev	<b>1333</b>

**⚠** For uncompensated Baro-VNAV systems, LNAV/VNAV NA below -17°C (2°F) or above 46°C (114°F), DME/DME RNP-0.3 NA. For inoperative ALSF-2 increase LNAV/VNAV Cat Visibility to RVR 5000.

**ALSF-2** **MISSED APPROACH:** Climb to 3600 direct ACUBO and hold.

ATIS <b>125.15</b>	WICHITA APP CON <b>126.7 353.5</b>	WICHITA TOWER <b>118.2 257.8</b>	GND CON <b>121.9 348.6</b>	CLNC DEL <b>125.7</b>
-----------------------	---------------------------------------	-------------------------------------	-------------------------------	--------------------------



CATEGORY	A	B	C	D
GLS PA DA	NA			
LNAV/VNAV DA	1615/24 301 (300-½)			1615/40 301 (300-¾)
LNAV MDA	1920/24 606 (600-½)	1920/60 606 (600-1¼)	1920-1½ 606 (600-1½)	
CIRCLING	1920-1 587 (600-1)	1920-1¾ 587 (600-1¾)	1920-2 587 (600-2)	

NC-2, 22 OCT 2009 to 19 NOV 2009

NC-2, 22 OCT 2009 to 19 NOV 2009