

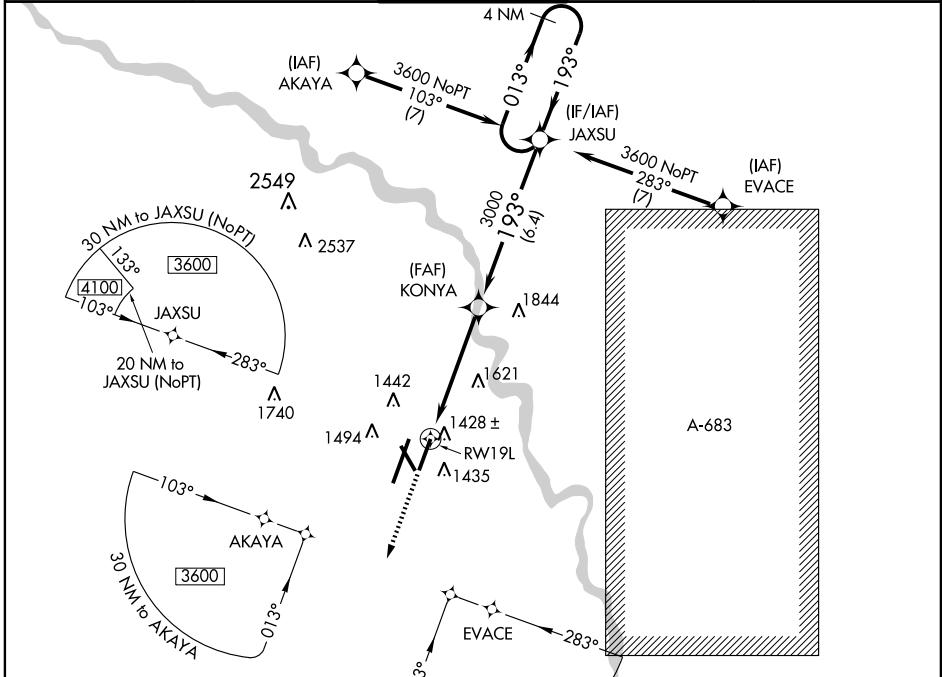
RNAV (GPS) Z RWY 19L

WICHITA MID-CONTINENT (ICT)

APP CRS	Rwy Idg	7301
193°	TDZE	1320
	Apt Elev	1333

NA For uncompensated Baro-VNAV systems, LNAV/VNAV NA below -17°C (2°F) or above 46°C (114°F). DME/DME RNP-0.3 NA.	MALSR	MISSED APPROACH: Climb to 3600 direct FAPAD WP and hold.

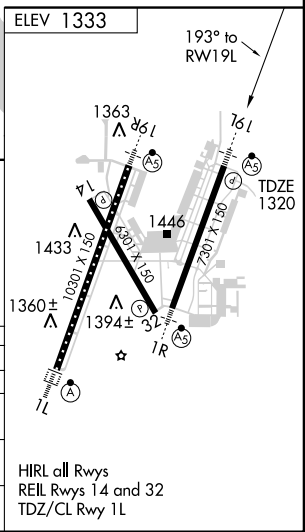
ATIS 125.15	WICHITA APP CON 126.7 353.5	WICHITA TOWER 118.2 257.8	GND CON 121.9 348.6	CLNC DEL 125.7
-----------------------	---------------------------------------	-------------------------------------	-------------------------------	--------------------------



NC-2, 22 OCT 2009 to 19 NOV 2009

NC-2, 22 OCT 2009 to 19 NOV 2009

3600	FAPAD	4 NM Holding Pattern		
		JAXSU	3600	
*1.6 NM to RWY 19L		* LNAV only.		
RWY 19L		GS 3.00° TCH 55		
1.6		3.4 NM	6.4 NM	
CATEGORY	A	B	C	D
GLS PA DA	NA			
LNAV/ VNAV	1740-1 420 (500-1)			
LNAV MDA	1880-1½ 560 (600-½)		1880-1 560 (600-1)	1880-1¼ 560 (600-1¼)
CIRCLING	1880-1½ 547 (600-1½)		1900-2 567 (600-2)	



HIRL all Rwy's
REIL Rwy's 14 and 32
TDZ/CL Rwy 1L