

WICHITA, KANSAS

AL-987 (FAA)

# ILS or LOC RWY 1R

WICHITA MID-CONTINENT (ICT)

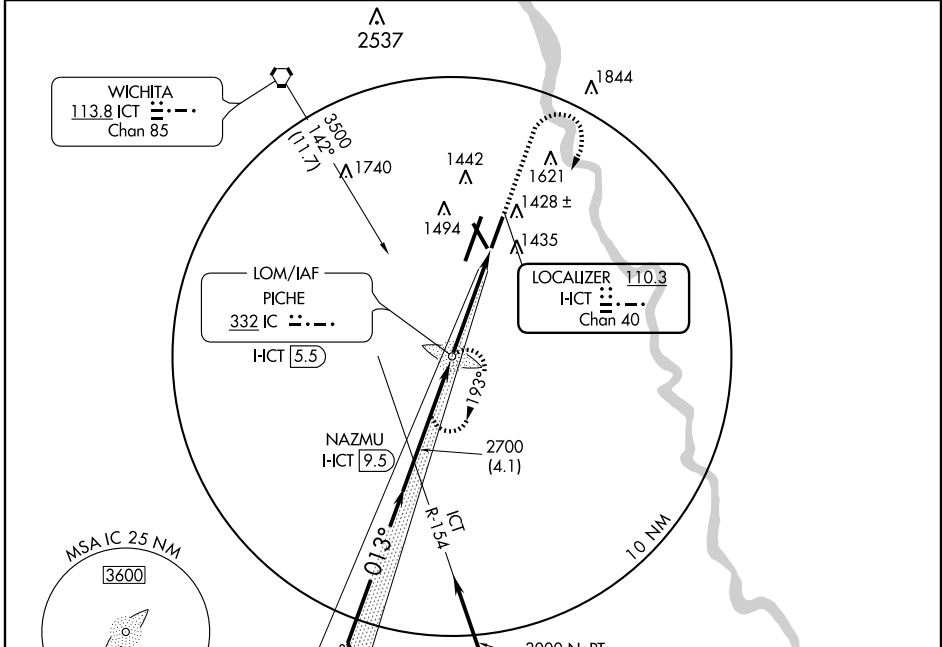
LOC I-CT <b>110.3</b> Chan 40	APP CRS <b>013°</b>	Rwy Idg TDZE Apt Elev	<b>7301</b> <b>1321</b> <b>1333</b>
-------------------------------------	------------------------	-----------------------------	---

**▽** \*VIS Cat A/B/C/D RVR 1800 authorized with the use of FD or AP or HUD to DA.

**▲** MALSR

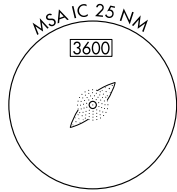
MISSED APPROACH: Climb to 3600 then right turn direct PICHE LOM and hold.

ATIS <b>125.15</b>	WICHITA APP CON <b>126.7 353.5</b>	WICHITA TOWER <b>118.2 257.8</b>	GND CON <b>121.9 348.6</b>	CLNC DEL <b>125.7</b>
-----------------------	---------------------------------------	-------------------------------------	-------------------------------	--------------------------



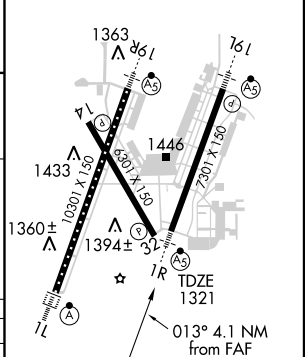
NC-2, 22 OCT 2009 to 19 NOV 2009

NC-2, 22 OCT 2009 to 19 NOV 2009

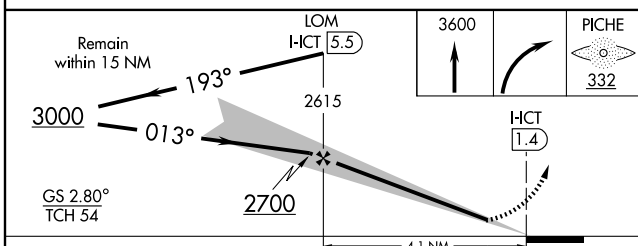


ELEV 1333

HIRL all Rwys  
REIL Rwys 14 and 32  
TDZ/CL Rwy 1L



## ADF or DME REQUIRED



CATEGORY	A	B	C	D	E
S-ILS 1R	*1521/24 200 (200-½)				
S-LOC 1R	1680/24	359 (400-½)	1680/40 359 (400-1)		
CIRCLING	1800-1	467 (500-1)	1800-1½ 467 (500-1½)	1900-2 567 (600-2)	1980-2¼ 647 (700-2¼)

	Knots	60	90	120	150	180
Min:Sec	4:06	2:44	2:03	1:38	1:22	

WICHITA, KANSAS  
Amdt 17A 08325

37° 39' N-97° 26' W

# WICHITA MID-CONTINENT (ICT)

## ILS or LOC RWY 1R