

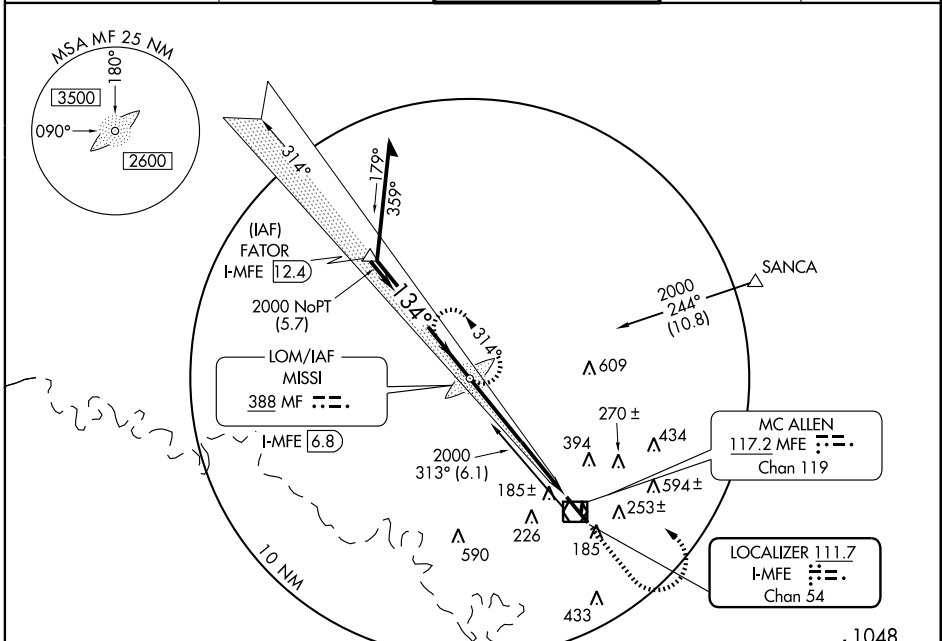
LOC I-MFE <b>111.7</b> Chan <b>54</b>	APP CRS <b>134°</b>	Rwy Idg TDZE <b>107</b> Apt Elev <b>107</b>	<b>6983</b>
---	------------------------	---	-------------

# ILS or LOC RWY 13

MC ALLEN MILLER INTL (MF'E)

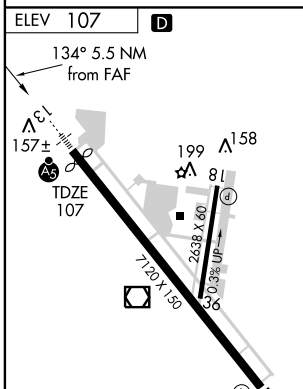
<p>Circling not authorized Northeast of Rwy 13-31. ADF required.</p>	<p>MALS R</p>	<p>MISSED APPROACH: Climb to 1500 then dimbing left turn to 2000 direct to MISSI LOM and hold.</p>
--	---------------	--

ATIS <b>128.5</b>	VALLEY APP CON <b>121.0 377.2</b>	MC ALLEN TOWER* <b>118.5 (CTAF) 256.9</b>	GND CON <b>121.8</b>	UNICOM <b>122.95</b>
----------------------	--------------------------------------	--	-------------------------	-------------------------



SC-3, 22 OCT 2009 to 19 NOV 2009

SC-3, 22 OCT 2009 to 19 NOV 2009

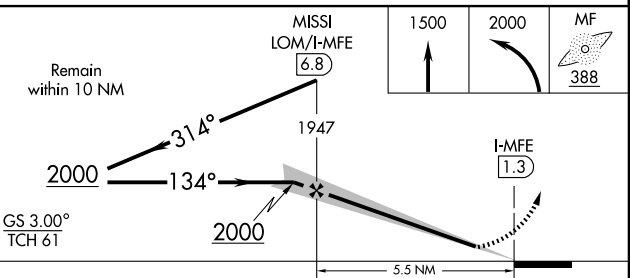


REIL Rwy 31  
HIRL Rwy 13-31  
MIRL Rwy 18-36

FAF to MAP 5.5 NM

Knots	60	90	120	150	180
Min:Sec	5:30	3:40	2:45	2:12	1:50

## ADF REQUIRED



CATEGORY	A	B	C	D
S-ILS 13	307-½ 200 (200-½)			
S-LOC 13	540-½	433 (500-½)	540-¾ 433 (500-¾)	540-1 433 (500-1)
CIRCLING	580-1	473 (500-1)	580-1½ 473 (500-1½)	660-2 553 (600-2)